



Leesville Lake 2022 Water Quality Monitoring

Prepared for:
Leesville Lake Association

Prepared by:
Dr. Thomas Shahady University of Lynchburg

February 2023

Funds Supplied by: American Electric Power & Leesville
Lake Association

Table of Contents

Page

List of Tables.....	4
List of Figures.....	5
List of Acronyms.....	7
Executive Summary.....	10
Section 1: Current Conditions	12
1.1 General	
1.2 Methods	
1.3 Water Quality: Current Test Results	
1.3.1 Temporal Analysis by Station	
1.3.1.1 Dam (Lacustrine)	
1.3.1.2 Leesville Lake Marina	
1.3.1.3 Tri County Marina	
1.3.1.4 Mile Marker 6 (Transition)	
1.3.1.5 Mile Marker 9	
1.3.1.6 Toler Bridge (Riverine)	
1.3.1.7 Pigg River	
1.3.1.8 Smith Mountain Lake Tail waters	
Section 2: Lake Wide Trends.....	49
2.1 Analysis of Trophic State	
2.2 Predictive Models	
2.3 Oxygen Loss in LVL and SML	
Section 3: Conclusion and Management Implications.....	58
References	
Appendix A: Background of Water Quality Program	
Appendix B: Water Parameter Testing Details	
Appendix C: Quality Assurance (QA)/ Quality Control (QC)	
Appendix D: Quality Assurance (QA)/ Quality Control (QC) Checklist	
Appendix E: Measures Over Study Period (2020)	
Appendix F: Letter to Technical Review Committee dated Dec 3, 2020 over concerns of low Dissolved Oxygen Content in tail water release from SML.	

ID	Table Description	Page
1.0	Table of Leesville Lake Sampling Sites	12
1.1	Dam (Lacustrine) Conductivity (ms/cm) measures over study period	Appendix D
1.2	Dam (Lacustrine) Dissolved Oxygen (mg/L) measures over study period	Appendix D
1.3	Dam (Lacustrine) Temperature (°C) measures over study period	Appendix D
1.4	Dam (Lacustrine) Chlorophyll a (ppb) concentrations over study period	Appendix D
1.5	Dam (Lacustrine) pH measures over study period	Appendix D
1.6	Dam (Lacustrine) ORP (mV) measures over study period	Appendix D
1.7	Dam (Lacustrine) Turbidity (NTU) measures over study period	Appendix D
1.8	Dam (Lacustrine) Other Parameters Over Study Period	26
1.10	Leesville Lake Marina other parameters measured over study period	27
1.11	Tri County Marina other parameters measured over study period	27
1.12	Mile Marker 6 (Transition) Conductivity (ms/cm) measures over study period	Appendix D
1.13	Mile Marker 6 (Transition) Dissolved Oxygen (mg/L) measures over study period	Appendix D
1.14	Mile Marker 6 (Transition) Temperature (°C) measures over study period	Appendix D
1.15	Mile Marker 6 (Transition) Chlorophyll a (ppb) concentrations over study period	Appendix D
1.16	Mile Marker 6 (Transition) pH measures over study period	Appendix D
1.17	Mile Marker 6 (Transition) ORP (mV) measures over study period	Appendix D
1.18	Mile Marker 6 (Transition) Turbidity (NTU) measures over study period	Appendix D
1.19	Mile Marker 6 (Transition) Other Parameters Over Study Period	36
1.21	Mile Marker 9 other parameters measured over study period	37
1.22	Toler Bridge (Riverine) Conductivity (ms/cm) measures over study period	Appendix D
1.23	Toler Bridge (Riverine) Dissolved Oxygen (mg/L) measures over study period	Appendix D
1.24	Toler Bridge (Riverine) Temperature (°C) measures over study period	Appendix D

1.25	Toler Bridge (Riverine) Chlorophyll a (ppb) concentrations over study period	Appendix D
1.26	Toler Bridge (Riverine) pH measures over study period	Appendix D
1.27	Toler Bridge (Riverine) ORP (mV) measures over study period	Appendix D
1.28	Toler Bridge (Riverine) ORP (mV) measures over study period	Appendix D
1.29	Toler Bridge (Riverine) Other Parameters Over Study Period	46
1.31	Pigg River other parameters measured over study period.	47
1.32	Smith Mountain Lake Tail Waters other parameters measured over study period	48
2.1.1	Measures of water quality for lake from around the world. Leesville Lake water quality is quite good based on this scale.	56
2.2.1	Correlation matrix for parameters related to water quality at LVL Dam.	57
2.2.2	Correlation matrix for parameters related to water quality at SML Tail waters	57

ID	Figure Description	Page
1.0	Map of Leesville Lake showing locations of sampling stations along the reservoir.	13
1.1	Dam (Lacustrine) Conductivity (ms/cm) measures over study period	18
1.2	Dam (Lacustrine) Dissolved Oxygen (mg/L) measures over study period	19
1.3	Dam (Lacustrine) Temperature (°C) measures over study period	20
1.4	Dam (Lacustrine) Chlorophyll a (ppb) concentrations over study period	21
1.5	Dam (Lacustrine) pH measures over study period	23
1.6	Dam (Lacustrine) ORP (mV) measures over study period	24
1.7	Dam (Lacustrine) Turbidity (NTU) measures over study period	25
1.8	Mile Marker 6 (Transition) Conductivity (ms/cm) measures over study period	29
1.9	Mile Marker 6 (Transition) Dissolved Oxygen (mg/L) measures over study period	30
1.10	Mile Marker 6 (Transition) Temperature (°C) measures over study period	31
1.11	Mile Marker 6 (Transition) Chlorophyll a (ppb) concentrations over study period	32
1.12	Mile Marker 6 (Transition) pH measures over study period	33
1.13	Mile Marker 6 (Transition) ORP (mV) measures over study period	34

1.14	Mile Marker 6 (Transition) Turbidity (NTU) measures over study period	36
1.15	Toler Bridge (Riverine) Conductivity (ms/cm) measures over study period	40
1.16	Toler Bridge (Riverine) Dissolved Oxygen (mg/L) measures over study period	41
1.17	Toler Bridge (Riverine) Temperature (°C) measures over study period	42
1.18	Toler Bridge (Riverine) Chlorophyll a (ppb) concentrations over study period	43
1.19	Toler Bridge (Riverine) pH measures over study period	44
1.20	Toler Bridge (Riverine) ORP (mV) measures over study period	45
1.21	Toler Bridge (Riverine) Turbidity (NTU) measures over study period	46
2.1	Trophic State Index (TSI) based upon Secchi disk measurements.	52
2.2	Same as Figure 2.1 but TSI is based on Total Phosphorus (TP)	53
2.3	Same as Figure 2.1 but TSI is based on Chlorophyll a.	54
2.4	Same as Figure 2.1 but TSI presented is the average of TSI for all parameters evaluated	55
2.5	Average <i>Daphnia</i> concentrations in Leesville Lake	53
2.6	Regression of total Chlorophyll biomass to April conductivity in the reservoir.	55
2.7	Regression of total Chlorophyll biomass to April total phosphorus (TP) concentration in the reservoir.	59
2.8		56

List of Acronyms and Abbreviations

AEP	American Electric Power
DCR	Virginia Department of Conservation & Recreation
DEQ	Virginia Department of Environmental Quality
DO	Dissolved Oxygen
EIS	Environmental Impact Statement
EPA	United States Environmental Protection Agency
FERC	Federal Energy Regulatory Commission
FPA	Federal Power Act
LLA	Leesville Lake Association
mV	Millivolts
MPN	Most Probable Number
NTU	Nephelometric Turbidity Unit
ORP	Oxygen Reduction Potential
TP	Total Phosphorus
SML	Smith Mountain Lake
SMP	Shoreline Management Plan
TMDL	Total Maximum Daily Load
TP	Total Phosphorus
TSI	Trophic State Index
TSS	Total Suspended Solids
VDEQ	Virginia Department of Environmental Quality

Jargon is used in this report to describe certain aspects of lake function and water concerns in the lake. Here we define key terms to facilitate comprehension of the document and the trends that the research reveals.

Lake or Reservoir – These terms, while not technically synonymous, are used interchangeably and in accordance with lay usage. The term reservoir is reserved for a river system with a dam to create a lake. In the southeastern United States, all of these bodies of water are reservoirs with a few notable exceptions. Lakes are the natural bodies of water typically formed through glacial processes (great lakes) or other geological phenomenon (Mountain Lake Virginia). Reservoirs are always deepest at the dam while lakes are deepest in the center.

Riverine and Lacustrine – These are terms we used to describe reservoirs. Riverine describes conditions that are dominated by river conditions and often occur in the upper portions of a reservoir. Lacustrine is a term used to describe conditions dominated by lake processes and often occur near the dam. The term **transition** is used often throughout the center of the reservoir to describe a blend between riverine and lacustrine.

Pelagic and Littoral – This is a term used to describe the deepest part of the reservoir. It is more often used to describe the open water of a lake. Littoral is the term used to describe the shallow portion of a lake and is often an area covered by floating or rooted plants. These terms are not as often associated with reservoirs because water movement prevents development of significant littoral zones.

Eutrophic – This is the condition of lakes and other bodies of water resulting from the input of excess nutrients. As this condition worsens it leads to algae blooms, formation of toxic algae growth, high pH, low dissolved oxygen and poor water quality. All of these conditions are harmful to beneficial aquatic life and enjoyment of the reservoir.

Trophic State – this is a convenient method to translate measured conditions of eutrophication into a scale. We consider lakes and reservoirs to be eutrophic (high levels of eutrophication), mesotrophic (moderate levels of eutrophication) or oligotrophic (low levels of eutrophication). Often these levels must be balanced as oligotrophic conditions are not good for fishery productivity and eutrophic conditions lead to severe water quality problems. One additional classification is **Dystrophic**, which is characterized by high levels of tannins in the water. Tannins are created when leaf litter degrades. Dystrophic water is often tea colored and found more often in coastal systems.

Polymictic – a term used to describe lakes that turn over multiple times in a year. Turn over reflects the condition where the lake is the same temperature from top to bottom, allowing the water to mix. Many lakes in temperate climates such as Leesville Lake stratify during summer months characterized by warm water floating on top of colder water. During this period of “stratification,” the warm water is isolated from the lower cooler water. When the lake is stratified it only mixes in the upper layer. When the lake

warms or cools to the same temperature it mixes throughout. If this only occurs in the spring and the fall a lake is considered dimictic – or mixing only twice in a year. Leesville Lake is considered polymictic because in addition to the spring and fall stratification heavy rain input and water movement by Smith Mountain Lake will break up the stratification. After these events, stratification occurs. This causes the lake to mix many times in a year hence the term polymictic.

Hypolimnion and Epilimnion – These are terms used by limnologists (a person who studies lakes) to describe the layers that form during stratification. The epilimnion is the upper layer and the hypolimnion is the lower layer. The term **Metalimnion** is also used to describe the layer of changing conditions between the two other layers. Temperature is the most common measure used to define these layers, and the most often referenced criterion to define a new layer is a temperature in excess of 1 degree centigrade per one meter of depth. But, because these lakes are polymictic, this clear definition is often not applicable.

Heterogrades – These are terms to describe the shape of oxygen curves throughout the water column. Oxygen is influenced by many factors and the heterograde curves help describe these influences. When phytoplankton accumulate at the thermocline, they tend to photosynthesize creating a visible increase of oxygen in that area. This is called a **positive heterograde**. When oxygen decreases due to bacterial consumption of oxygen with depth without change this is a **clinograde**. Within a clinograde, an increase in oxygen below the thermocline due to the physical characteristics of the water is termed a **positive heterograde**. Oxygen that remains unchanged with depth is an **orthograde**.

Thermocline – Area in the lake defined from a depth profile where water temperature decreases at a rate greater than 1 degree centigrade per meter.

Phytoplankton and Chlorophyll a – These are terms to describe the algae or plant life that occupies the pelagic portion of the reservoir. Phytoplankton are single celled or filamentous microscopic plants that grow in the water and are stimulated by water movement, depth of light penetration and nutrients such as phosphorus and nitrogen. Chlorophyll a is the photosynthetic pigment found in all plants and a very convenient way to measure the amount of phytoplankton in the reservoir. These terms are often used interchangeably.

E. coli – This term is used to describe a group of bacteria that are associated with health risk in water. They are typically not pathogenic but are easy to quantify in the laboratory. Because their presence is associated with presence of pathogens, we measure their concentration and issue warnings when levels are high. Sediment that is brought into reservoir is often associated with high levels of *E. coli*.

Executive Summary

The Leesville Lake Association and University of Lynchburg, in partnership with American Electric Power Company, monitored water quality of Leesville Lake between April and October of 2022. The lake was monitored at the end of each month by The University of Lynchburg while additional samples were collected by the Leesville Lake Water Quality Committee during June, July and August at mid-month. The results of that monitoring are reported here with analysis of lake trends at each station and additional analysis on problems of concern. The intent of this report is to provide a technical and scientific background for sound management of Smith Mountain Lake and Leesville Lake in order to protect and improve these lake resources for future generations.

Leesville Lake continues to meet prescribed water quality parameters measured in the main stem of the reservoir. While concerns are discussed related to changing water quality conditions in the Pigg River and SML tailwater release, trophic state index calculations suggest Leesville Lake is very resilient and stable around a slightly eutrophic condition.

It is important to state that while some water quality indicators are worsening, Leesville Lake appears very resistant to those inputs and has remained in good condition (Figure 2.4). Leesville Lake is maintaining a constant TSI index between 50-60 demonstrating only inter year variations. All indicators in 2022 suggest this condition of the reservoir continues and should continue through the foreseeable future. While it is always the aim of any long-term study such as this to improve the condition of the resource being monitored, considering the problems surrounding the lake this is a good result and possibly an improvement.

Other conclusions based on observations from this years (2022) study and analysis of long-term trends include:

Leesville Lake behaves as a pump storage reservoir with headwaters impacted by tail release from the upper reservoir and this impact is seen throughout the reservoir. Pumping operations have a very strong impact on LVL water quality. The influence of SML tail water throughout the reservoir is generally a positive result as hypolimnion in SML contains water that is very clear and approaching oligotrophic conditions. However, oxygen depletion is very problematic late in the season (Sept-Oct.) and seems to be worsening. Low dissolved oxygen (<5 mg/L) persists in tail water release at the end of the season. These low oxygen conditions can be detected down through the reservoir past the station at Toler Bridge.

This oxygen loss when coupled with the high nutrient input from the Pigg River is cause greater eutrophication in LVL due to phosphorus release. This trend is worsening although not being expressed as Chlorophyll a biomass yet. Time lags are a concern.

Specific management recommendations from this years report:

1. **The two greatest threats to water quality in LVL are the high nutrient inputs from Pigg River and low oxygen levels of SML release late in the season.** These two phenomena work together to compound this problem.
2. Monitoring of the Pigg River by the Leesville Lake Association's Water Quality Committee must continue (see separate report of these findings). This is the only current study in this watershed and water quality of the Pigg River is critical to the health of LVL. This river must be studied and monitored to help make beneficial management decisions for Leesville Lake. Every effort needs to be extended to understand nutrient pollution and control it.
3. Land use and deleterious inputs in all watersheds (Pigg River, Blackwater and Roanoke) need to be addressed. While Pigg River Watershed is of the greatest concern to Leesville Lake, deteriorating water quality in SML is impacting tail release into Leesville Lake and this must be addressed and managed.
4. It is clear from our water monitoring of Leesville Lake and data collected at the tail release that water does not meet permit standards late in the season. The following must be noted and addressed by AEP:
 - a. License requirements associated with the Smith Mountain Hydroelectric Project (Project) require the licensee, Appalachian Power Company (Appalachian), to implement a Water Quality Monitoring Plan (Plan) as part of license Article 405. The order approving the Plan was issued on April 15, 2011.
 - b. Develop and file, in accordance with the requirements of Article 401(a) for Condition F.4 found in Part I of the Virginia Department of Environmental Quality's (Virginia DEQ) water quality certification (WQC), a feasibility study and plan for physical or mechanical alterations of water release procedures, developed in consultation with the Water Quality Technical Review Committee (WQTRC1), to address violations of water quality standards for DO caused by turbine discharge from Smith Mountain Lake, should the operating practices employed prove insufficient at improving DO levels in Smith Mountain's turbine discharge.

Section 1: Current Conditions

1.1 General:

This is the 11th year of water quality monitoring of Leesville Lake by University of Lynchburg (formerly Lynchburg College in previous years of study) in partnership with Leesville Lake Association (LLA). Eleven years of data continue to strengthen our understanding of Leesville Lake's water quality and support our effort to manage this important natural resource. In addition, the Leesville Lake Water Quality Committee in partnership with University of Lynchburg is entering its 5th year of a study throughout the Pigg River Watershed to pinpoint problems and diagnose potential solutions. Understandings from this study will continuously be incorporated into our understanding of lake function and management. Findings from the Pigg River are published separately.

Section 1 documents results for the current year's sampling. Data are reported in graphical form with interpretations. In **Appendix D**, all data are reported in tabular form to facilitate future analysis and use with other projects. This project continues to provide essential baseline data for the condition of the lake and interpretation of changing conditions. A full background of the study and its rationale is located in **Appendix A**.

1.2 Methods:

Data were collected by University of Lynchburg through a series of water samplings and testing monthly from April through October. These dates coincide with the most productive period of the reservoir or when lake productivity is greatest. Leesville Lake Association (LLA) supplements sampling over the three summer months of June, July and August to provide biweekly analysis. LLA collection is not as extensive as the university sampling but adds vital data to understanding trends in the lake. The following eight sites (Table 1.0) continue to be sampled, as stated in the Leesville Lake Water Quality Monitoring Plan:

Table 1.0. Leesville Lake Sampling Sites

LC Station	LLA Station	Site ID	DEQ Station ID	Latitude	Longitude
Leesville Lake Dam	11	2636	LVLAROA140.66	37.0916	-79.4039
Leesville Lake Marina	5	1275	LLAOQC000.58	37.05939	-79.39574
Tri County Marina	3	1273	LLATER000.33	37.05942	-79.44489

Mile Marker 6	8	1373	LLAROA146.87	37.06320	-79.47110
Mile Marker 9	2	1272	LLAROA149.94	37.03993	-79.48233
Toler Bridge	1	1271	LLLAROA153.47	37.01090	-79.47530
Pigg River	9	1374	LLAPGG000.47	37.00430	-79.48590
SML Tail Waters	12	2637	LVLAROA157.92	37.0382	-79.531306

Detailed methodologies used by University of Lynchburg and Leesville Lake Association are located in **Appendix B** for reference. Quality Control and Quality Assurance are located in **Appendix C** for reference.

Site Descriptions

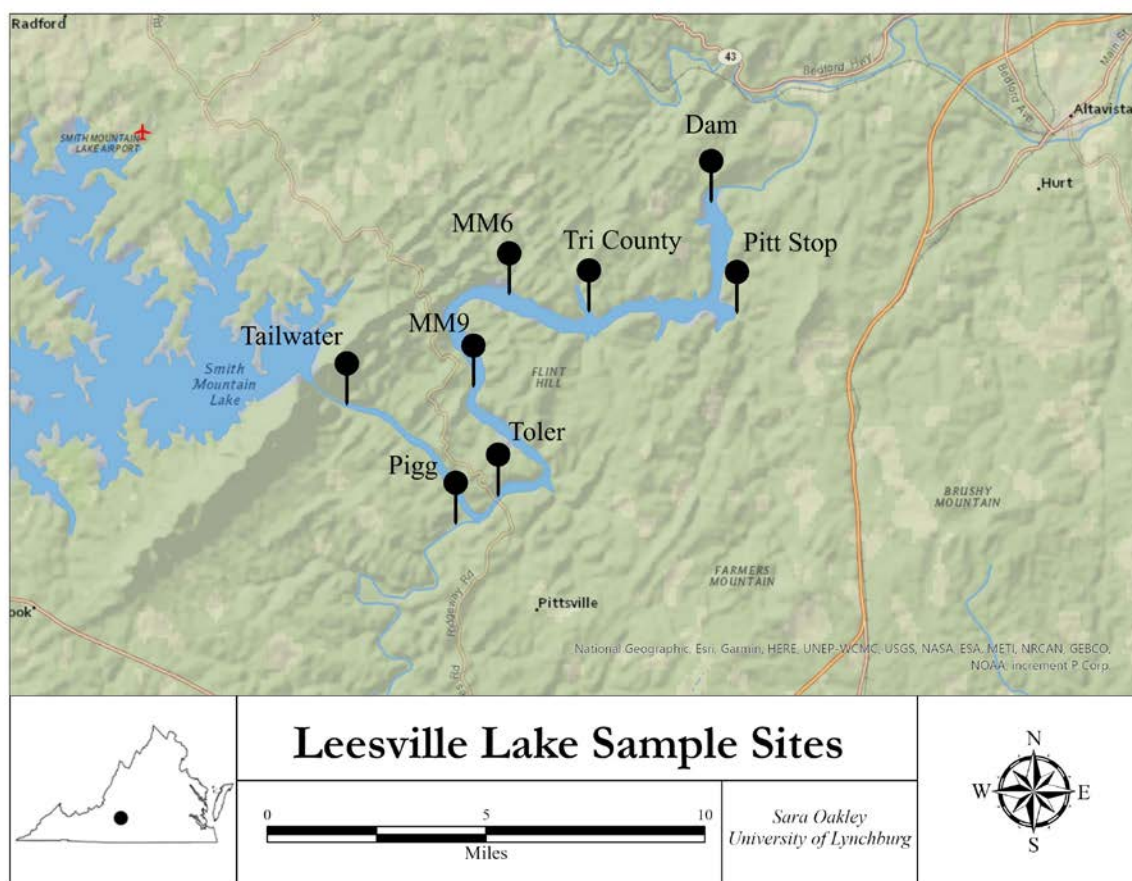


Figure 1.0 – Map of Leesville Lake showing locations of sampling stations along the reservoir.

Old Womans Creek-Leesville Lake Subwatershed

1.3.1.1 Dam

The Dam sampling site is located on the northwest (N 37° 5' 35.215", W 79° 24' 9.809") quadrant of the Old Womans Creek subwatershed (Figure 1). This part of the reservoir is considered as **lacustrine** and its characteristic resembles lake qualities. The water upstream progresses into this station as the season progresses and water characteristics are expected to be isolated from the influence from Smith Mountain Lake Operations.

1.3.1.2 Leesville Lake Marina

The Leesville Lake Marina sampling site is located on the northwest quadrant (N 37° 5' 35.21, W 79° 24' 10.425) of the Old Womans Creek subwatershed (Figure 1). This portion of the reservoir is potentially impacted by Old Womans creek and identified by DEQ as an impacted watershed.

1.3.1.3 Tri County Marina

Tri County Marina sampling site is located further south of the northwest quadrant (N 37° 3' 35.158, W 79° 23' 219) of the Old Womans Creek subwatershed (Figure 1). This part of the reservoir is considered as a **transition zone** between **riverine** and **lacustrine**. Water in this zone is expected to not be as influenced from Smith Mountain Lake Operations, but more so by transition position. This tributary is expected to deposit nutrients and other pollutants, with periods of drawback potentially enhancing impact of effluents spent in the reservoir.

1.3.1.4 Mile Marker 6 (MM6)

MM6 sampling site is located further south of the mid- southeast quadrant (N 37° 3' 46.501, W 79° 26' 48.006") of the Old Womans Creek subwatershed (Figure 1). This part of the reservoir is also considered as a **transition zone**. Positioned further upstream the patterns observed here provide a point to compare and discern trends of that are comprised moving up or down the reservoir.

1.3.1.5 Mile Marker 9(MM9)

MM9 sampling site is located further south of the southeast quadrant (N 37° 4' 5.7325", W 79° 28' 21.015") of the Old Womans Creek subwatershed (Figure 1). This part of the reservoir is considered as a **riverine zone**. Water transported upstream from the Toler Bridge sampling site subject this sampling site to further mixing from influxes of the tail waters of Smith Mountain Lake Dam and Pigg River are expected to be heavy influencers and

expect to reflect degradation of water quality from water transported from Toler Bridge.

1.3.1.6 Toler Bridge

The Toler Bridge sampling site is located south of the southeast quadrant (N 37° 2' 23.3955", W 79° 28' 53.152") of the Old Womans Creek subwatershed (Figure 1). This part of the reservoir is also considered as a **riverine zone**. This sampling site is of interest to study as it is the confluence point of dichotic water qualities from expected poor water conditions quality from Pigg river and the expected good water quality conditions from Smith Mountain Lake. Since the resulting water quality is driven from mechanistic (SML Dam) and stochastic (Pigg River), the qualities here will be challenging to interpret.

1.3.1.7 Pigg River

The Rig River sampling site is located on the furthest southeast aspect (N 37° 0' 17.333", N 37° 0' 17.333) of the Old Womans Creek subwatershed (Figure 1). This area is considered a **riverine zone**. The water quality measures reflected clearly impact water quality in the reservoir. This sampling site here is to reflect the impacted water quality that merges into the reservoir compared to the relatively unimpaired water quality released by the Smith Mountain Lake Tail waters.

Clay Branch-Leesville Lake *Subwatershed*

1.3.1.8 Smith Mountain Lake Tail waters

The Smith Mountain Lake Tail waters sampling site is located further north the southeast aspect of the Clay Branch-Leesville Lake subwatershed (Figure 1). This area is considered as a **riverine zone** as the input patterns are similarly reflective of a river. The water inputs at this location are of very good water quality because of the inputs of nutrient concentration and the settling sediments from the water column. This site is of interest to sample due to the quality demonstrating which areas are of interest for sound management of Smith Mountain Lake and Leesville Lake.

1.3 Leesville Lake Water Quality: Current Test Results

1.3.1 Temporal Analysis by Station

Background

Leesville Lake is a reservoir by definition (a listing of terms used in this report is provided on page 8 for easy reference). It is a river course with a dam constructed and filled to form this reservoir. Leesville Lake is somewhat different than a typical reservoir because it serves as a storage source (pump back operations) for the generation of electricity by the Smith Mountain Lake Hydroelectric Plant. The reservoir receives water input primarily from Smith Mountain Lake but secondarily from several other stream systems with the Pigg River the most significant. This river drains a considerably large watershed with agriculture and urban land disturbance throughout. These inputs and pumping operations in Leesville Lake create a unique hydrology that impacts the water quality of the reservoir.

In any reservoir, water quality is best evaluated along a spatial gradient. This gradient begins in the headwaters of the reservoir where river inputs generate patterns similar to a river. This section, characterized as riverine, is often the area with the highest productivity and nutrient input and the poorest water quality. As water travels further into the reservoir, these riverine conditions begin to lessen and more lake qualities (lacustrine), influence water quality. This middle portion of the reservoir is considered a transition zone as the riverine and lacustrine portions of the reservoir mix. This area may have the highest overall productivity in the reservoir as sediments associated with river flow settle from the water column yet nutrient concentrations are plentiful. The final sections of a reservoir are considered lacustrine and resemble lake qualities. This area often is lower in productivity due to settling of particulates and lower nutrient concentrations. If stratification is continuous, upper layers become very isolated from lower portions of the reservoir further isolating nutrients and other pollutants. The best water quality for the reservoir is located in this section.

Leesville Lake does not necessarily follow this typical pattern. First, the headwaters are fed by release of tail water from Smith Mountain Lake lacustrine zone. This release is of very good quality water because of the aforementioned typical water quality in a reservoir. Thus, one source of incoming water to Leesville Lake is excellent and often mesotrophic or even oligotrophic in quality. However, during later portions of the year the oxygen content of water released from Smith Mountain Lake may have very low oxygen content due to the reservoir properties of stratification that depletes oxygen in the hypolimnion of eutrophic reservoirs. A secondary source of water into Leesville Lake is the Pigg River. This is an impaired river delivering high concentrations of nutrients, sediment and bacteria into Leesville Lake.

Additionally, the headwater region of Leesville Lake is subject to a bidirectional movement of water. This forces water flow from the Pigg River into the Smith Mountain Lake (SML) lacustrine zone. The fate of this mixing depends on hydroelectric operations, amount of water pumped back and time this water remains in the upper reservoir. The impacted area within Leesville Lake is 4 miles from the Pigg River mouth to the SML dam. Then during energy production, Pigg River water mixed with SML lacustrine discharge flows into Leesville Lake headwaters. This pattern is variable and at any time the water in this 4 mile stretch may consist of Pigg River water, SML release or a combination of both. This pattern significantly altered by stormwater.

The transition portion of the reservoir is not as heavily influenced by Smith Mountain Lake Operations. Water is drawn back and forth above this zone but the volume of water buffers the influence these operations exert on water quality. During periods of heavy rain, sediment-laden water does travel into the transition portions of the reservoir. Water in this zone is influenced by Smith Mountain Operations but more so by its position as the transition zone. The dam area of Leesville Lake is isolated from influence of Smith Mountain Operations and reflects the water quality of the lacustrine area. At multiple points along the reservoir, tributaries of various water quality empty into the lake. These tributaries do not account for a bulk of the water flowing through Leesville Lake but do deposit nutrients and other pollutants. And during periods of drawback, these pollutants are pulled back through the reservoir potentially enhancing impact and time spent in the reservoir.

The analyses in this report examine the data to support or revise the above described limnology of Leesville Lake. Section 1 analyzes each station relative its position (Riverine, Transition or Lacustrine) and the potential impact of each tributary has on observed water quality. Section 2 examines lake-wide trending and consideration of problems that should be investigated further. Section 3 presents management recommendations.



1.3.1.1 Dam (Lacustrine)¹

Background

The area near the Leesville Lake Dam is considered a Lacustrine section. It exhibits characteristics similar to a natural lake, allowing analysis for similarities to lake conditions.

Conductivity

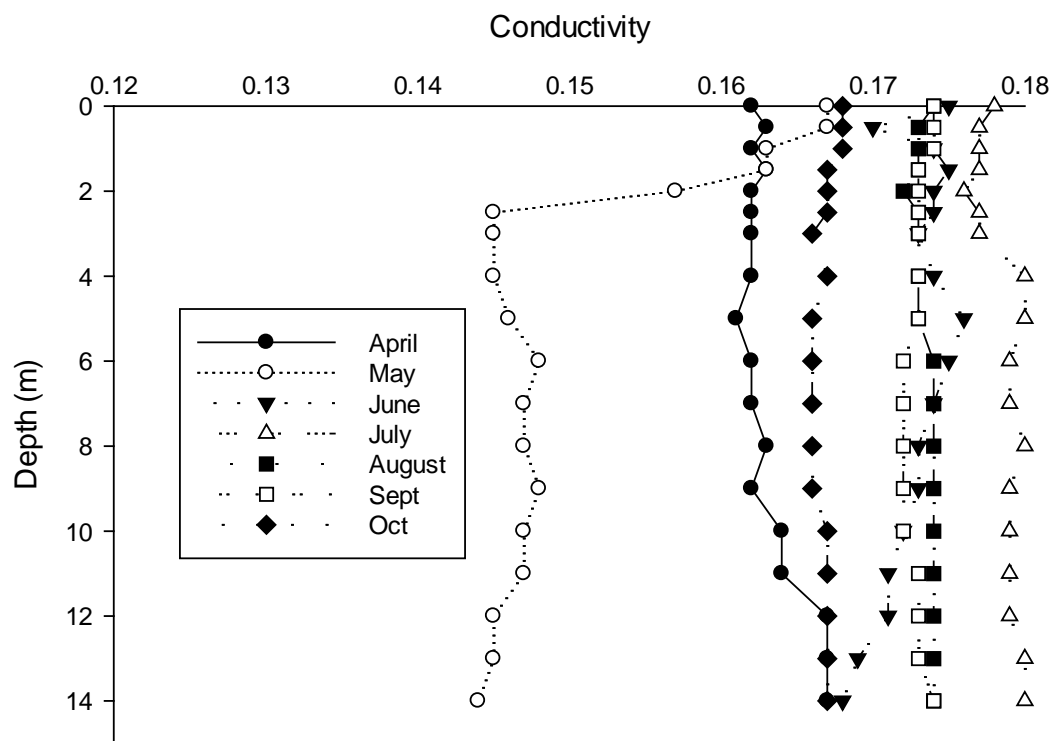


Figure 1.1. Dam (Lacustrine) Conductivity (ms/cm) measures over study period (2022)

Seasonal Analysis

Conductivity reflects the presence or absence of pollution or particulates that conduct an electrical current in the water. It is possible to correlate pollution with levels of

conductivity as this measure reflects the concentration of dissolved material in the water. More importantly, conductivity can be used to track water movement as Pigg River contains a lower conductivity than SML tail water release.

Conductivity usually does not stratify and remains between 0.135 and 0.18 mS/cm. It is generally higher in the summer months and lower in spring and fall. This suggests greater contributions from Smith Mountain Lake (higher conductivities) in the summer in LVL all the way through the dam station.

May was the only sampling date with a somewhat differing pattern. The pattern observed clearly suggest a significant storm filled the reservoir lowering conductivity with water from the Pigg River and then starting the process of refilling with SML tailwater release. This pattern supports the idea that SML tailwater release is the predominate water flow in LVL in times other than storm events.

Comparisons Across Years

All data collected in this study suggest conductivity is strongly driven by stormwater flow. Because Pigg River conductivity is considerably lower than water release from SML Dam, lower conductivity measures during any sampling date reflect increasing content of water from the Pigg River. Lower conductivity at the dam station suggests high flow from Pigg River and water quality will likely reflect this condition. While it is typically suggestive that higher conductivity reflects greater pollution, in this instance Pigg River water is of lower conductivity and will contain the greater concentration of pollutants, particularly sediment. While LVL does operate as a Run of the River Reservoir during storm events, at other time periods it does reflect the lower portions of SML. This creates conditions of complexity between water quality of Pigg River and that of SML tailwater release.

Dissolved Oxygen

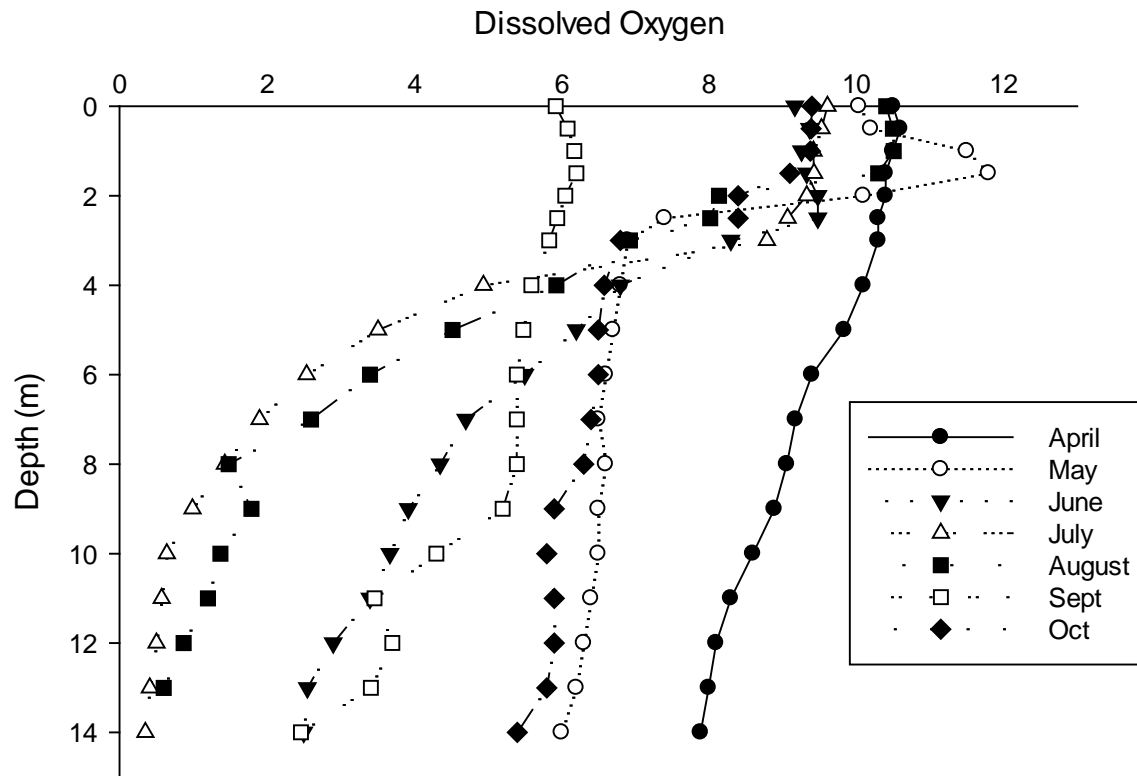


Figure 1.2. Dam (Lacustrine) Dissolved Oxygen (mg/L) measures over study period (2022)

Seasonal Analysis

Dissolved oxygen patterns in the reservoir demonstrate that the lake is eutrophic. Stratification begins in May with depletion of oxygen below the thermocline (about 4 meters depth). Between 2-4 meters depth the loss of oxygen is variable. Water depleted of oxygen tends to be evident higher into the water column as the season progresses. Oxygen loss is continual with concentrations at depth moving below 2 mg/L in July and August. With some variation, this is the typical pattern for the reservoir.

Comparisons Across Years

Oxygen profiles are very consistent throughout the years of study. Oxygen peaks occur between 2-3 meters of depth during months outside of July and August. These two

months (July and August contain the lowest oxygen measures at depth (often below 2 mg/L). Turnover of water occurs either in September or November when temperatures in the upper water column match those lower in the column and depends on the season and temperatures. Oxygen in the water during turnover is generally close to 6 mg/L but varies between 5-7 mg/L depending on the year.

Oxygen loss throughout the reservoir is dependent upon the strength of stratification. Thus, while the reservoir is polymictic it takes a very strong storm event for mixing to occur at the dam. Thus, oxygen loss in the hypolimnion is a function of strength of stratification. Water temperature and stormwater inflow have tremendous impact on this parameter, which may at time become problematic.

Temperature

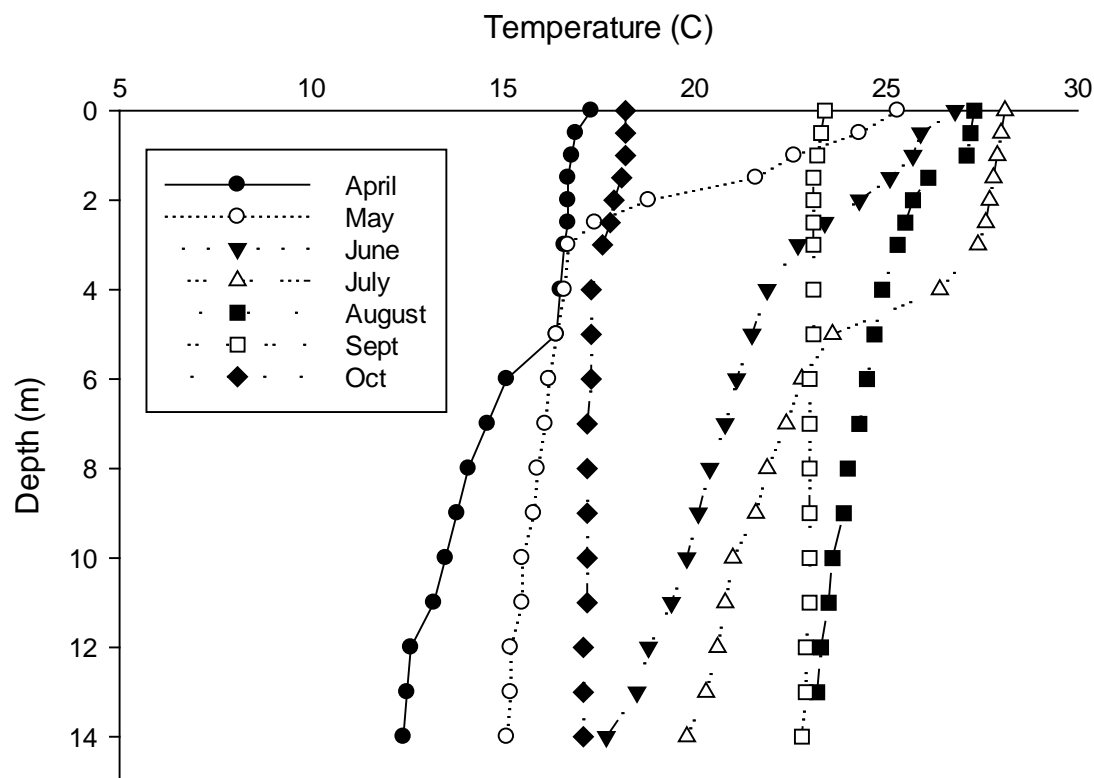


Figure 1.3. Dam (Lacustrine) Temperature (°C) measures over study period (2022)

Seasonal Analysis

With the exception of September, the reservoir was stratified during all sampling periods. The reservoir continued to warm into the summer months (both in the epilimnion and hypolimnion) and temperature stratification was visible throughout the summer with peaks nearing 30°C in July. September temperatures were still very warm and these measures demonstrate the time of turnover.

Comparisons Across Years

We do see variability in these profiles over time. Some years July is the warmest month while in other years August may be the warmest in the epilimnion (In 2022 it was July). In 2015, June was the warmest month. It is not uncommon to see temperatures reach 30C in these profiles but in some years (2019) the water does not warm to this extent. Stratification is consistent across years usually starting in April or May. The epilimnion establishes above 2 meters depth. The depths of 2-4 meters are the transition zone or metalimnion. The hypolimnion is below 4 meters depth. Throughout the seasons this is a consistent pattern in the reservoir.

Chlorophyll a

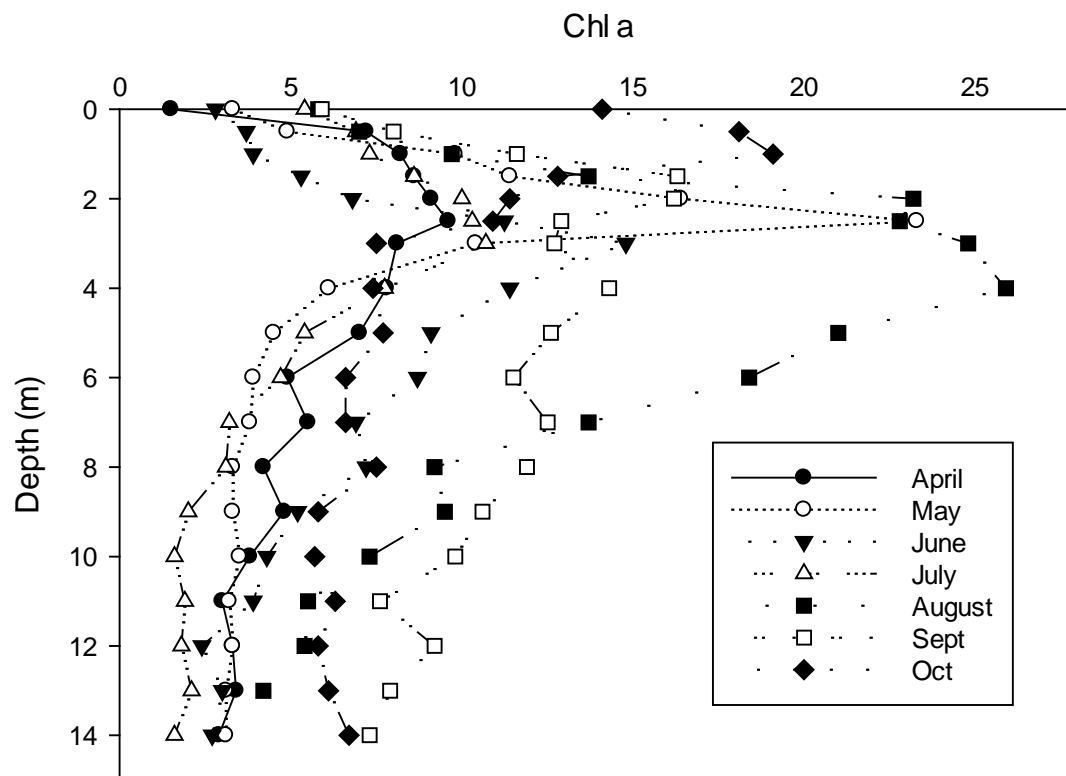


Figure 1.4. Dam (Lacustrine) Chlorophyll a (ppb) concentrations over study period (2022)

Seasonal Analysis

The reservoir continues to demonstrate a pattern of greatest phytoplankton growth, as indicated by increased chlorophyll content, just above the thermocline (between 2-4 meters). In 2022, phytoplankton seasonal peaks were observed at 4 meters depth. The

increase in productivity at 4 meters began in May and peaked in August. This is a typical pattern for eutrophic reservoirs where phytoplankton growth is photo-inhibited at the surface and blooms along the thermocline occur where nutrients are more available and temperatures very conducive for growth. It is instructive to see the amount of phytoplankton development in August as the area with concentrations in the eutrophic range extended into 8 meters depth. These increased peaks in Chlorophyll abundance are most observable in the summer months. In September during turnover greater concentrations were observed at greater depths.

Comparisons Across Years

The pattern of increased phytoplankton along the 2-4 meter thermocline in the reservoir is a well-established phenomenon in eutrophic lakes and in Leesville Lake. In most seasons, this pattern occurs throughout the summer months. The ultimate peak in phytoplankton growth usually occurs in July or August and it is variable in concentration. This season's peak was lower than observations in the past peaking near 25 mg/L. These are lower levels than we have been observed in the past. Certainly, this is cyclic and related to the amount of stormwater entering the reservoir and flushing phytoplankton biomass throughout the season and preventing its buildup.

pH

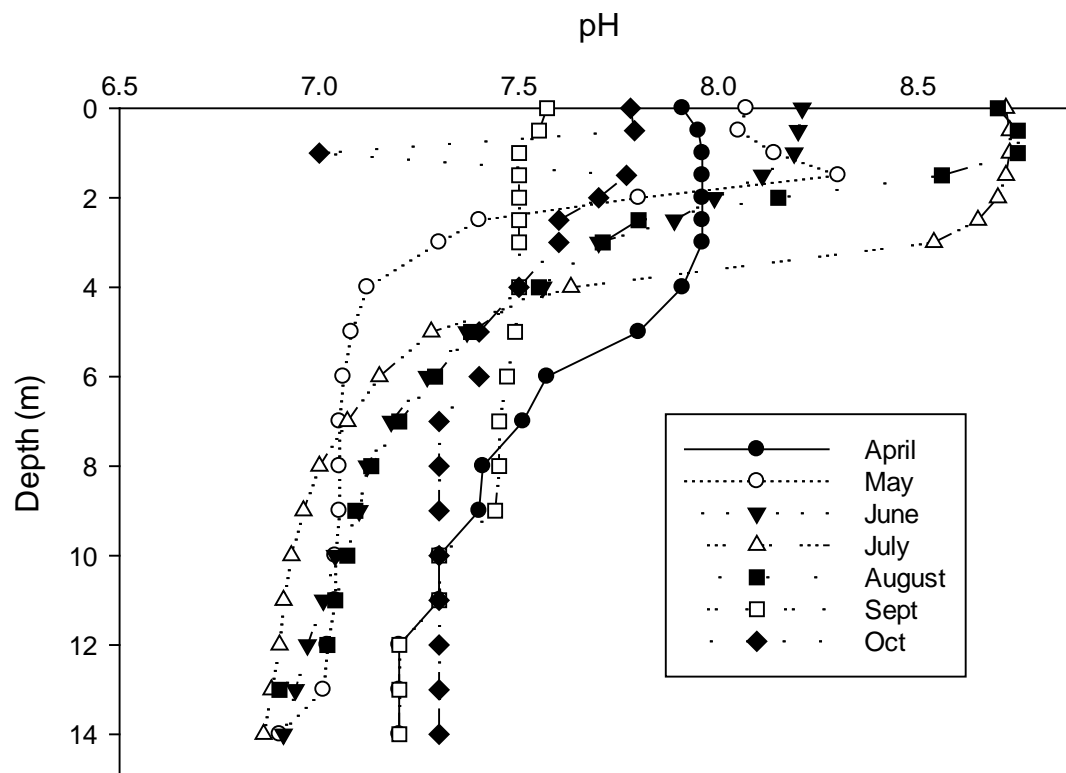


Figure 1.5. Dam (Lacustrine) pH measures over study period (2022)

Seasonal Analysis

The pH of water in the reservoir follows a typical curve for a eutrophic reservoir with soft water. The July and August measures were the highest observed for the season and this is a phenomenon related to phytoplankton growth. These pH changes are generated through phytoplankton photosynthesis as these organisms consume CO₂ and generate oxygen. In soft water (poorly buffered with compounds like calcium carbonate) this causes the pH to change quite rapidly. Carbon dioxide acts like an acid in water so its removal raises the pH. The very high chlorophyll *a* measures in August are consistent with the high pH measures.

Comparisons Across Years

The pattern of pH observed in the reservoir is relatively consistent across years. High pH (above 9) can sometimes be expected in the summer months when phytoplankton growth is at its peak with this measure strongly correlated to phytoplankton biomass. But peak pH is variable. In many seasons, the pH does not exceed 8.5. This season the peak was 8.8. In 2018, pH peak was near 10. Multiple factors help drive this pattern. It is important to note that high pH is very stressful to fish and due to the limited habitat available in the summer months and can generate toxic conditions in the presence of excess nutrient concentrations.

ORP

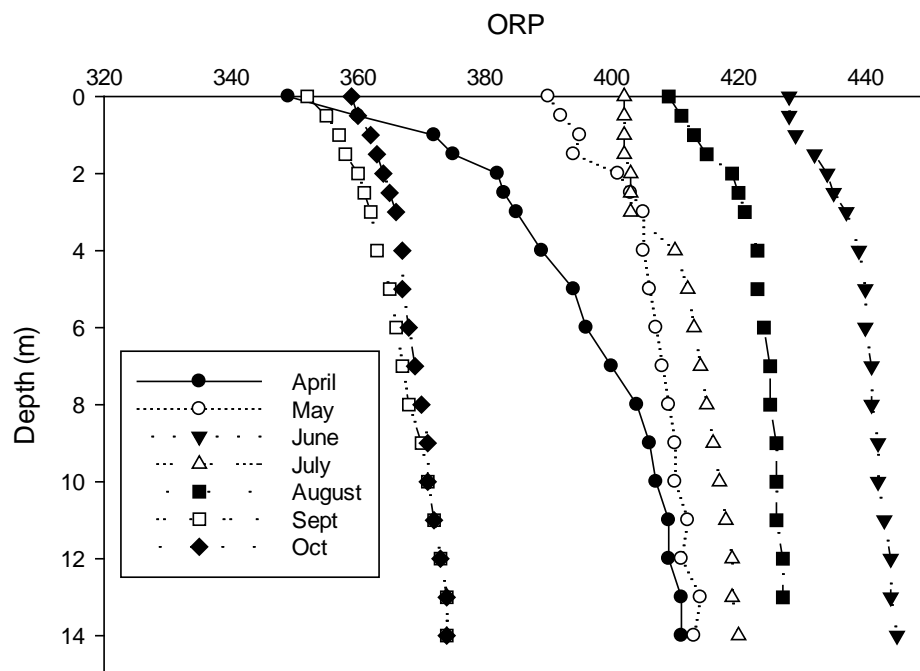


Figure 1.6. Dam (Lacustrine) ORP (mV) measures over study period (2022)

Seasonal Analysis

There is a pattern of slightly increased ORP with increasing water depth across seasons. Also, the lake is in a greater oxidized state during the summer, which is expected as oxygen concentrations tend to increase during this period of time. ORP values near 400mV and above are in the expected range for a productive reservoir.

Comparisons Across Years

On an annual scale, ORP measures differ from year to year. In some years we have observed seasonal values up to 700 or as low as 100 mV. This shows the tremendous variability with this measure. Consistently, the cooler and well-mixed months in the reservoir tend to have the greatest ORP measures. While this parameter only measures the potential for a redox reaction occurring, the values in the higher range (greater than 400) suggest better water quality.

Turbidity

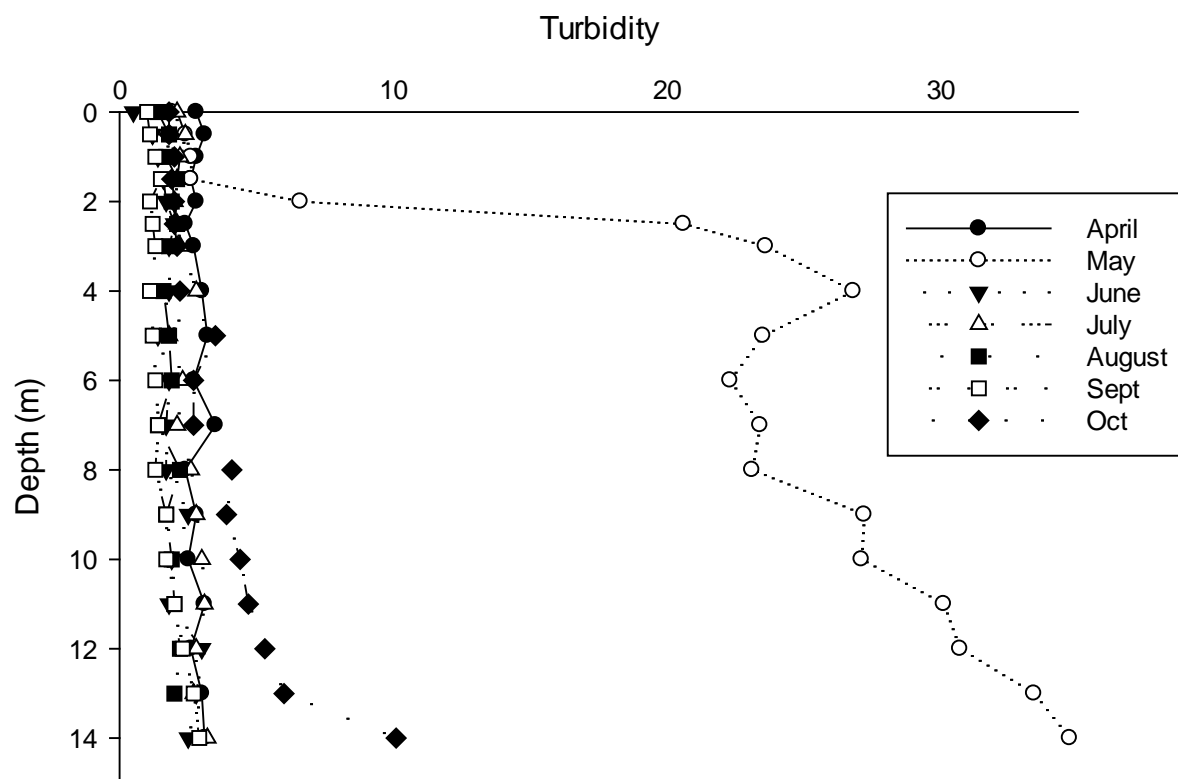


Figure 1.7. Dam (lacustrine) Turbidity (NTU) measures over study period (2022)
Seasonal Analysis

Turbidity at the dam is generally low, with values well below 10 NTU throughout the entire sampling season. The exception this season was in May and this was due to

stormwater throughout the reservoir. This condition was reflected through other measures as well (i.e., Conductivity). Turbidity is generally unimpacted by increasing Chlorophyll a productivity, with non-algal turbidity (sediment) being the most significant influence on this measure.

Comparisons Across Years

When turbidity is elevated, it generally increases with depth. More recently, we have not seen this pattern develop. Turbidity in previous seasons (2017 and earlier) can be observed to have a biological component as it increased from the surface into the thermocline. In observations since 2018, only non-algal turbidity appeared to register. This may suggest the reservoir is becoming more turbid with sediment input exerting more control.

Other Parameters Measured

Table 1.8. Other parameters measured over study period (2022). Dates represent sampling of both the volunteers and University of Lynchburg. First Column represents each parameter measured along with units of measure.

	29-Apr	31-May	15-Jun	29-Jun	14-Jul	28-Jul	12-Aug	29-Aug	28-Sept	26-Oct
Time	1:01 PM	11:55 AM	9:05 AM	12:32 PM	9:08 AM	11:40 AM	9:00 AM	10:50 AM	12:30 PM	3:20 PM
Secchi (M)	2.20	2.30	2.3	3.40	2.4	2.30	2.2	2.40	1.90	1.90
TP Surface	0.056	0.011	0.06	0.075	0.077	0.129	0.105	0.007	0.002	0.098
TP 8 Meters		0.097		0.307		0.112		0.047	0.017	0.019
Integrate Chl	5.72	6.70		6.30		5.24		13.36	11.04	9.23
TSI S	49	48	48	42	47	48	49	47	51	51
TSI TP	59	39	60	63	63	71	68	35	26	67
TSI CHL	48	49		49		47		56	54	52
TSI AVG	52	45	54	51	55	55	58	46	44	57
<i>Daphnia</i>	0.56	0.81		2.43		0.61		0.20	0.20	0.10
<i>Bosmina</i>	7.58	3.89		1.31		1.21		1.42	0.91	1.31
<i>Diaptomus</i>	1.36	1.42		1.62		0.40		0.20	0.51	0.00
<i>Cyclops</i>	8.64	0.56		1.42		0.40		0.81	0.81	0.30
<i>Nauplii</i>	3.29	1.16		1.21		1.01		0.91	0.91	1.21
<i>Cerodaphnia</i>	0.05	0.00		0.00		0.00		0.00	0.20	0.00
<i>Diaphanosom</i>	0.05	0.81		0.71		1.62		0.10	0.10	0.20
<i>Chydorus</i>	0.00	0.00		0.10		0.00		0.00	0.00	0.00
<i>E. coli</i> MPN	3.10	5.20	9.9	0.00	16.1	2.00	3	1.00	5.20	3.10

1.3.1.2 Leesville Lake Marina / Old Woman's Creek



Photograph of Leesville Lake Marina taken by Jade Woll.

Table 1.10. Leesville Lake Marina other parameters measured over study period (2022).

	29-Apr	31-May	15-Jun	29-Jun	14-Jul	28-Jul	12-Aug	29-Aug	28-Sept	26-Oct
Time	1:45 PM	12:33 PM	9:39 AM	1:15 PM	9:25 AM	11:56 AM	9:13 AM	11:30 AM	12:55	3:39 PM
Secchi (M)	1.70	1.60	1.7	2.6	1.9	2.20	1.8	2.20	1.60	1.60
(PPM)	0.050	0.181		0.113		0.223		0.063	0.029	2.206
TSI S	52	53	52	46	51	49	52	49	53	53
TSI TP	58	75		69		78		61	50	111
TSI AVG	55	64	52	57	51	63	52	55	52	82
cfu/100ml	6.30	7.50	2	6.3	6.3	1.00	10.7	0.00	181.00	1.00

Table 1.11. Tri County Marina other parameters measured over study period (2022).

	29-Apr	31-May	15-Jun	29-Jun	14-Jul	28-Jul	12-Aug	29-Aug	28-Sept	26-Oct
Time	1:55 PM	12:40 PM	9:51 AM	1:26 PM	9:38 AM	12:05 PM	9:27 AM	11:41 AM	1:03	3:46 PM
Secchi (M)	2.10	1.10	1.7	2.5	1.7	1.90	1.5	2.10	1.40	1.50
TP Surface (PPM)	0.047	0.063		0.156		0.073		0.142	0.012	0.012
TSI S	49	59	52	47	52	51	54	49	55	54
TSI TP	57	61		73		63		72	40	40
TSI AVG	53	60	52	60	52	57	54	61	48	47
<i>E. coli</i> cfu/100ml	4.10	48.00	4.2	2	7.4	6.30	4.1	5.00	4.10	1.00

1.3.1.3 Tri County Marina



Photograph of Tri County Marina taken by Jade Woll.

1.3.1.4 Mile Marker 6 (Transition)²



Background

In discussing water quality at the transition station (MM6), comparisons are made back to Lacustrine and Riverine portions of the lake. This section does not provide further discussions of the patterns observed at the Dam (Lacustrine) or Toler Bridge (Riverine), but to discern any trends the data provides on a spatial scale moving up or down the lake.

² *Photograph of Leesville Lake taken by Jade Woll*

Conductivity

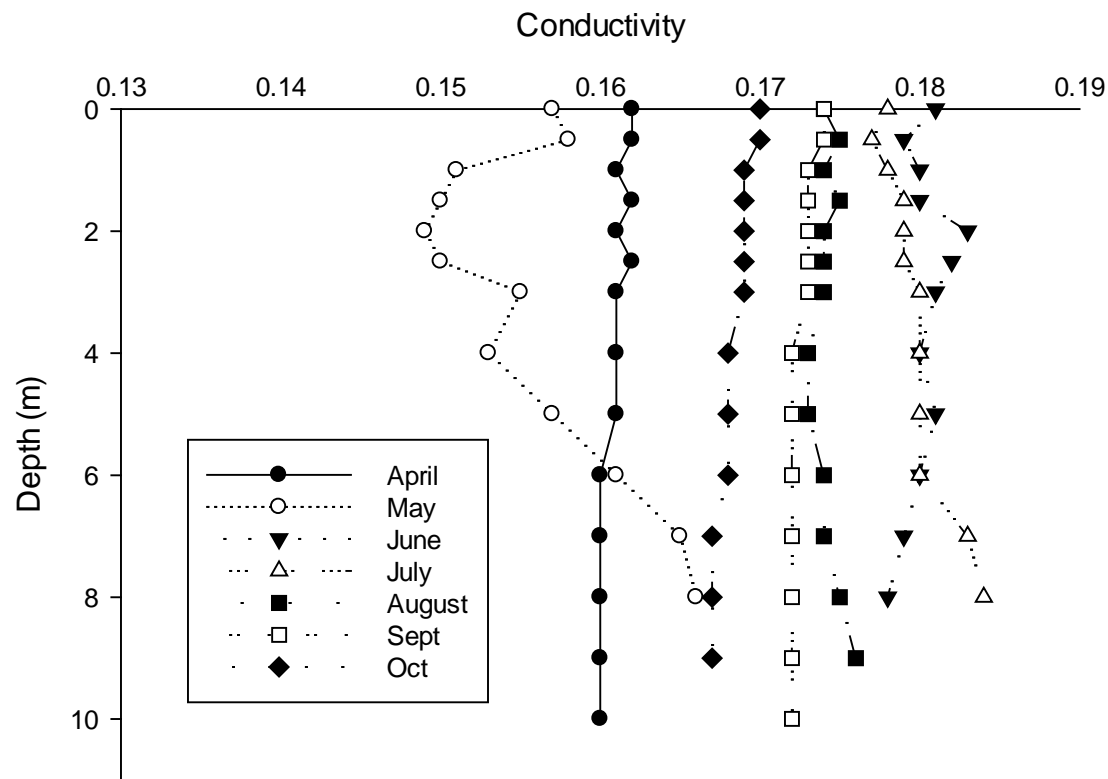


Figure 1.8. Mile Marker 6 (Transition) Conductivity (ms/cm) measures over study period (2022)

Seasonal Analysis

Conductivity patterns at the transition region are reflective of a mixed condition, i.e., a general absence of stratification. We do not see the same stratification pattern observed at the dam. Consistent readings from surface to depth at this station support this conclusion. The one exception, as with the last several seasons, was observed in May. Lower conductivities overall (compared with other stations) and higher conductivity at depth suggest a preponderance of Pigg River water in the reservoir at this station and movement of Pigg River water at the water's surface. This gives us insights into how water masses move throughout the lake and this pattern differs at this station when compared to the dam.

Comparisons Across Years

Comparisons among years suggests that conductivity is declining in Leesville Lake. This pattern strongly suggests the Pigg River is exerting greater influence on the patterns of observed water quality observed because Pigg River water is of lower

conductivity. A portion of this observation can be assumed to originate from the water mass in the reservoir as the season begins due to lower electricity demand and much of the water in Leesville Lake originating from Pigg River flow. Winter lake data are not collected but April readings can provide inferences suggesting this is the condition. Initial readings in April are variable across the years of study and may reflect the primary source of water input at the beginning of the season. In 2021, April conductivity readings were lowest recorded suggesting the influence of the Pigg is greatest in winter and then minimizes as SML operations intensify. This relationship will be further discussed in the analysis section.

Dissolved Oxygen

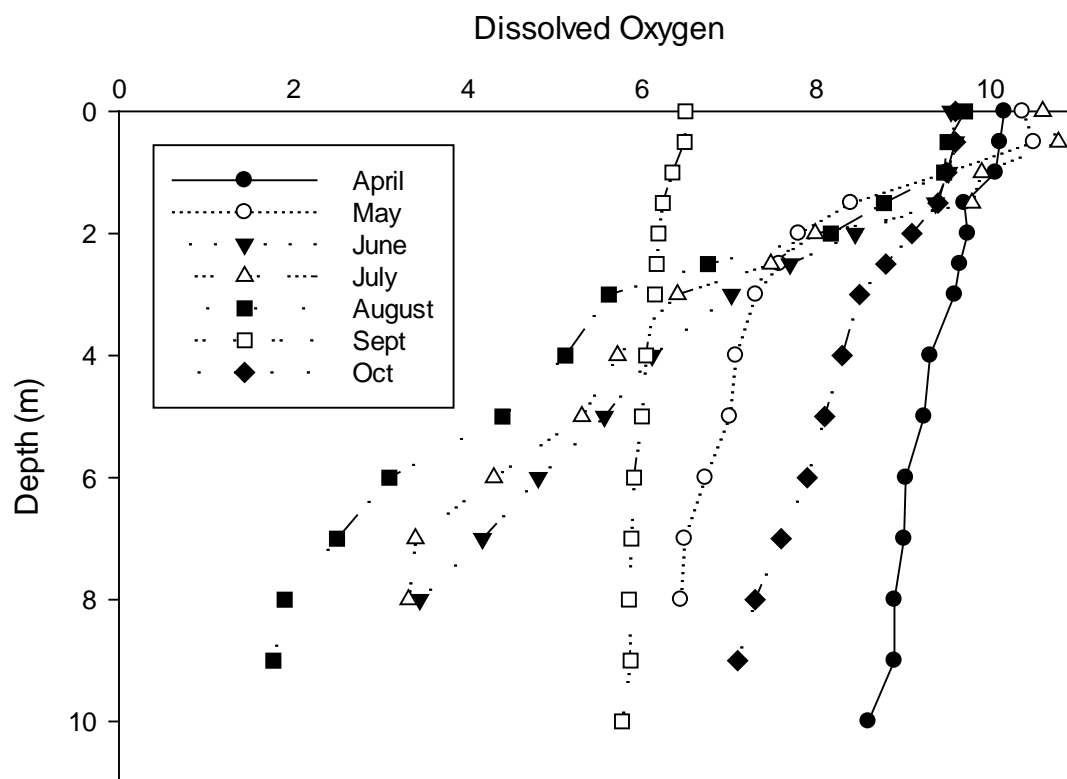


Figure 1.9. Mile Marker 6 (Transition) Dissolved Oxygen (mg/L) measures over study period (2022)

Seasonal Analysis

This portion of the reservoir is completely mixed in the cooler months and stratified in summer. During those three months, we observed a strong enough stratification pattern for dissolved oxygen to reach levels below 4 mg/L. This suggests that not only is MM6 a transition area in the reservoir but that it may provide a good refuge for fish in the reservoir as the oxygen and temperature combination may provide better habitat in

those months due to deteriorating conditions in the upper portions of the reservoir. The suggestion here is a combination of temperature and oxygen providing the refuge for fish.

Comparisons Across Years

Oxygen observations are variable across seasons and within season. In some seasons, stratification is strong and we see oxygen depletion at greater depths during the summer months. In other seasons, such as 2021, dissolved oxygen is present at reasonable levels most of the season, even at the lower depths in a stratified column of water. Whereas during other years, dissolved oxygen is very low (below 4 mg/L) throughout the water column at all times. The best conclusion is that this station is variable both on a spatial scale (from dam to headwaters) and temporal scale (across and within seasons). This pattern has a strong influence on water quality from year to year.

Temperature

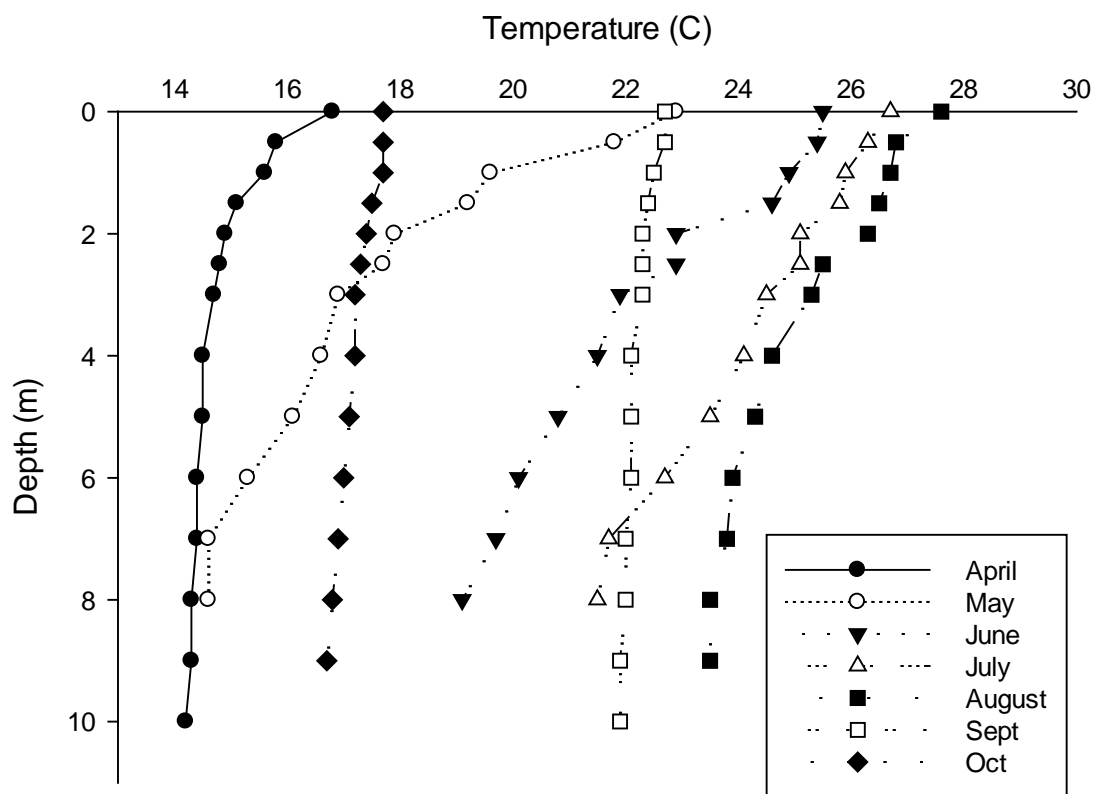


Figure 1.10. Mile Marker 6 (Transition) Temperature (°C) measures over study period (2022)

Seasonal Analysis

Thermal stratification in this section of the reservoir is weak (subject to fluctuation and mixing due to weather and water movement). This correlates well with the previous observations concerning oxygen content. The benefit of this weak stratification is that it increases oxygen content, which has become a significant concern. Conceptually, this station is situated between the LVL dam (stronger stratification because of depth and restricted water movement) and Toler Bridge headwaters (limited stratification due to water movement from Pigg River and SML dam release) each with oxygen loss problems.

Comparisons Across Years

While temperatures at this station parallel the influence of season throughout the reservoir, the pattern of minimal stratification at this site is consistent across and within years. Thus, this station is a good example of a transition zone, influenced by both riverine and lacustrine forces.

Chlorophyll a

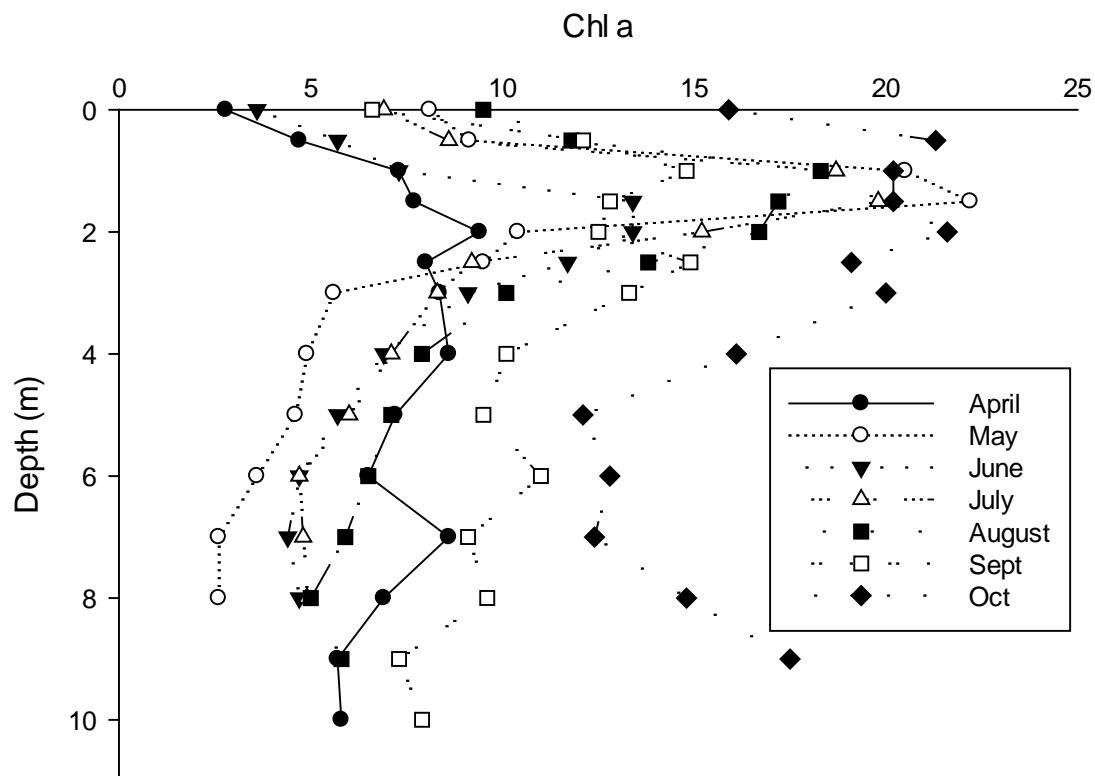


Figure 1.11. Mile Marker 6 (Transition) Chlorophyll a (ppb) concentrations over study period (2022)

Seasonal Analysis

The transition area is theoretically the portion of the reservoir where phytoplankton abundance measured by Chlorophyll *a* can be very high. Nutrient input from the upper portions of the reservoir mixes with the warmer and slowly moving water mass to create ideal conditions for phytoplankton growth. Interestingly, this year the peaks in chlorophyll *a* were observed in the water column, but their magnitude was limited and did not exceed concentrations at other stations. In fact, here and at the dam Chlorophyll *a* was relatively low. Additionally, Chlorophyll *a* increased in October over concentrations observed over summer. While phytoplankton speciation was not quantified in years past this represented a transition from Blue-greens and Greens to diatoms due to colder weather and the availability of nutrients. Drivers of the relationship between phytoplankton, water flow and nutrient levels drive observed productivity at this station.

Comparisons Across Years

High peaks in phytoplankton biomass and pattern of growth above the thermocline are not consistently observed at this station across years. Typically, phytoplankton biomass is elevated throughout the water column from 2-5 meters depth and at concentrations of 20-30 ug/L. Greater than average measures of Chlorophyll *a* may be a function of reduced stormwater flow flushing Leesville Lake or setup of water and nutrients available from winter/early spring water flow and SML operation.

pH

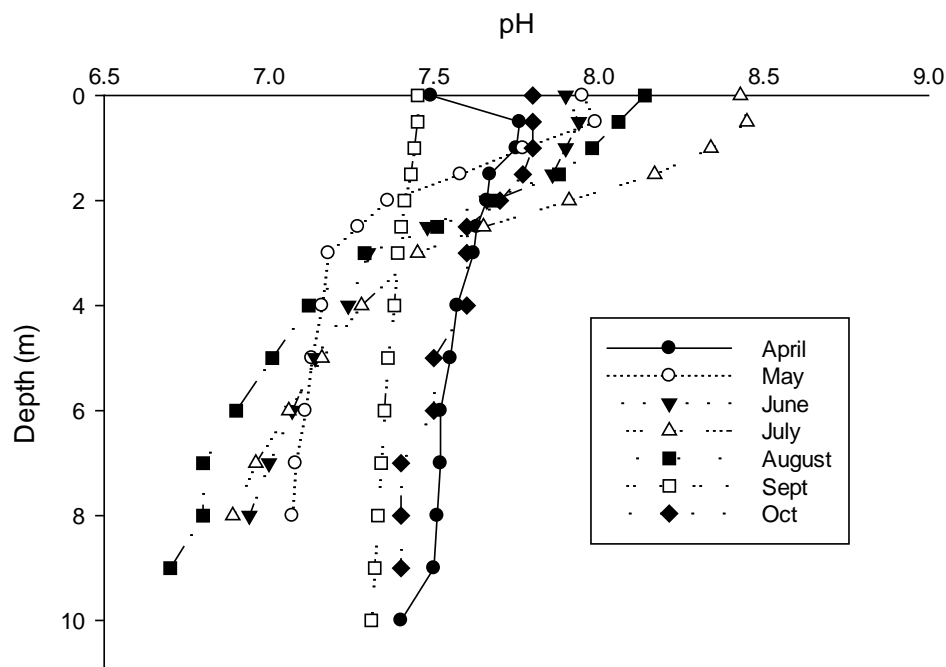


Figure 1.12. Mile Marker 6 (Transition) pH measures over study period (2022)

Seasonal Analysis

The pH pattern is very similar to that observed at the dam and the pattern of stratification in the reservoir. In cooler months, pH is lower than summer months and during all months other than September (with turnover) shows a patterns of stratification. Elevated pH does follow the pattern of Chlorophyll *a*, with July demonstrating higher pH measures. This pattern is also influenced by temperature.

Comparisons Across Years

This is a variable station and influenced by a multitude of factors. The lower readings this year suggest many physical factors influenced the biology in the reservoir and this is reflected in the pH values.

ORP

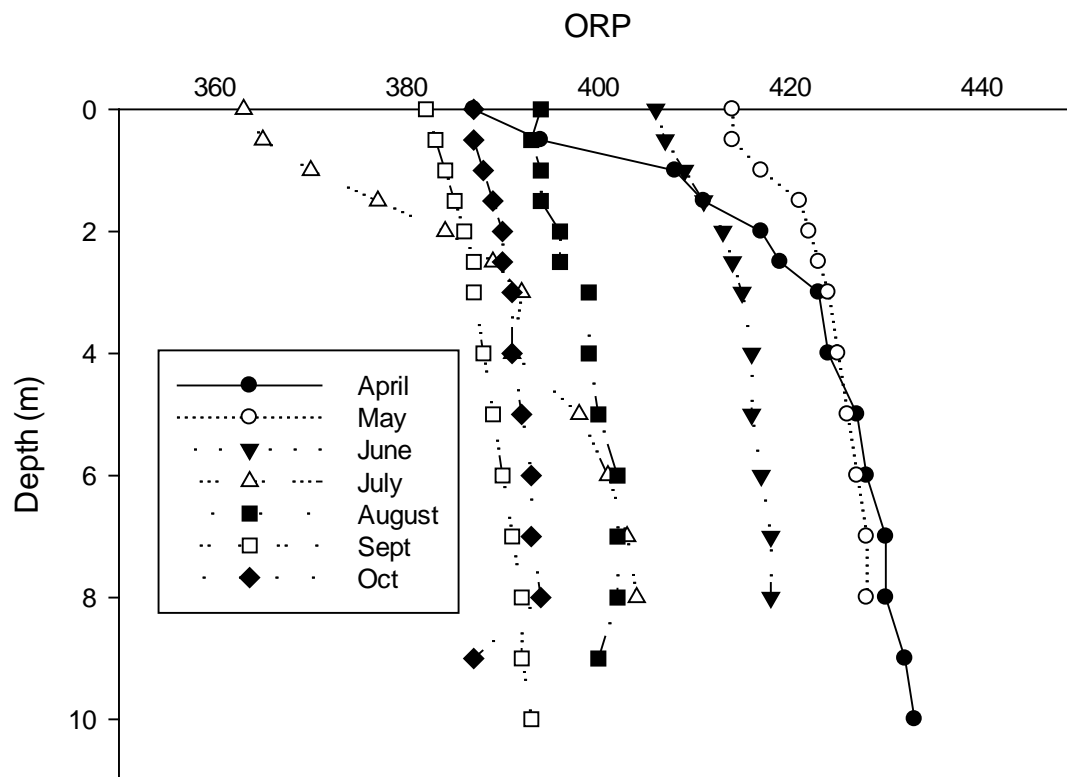


Figure 1.13. Mile Marker 6 (Transition) ORP (mV) measures over study period (2022)

Seasonal Analysis

Patterns of ORP at this station are similar to those observed at the dam. The high ORP during April and May reflect the changes that occur in this transition zone particularly during the spring months. By summer, the patterns are similar to those at other station. The most important aspect of ORP is the oxidized environment in the lake and the importance of this condition to the chemical speciation.

Comparisons Across Years

ORP has been variable over multiple years at this station. It is hard to pinpoint particular conditions that may have contributed to this pattern but lower ORP during recent years suggest a worsening water quality. Still, observations in this year's sampling are in the expected range for this reservoir.

Turbidity

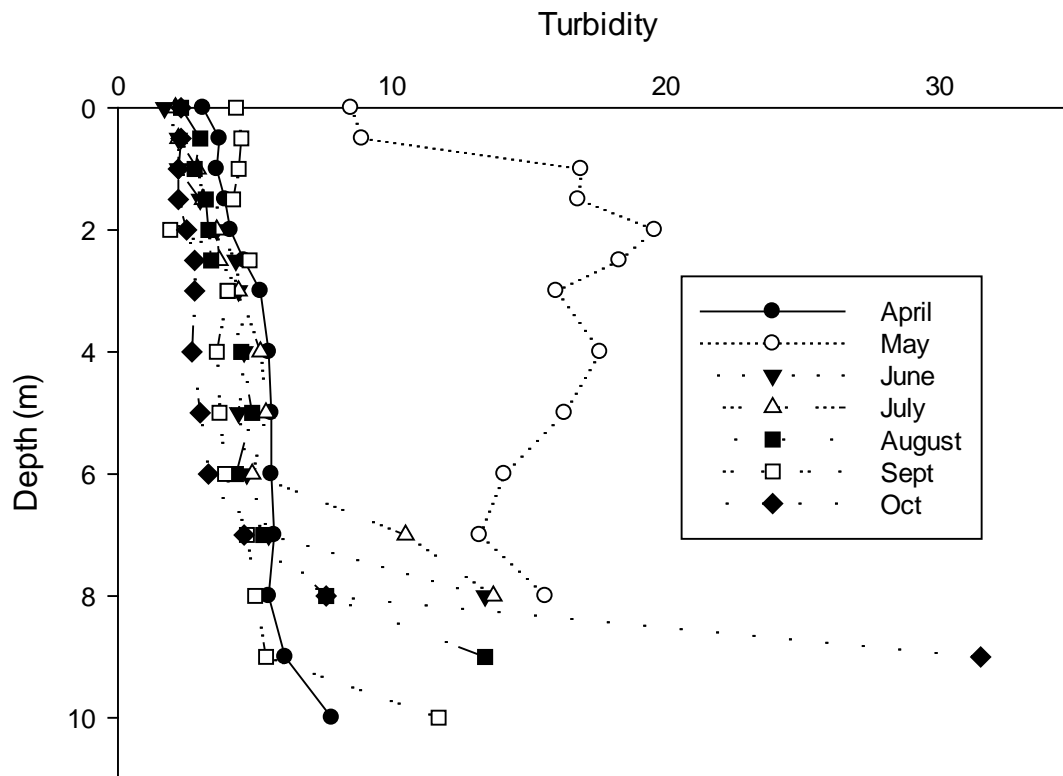


Figure 1.14. Mile Marker 6 (Transition) Turbidity (NTU) measures over study period (2022)

Seasonal Analysis

Turbidity at this station is consistent with that at the rest of the reservoir, with elevated turbidity during May due to stormwater. Some of the elevated measures at greatest depth are due to stirring of the bottom sediments during measurement. The variable depth of the reservoir influences reservoir depth at this station.

Comparisons Across Years

Turbidity patterns at this station are variable across years. Turbidity during some years has been much higher and other seasons has been lower than this year's observations. This station as a transition zone is variably influenced by both clearer water due to lacustrine conditions and more turbid water from the upper portions of the reservoir. These conditions are reflected throughout the many seasons of measurement.

Other Parameters Measured

Table 1.19. Other parameters measured over study period (2022). Dates represent sampling of both the volunteers and university. First column lists each parameter measured along with units of measure. All TSI measures are unitless and zooplankton are in animal per liter.

	29-Apr	31-May	15-Jun	29-Jun	14-Jul	28-Jul	12-Aug	29-Aug	28-Sept	26-Oct
Time	2:10 PM	12:50 PM	10:02 AM	1:40 PM	9:50 AM	12:11 PM	9:37 AM	11:50 AM	1:17 PM	3:51 PM
Secchi (M)	1.6	8.2	1.7	2.5	1.7	1.9	1.6	1.75	1.3	1.5
TP Surface (PPM)	0.063	0.059	0.067	0.096	0.091	0.061	0.088	0.108	0.031	0.036
TP 8 (6) Meters (PPM)		0.039		0.307		1.34		0.038	0	0.046
Integrate Chl a (PPB)	5.61	7.74		8.64		7.70		10.43	10.82	17.23
TSI S	53	30	52	47	52	51	53	52	56	54
TSI TP	61	60	61	66	66	60	65	68	51	53
TSI CHL	48	51		52		51		54	54	59
TSI AVG	54	47	57	55	59	54	59	58	54	55
Daphnia	0.51	0.24		1.11		0.00		0.00	0.20	0.10
Bosmina	11.83	3.30		1.31		0.10		0.61	0.61	0.61
Diaptomus	0.30	1.06		0.51		0.10		0.00	0.10	0.00
Cyclops	1.82	1.18		0.91		0.10		0.30	0.61	0.51
Nauplii	1.31	1.06		0.81		0.61		0.00	0.91	0.71
Cerodaphnia	0.00	0.24		0.10		0.00		0.00	0.10	0.00
Diaphanosoma	0.10	0.35		0.61		1.01		0.20	0.30	0.20
Chydorus	0.00	0.00		0.00		0.00		0.00	0.00	0.00
E. coli MPN/100ml	4.10	46.40	1	1	12.1	8.40	6.3	3.00	5.2	5.20

1.3.1.5 Mile Marker 9 (Riverine)



Photograph of Leesville Lake taken by Jade Woll.

Table 1.21. Mile Marker 9 other parameters measured over study period (2022)

	29-Apr	31-May	15-Jun	29-Jun	14-Jul	28-Jul	12-Aug	29-Aug	28-Sept	26-Oct
Time	2:35 PM	1:15 PM	10:13 AM	1:54 PM	10:05 AM	12:35 PM	9:55 AM	12:17 PM	13:10	4:15 PM
Secchi (M)	1.90	0.90	1.5	2	1.1	1.40	1.2	1.60	1.55	1.40
TP Surface	0.044	0.150		0.178		0.100		0.128	0.069	0.048
TSI S	51	62	54	50	59	55	57	53	54	55
TSI TP	56	73		75		67		70	62	57
TSI AVG	53	67	54	63	59	61	57	62	58	56
cfu/100ml	8.40	187.20	1	2	8.5	6.30	5.2	2.00	6.30	8.60



1.3.1.6 Toler Bridge (Riverine)³

Background

Riverine conditions as well as influx of tail waters of Smith Mountain Lake and influx of Pigg River water heavily influence waters at the Toler Bridge station. We see a combination of the water qualities from Pigg River discharge and SML hypolimnion release. The resulting water quality is completely driven by hydrological dynamics of the SML Dam (a mechanistic event) with river flow from the Pigg River (a stochastic event) thus creating a very dynamic system that is challenging to interpret.

³ *Photograph of Toler Bridge taken by Jade Woll.*

Conductivity

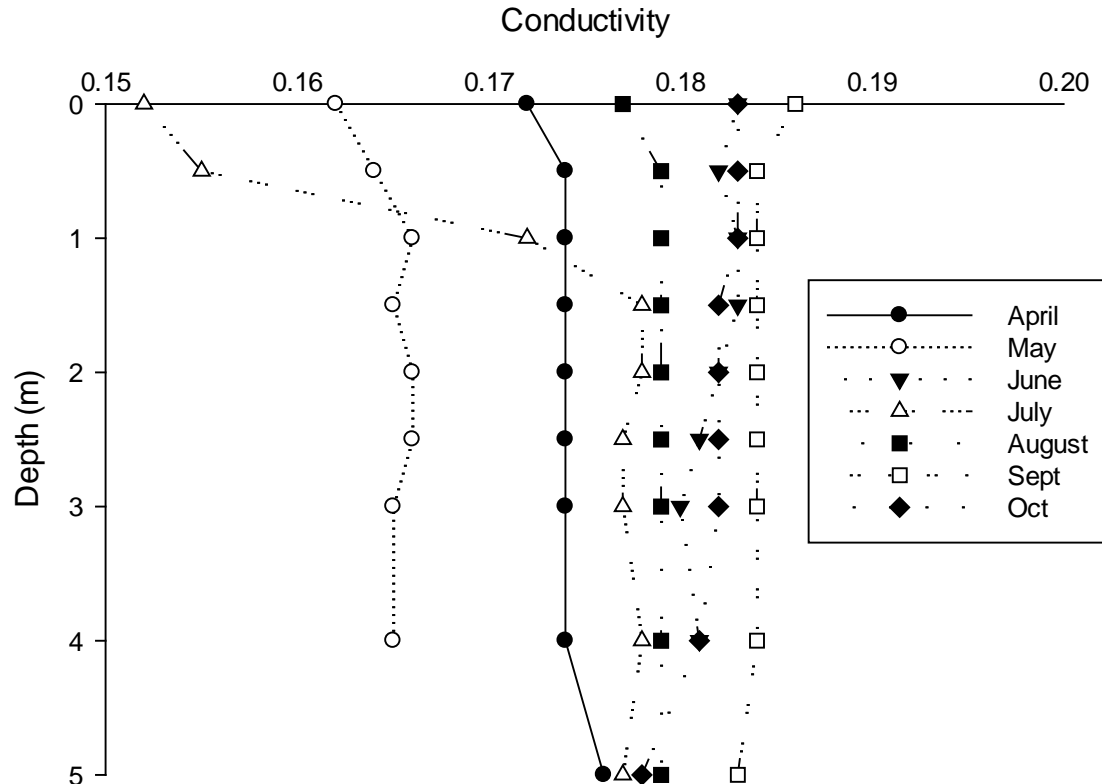


Figure 1.15. Toler Bridge (Riverine) Conductivity (ms/cm) measures over study period (2022).

Seasonal Analysis

Conductivity in this portion of the reservoir is usually consistent (minimal change) from top to bottom unless some type of pumping or heavy flow from the Pigg River stratifies it. Only observations in July suggest water from the Pigg over water from other portions of the reservoir. Otherwise, this station is mixed and mostly dominated by SML release.

Comparisons Across Years

Observations of conductivity at this station over time demonstrate that SML release is the predominate controlling hydrology in the headwaters of LVL. Only during certain periods of time (most likely driven by stormwater flow) does Pigg River contribute enough water to influence readings at this station. This strongly suggests that LVL headwaters are an extension of SML hypolimnion with the addition of Pigg River pollutants. Sound water quality management of SML has profound impact on both reservoirs.

Dissolved Oxygen

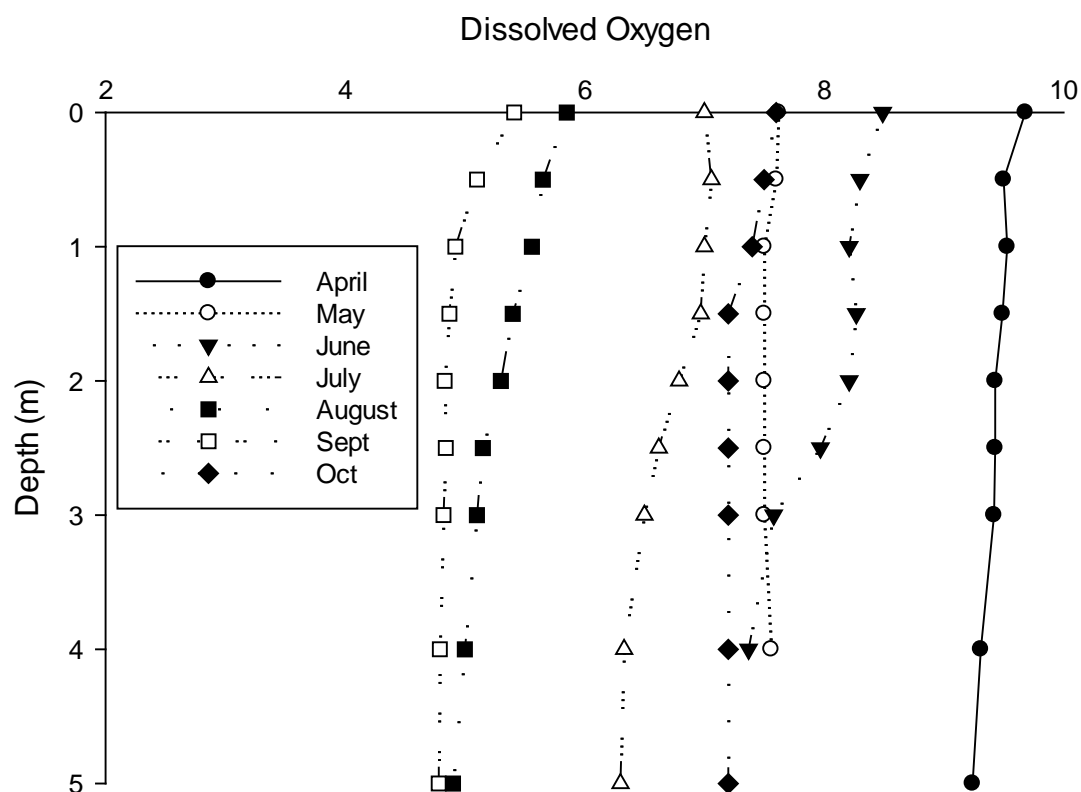


Figure 1.16. Toler Bridge (Riverine) Dissolved Oxygen (mg/L) measures over study period (2022)

Seasonal Analysis

Dissolved oxygen here is often a reflection of SML release but can be elevated due to Pigg River input. Observations are highly dependent on water movement. Several generalizations from this data are possible. First, water is not stratified at this station. Depth and water movement prevent this from occurring. Secondly, oxygen concentration here decline throughout the season as the hypolimnion of SML that

discharges into LVL declines. This pattern is apparent and in several instances approaches levels below 5 mg/L.

Comparisons Across Years

Dissolved oxygen at this station is a function of water release. When conductivity is elevated, dissolved oxygen is low. In the later months of the season, dissolved oxygen levels below 5 mg/L can be observed throughout the upper portion of the reservoir here suggesting tailwater release has far reaching impacts in LVL.

Temperature

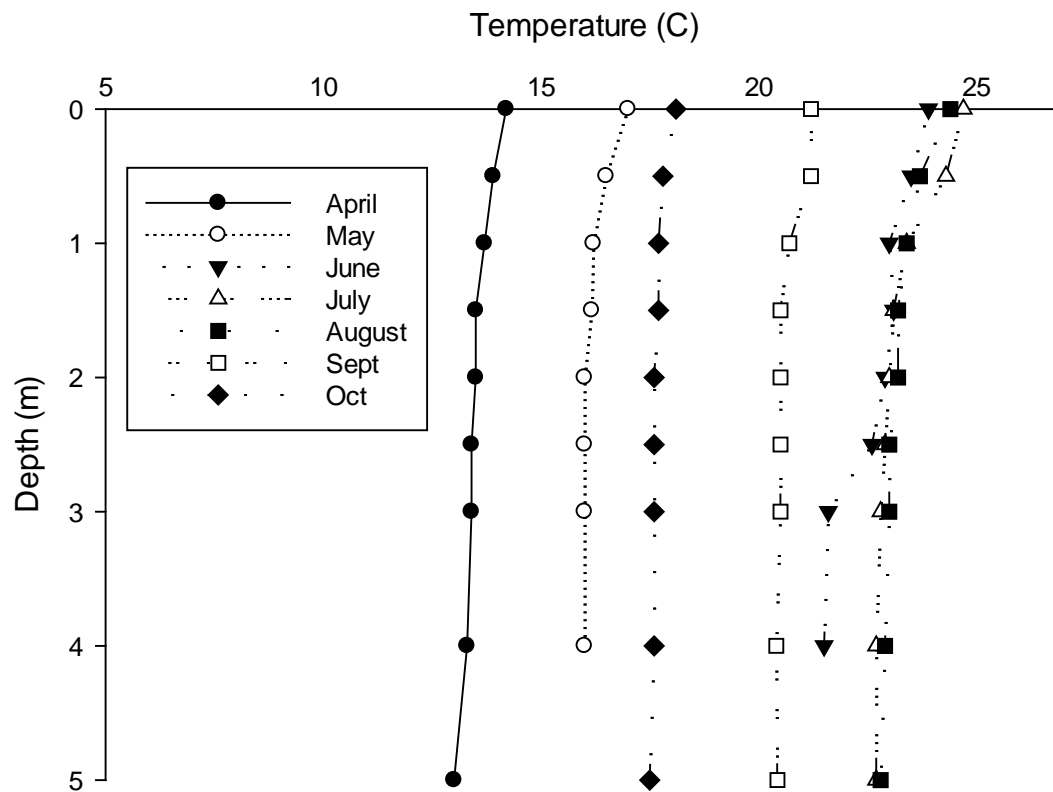


Figure 1.17. Toler Bridge (Riverine) Temperature (°C) measures over study period (2022)

Seasonal Analysis

This station does not stratify because water released from SML creates flowing conditions at this station. The water movement is frequently too strong to allow the water enough time to develop layers. Measures of this parameter reflect this strong water flow with the cooler temperatures than in other portions of the reservoir. This again supports the idea LVL headwaters are strongly influenced by SML tailwaters.

Comparisons Across Years

Lack of stratification at Toler Bridge is consistently observed across the years. Water flow from SML causes constant movement of the water at this station limiting the opportunity for stratification. We usually see this only during the spring months. During the summer, electricity demand and typically lower stormwater flow set up conditions for extensive water movement from pump back and release in LVL headwaters.

Chlorophyll a

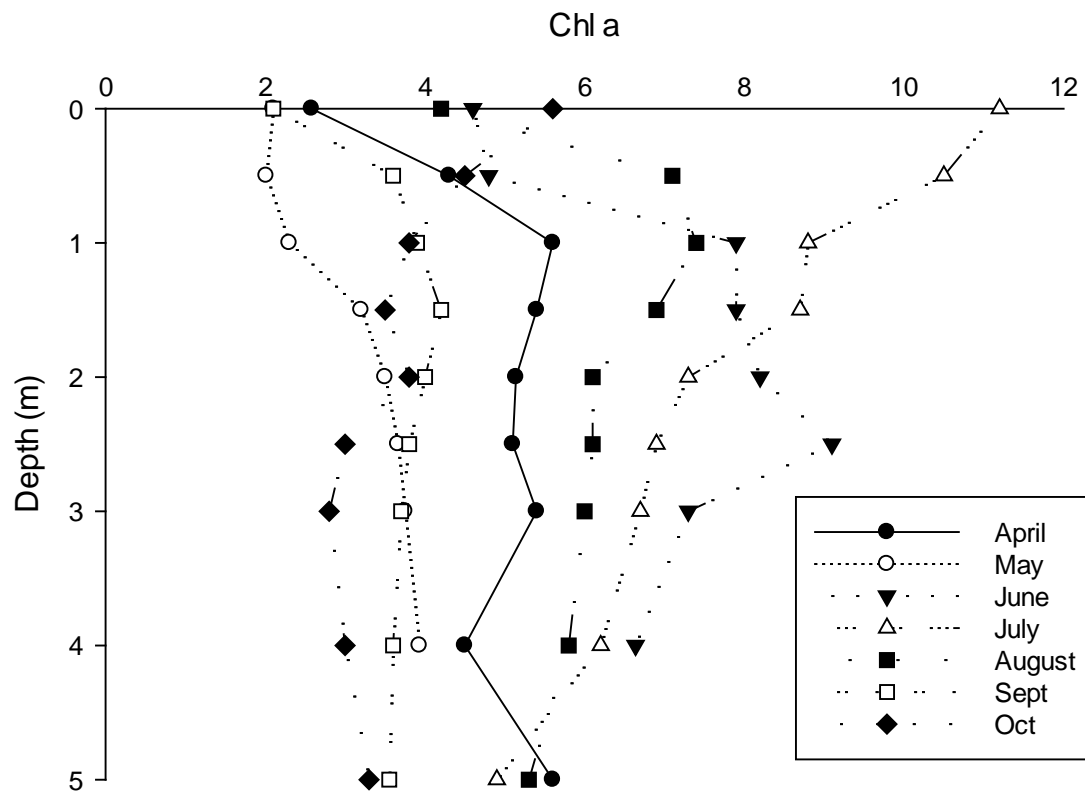


Figure 1.18. Toler Bridge (Riverine) Chlorophyll a (ppb) concentrations over study period (2022)

Seasonal Analysis

This station typically contains the lowest readings of phytoplankton biomass throughout the entire reservoir each season. But the pattern this year provides some insight into how water flow in LVL influences productivity throughout the lake. In June, phytoplankton biomass attained one of the highest concentrations measured at Toler Bridge. During this historical increase in phytoplankton, water was clearly composed primarily of Pigg River input based on conductivity readings (Figure 1.15). Without flushing and movement of water into and out of SML and along with warming

temperatures (Figure 1.17), phytoplankton increases occurred very rapidly. This increase was measured through MM6 (Figure 1.11) with Chlorophyll *a* concentrations up to 100 ug/L or hypereutrophic conditions. The inference is quite clear. Inputs of water from SML hypolimnion mitigates nutrient laden water from Pigg River during periods of power generation. When these mechanisms are minimized in the absence of significant power generation, LVL has the capacity to create hypereutrophic conditions.

Comparisons Across Years

Growth of phytoplankton in this area is completely dependent on flow and movement of water. In some seasons we can detect a buildup and increase in Chlorophyll *a* during the summer months. But as demonstrated this season, buildup of phytoplankton biomass in June can be quickly mitigated later in the summer and fall due to SML hypolimnion release. This is a very positive impact of dam operations for LVL. The negative side effect is the low dissolved oxygen of the water released.

pH

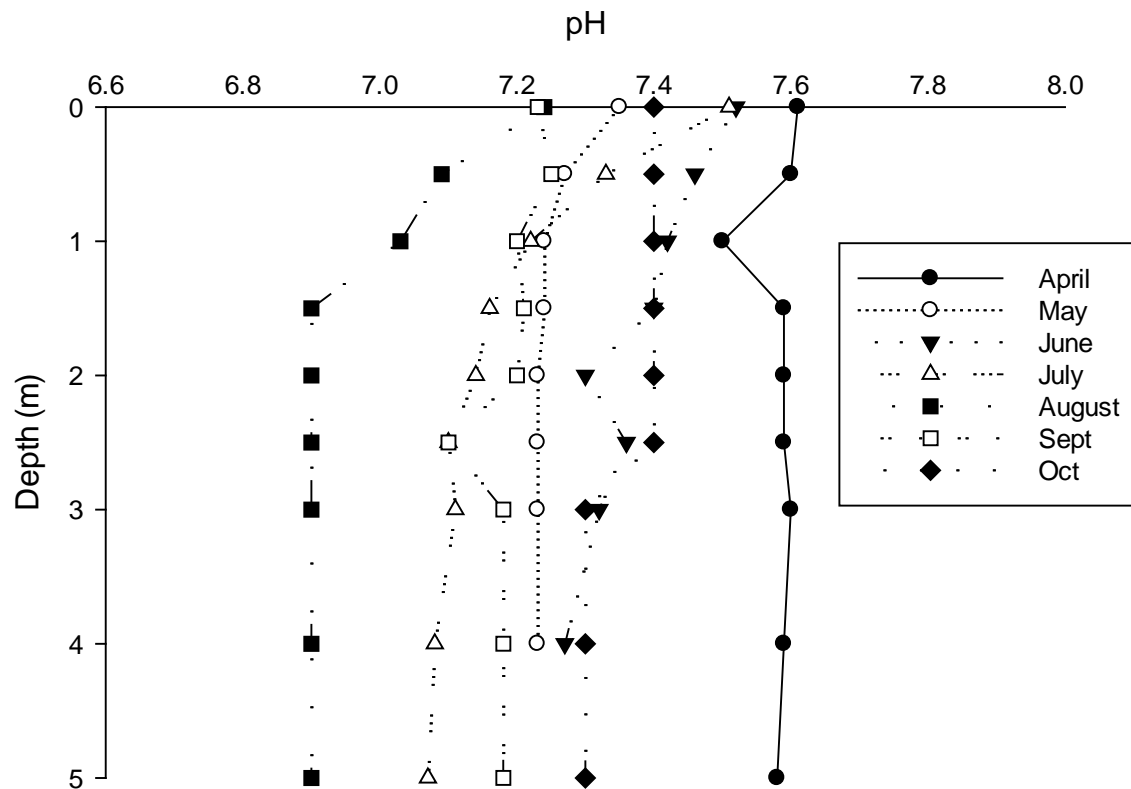


Figure 1.19. Toler Bridge (Riverine) pH measures over study period (2022)

Seasonal Analysis

The pH at this station is strongly influenced by water flow and reflects the chemical constituents in the water rather than phytoplankton productivity as it does at other stations. Water movement may push water with higher pH readings into this area from LVL but more likely it is driven from the mix of Pigg River and SML tailwaters. While phytoplankton productivity may be lower, pH can remain elevated until acid – base chemistry equilibrates.

Comparisons Across Years

The pH at this station can exceed a pH of 8 during the summer months. It is hard to pinpoint the cause, as these higher readings do not correlate well with observed Chlorophyll *a* concentrations. Without knowledge of pH in SML or the exact movement of water between the two reservoirs it is difficult to predict this pattern. Nevertheless, in all instances pH elevation is lower than observed downstream in the lake where readings may exceed 9.

ORP

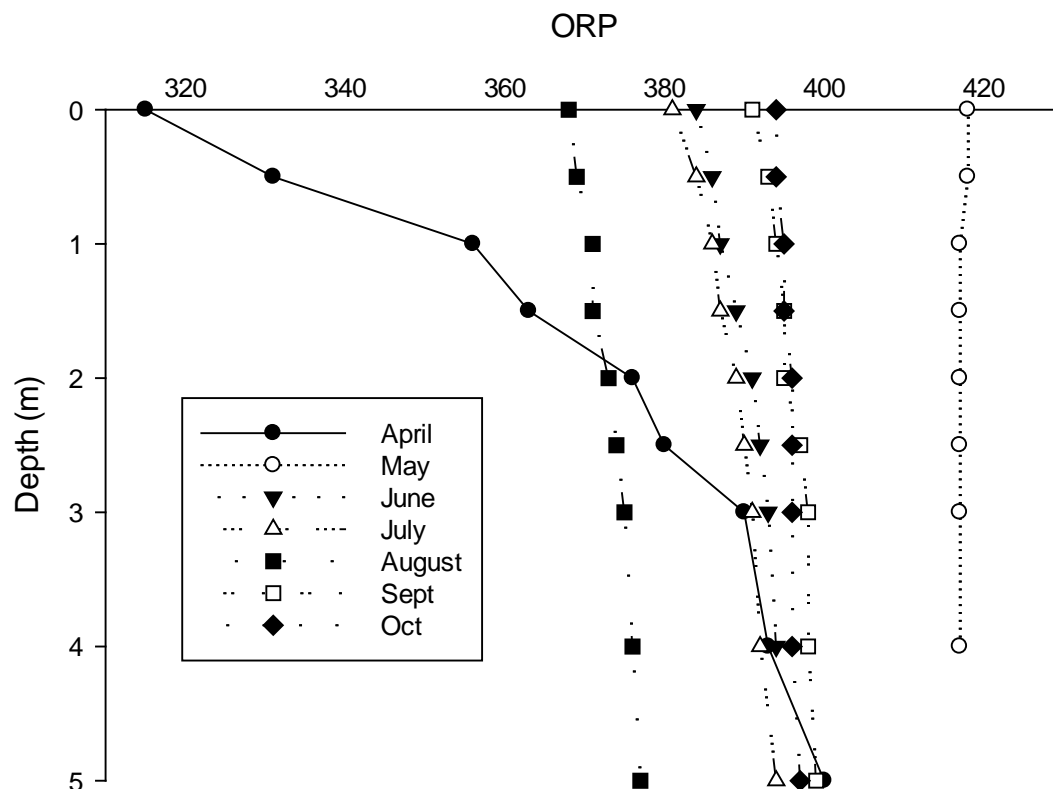


Figure 1.20. Toler Bridge (Riverine) ORP (mV) measures over study period (2022)

Seasonal Analysis

The ORP measures in this section of the reservoir do not provide any new interpretation between stations. Importantly, we do not observe reductions in ORP here creating concerns for reduced rather than oxidized conditions.

Comparisons Across Years

ORP is generally between 250 – 500 mV at this station. Some exceptions to this pattern have occurred but return to this range in the following season. ORP remains in a favorable range for the reservoir.

Turbidity

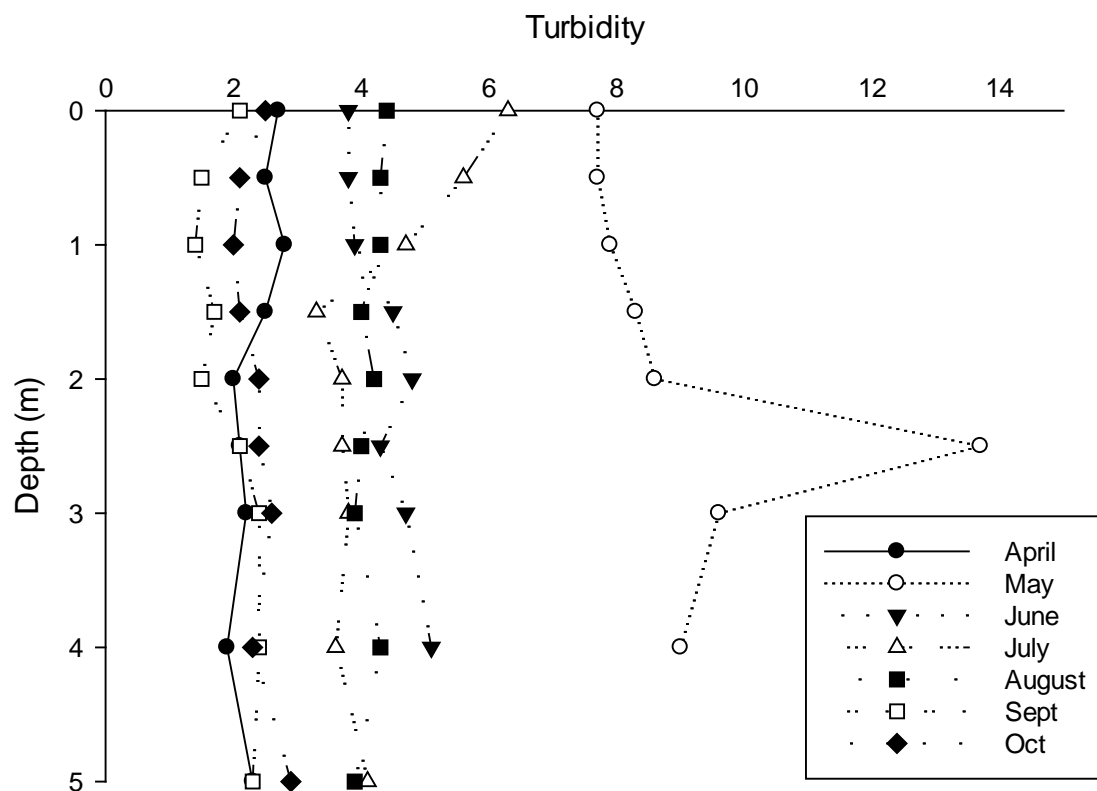


Figure 1.21. Toler Bridge (Riverine) Turbidity (NTU) measures over study period (2022)

Seasonal Analysis

Turbidity observations at this station impact the entire reservoir. We did not observe any extreme turbidity events during 2021. The increase in June Chlorophyll a was not a

turbidity increasing event, which suggests that it was driven by dissolved nutrients entering the lake from the Pigg River.

Comparisons Across Years

Turbidity reveals storm events that impact the reservoir at this station. At times when the water is dominated by SML release or low Pigg River flow turbidity is low. Often below 20 NTU. Various storm events elevate turbidity above 50 NTU and very strong storms above 100 NTU.

Other Parameters Measured

Table 1.29 Other parameters measured over study period (2022). Dates represent sampling of both the volunteers and university. First Column represents each parameter measured along with units of measure.

	29-Apr	31-May	15-Jun	29-Jun	14-Jul	28-Jul	12-Aug	29-Aug	28-Sept	28-Oct
Time	2:50 PM	1:25 PM	10:30	2:05 PM	10:20	12:52 PM	10:17	12:28 PM	2:00 PM	4:24 PM
Secchi (M)	2.4	1.25	1.1	1.6	1	1.1	1.3	1.6	1.8	1.9
TP Surface (PPM)	0.118	0.092	0.045	0.07	0.159	0.219	0.179	0.198	0.032	0.032
TP 8 (3) Meters (PPM)										
Integrate Chl a (PPB)	4.00	5.06		7.06		7.91		6.10	3.61	3.70
TSI S	47	57	59	53	60	59	56	53	52	51
TSI TP	69	66	56	62	73	78	75	77	52	52
TSI CHL	44	46		50		51		48	43	43
TSI AVG	54	56	57	55	67	62	66	59	49	49
Daphnia	0.05	0.00		0.45		0.30		0.00	0.00	0.00
Bosmina	5.26	2.01		0.30		3.64		1.01	1.42	0.81
Diaptomus	0.05	0.12		1.16		0.10		0.00	0.00	0.20
Cyclops	0.35	0.12		0.05		0.71		0.10	0.00	0.20
Nauplii	0.40	0.12		0.05		0.81		0.40	0.30	0.20
<i>Cerodaphnia</i>	0.00	0.12		0.00		0.00		0.00	0.00	0.00
<i>Diaphanosoma</i>	0.00	0.24		0.61		0.51		0.10	0.10	0.20
<i>Chydorus</i>	0.00	0.00		0.00		0.00		0.00	0.00	0.00
<i>E. coli</i> MPN/100ml	8.50	172.30	6.3	8.6	14.6	111.20	8.6	5.00	7.4	5.20

1.3.1.7 Pigg River



Photograph of Pigg River taken by Jade Woll.

Table 1.31. Pigg River other parameters measured over study period (2022). Measures are integrative throughout the entire water column. Profile data located in the appendix.

	29-Apr	31-May	15-Jun	29-Jun	14-Jul	28-Jul	12-Aug	29-Aug	28-Sept	26-Oct
Time	3:07 PM	1:40 PM	10:40 AM	2:18 PM	10:30 AM	12:59 PM	10:25 AM	12:45 PM	14:03	4:36 PM
Temp C	18	24.6		26.88		26.8		26.3	20	13.1
Conductivity (ms/cm)	0.078	0.071		0.09		0.09		0.119	0.11	0.089
DO mg/L	8.28	7.3		8.14		6.89		6	7.89	9.9
DO %	89.9	88.9		103.4		88.5		76.1	88.1	97.6
pH	7.4	7.4		7.33		7.07		6.96	7.36	7.4
ORP	428	411		413		404		402	412	
Turbidity NTU	7.7	34.5		27.7		14.6		8.7	10.8	7.7
Chlorophyll a ug/L	6.4	3.3		8.3		4.7		5.5	7	3.2
Secchi (M)	1.00	0.50	0.5	0.75	0.3	0.60	0.6	0.90	0.90	1.20
TP Surface (PPM)	0.063	0.061	0.052	0.401	0.271	0.250	0.64	0.031	0.074	0.120
TSI S	60	70	70	64	77	67	67	62	62	57
TSI TP	61	60	58	87	81	80	93	51	63	70
TSI AVG	60	65	64	75	79	74	80	56	62	63
<i>E. coli</i> cfu/100ml	27.90	733.85	93.2	52	150	275.50		29.30	47.90	75.40

1.3.1.8 Smith Mountain Lake Tail Waters

Table 1.32. Smith Mountain Lake Tail Waters other parameters measured over study period (2022). Measures are at the surface.

	29-Apr	31-May	29-Jun	28-Jul	29-Aug	28-Sept	26-Oct
Time	3:20 PM	1:55 PM	2:30 PM	1:11 PM	12:55 PM	14:16	4:48 PM
Temp C	11.8	15.6	21.07	20.6	21.6	21.2	18.3
Conductivity (ms/cm)	0.185	0.184	0.178	0.182	0.183	0.189	0.184
DO mg/L	8.28	8.14	7.25	5.53	4.16	5.45	7.7
DO %	89.9	83.6	82.7	62.9	48.1	62.4	85
pH	7.4	7.4	7.26	7.05	6.98	7.3	7.44
ORP	428	463	417	420	431	437	450
Turbidity NTU	0.6	0.8	4.1	3	2.6	1.4	1.2
Chlorophyll a ug/L	2.1	1.3	5.3	2.3	2.9	2.2	8.4
Secchi (M)	5.50	3.50	1.7	2.1	2.40	2.40	2.75
TP Surface (PPM)	0.081	0.038	0.083	0.050	0.026	0.01	0.003
TSI S	35	42	52	49	47	47	45
TSI TP	64	54	64	58	49	38	28
TSI AVG	50	48	58	53	48	43	37
<i>E. coli</i> cfu/100ml	42.00	10.90	8.5	24.60	6.10	3.00	9.80

Section 2: Lake-Wide Trends

The purpose of this section is to look at the functioning of the reservoir and establish trends. These trends are important to give a trajectory of lake health and allow us to manage the lake for optimum water quality. These trends are based on collected water quality parameters over the entirety of this study, and their compilation into trophic state indices (TSI) and other predictive indicators help track the health of the lake. The use of these indices allows ease of comparison among known parameters for lake and reservoir function and facilitates the translation of raw data into a useable management tool. As with any index, confounding parameters may, at times, reduce the value of a given index necessitating alternate interpretations and hypotheses. However, within the science of limnology (the study of lakes), use of indices is widespread and offers good explanations. There are 3 main categories under TSI; eutrophic, mesotrophic, and oligotrophic. Eutrophic lakes are highly productive and concentrated in nutrients; mesotrophic lakes experience moderate productivity and have lower nutrient levels; oligotrophic lakes have little productivity and low nutrient levels. When the TSI value is greater than 51, lakes are classified as eutrophic. Eutrophic lakes can be plagued by low water clarity, loss of oxygen in the hypolimnion, high sediment turbidity and high nutrient levels. This stimulates an abundance of algae growth and even noxious forms throughout the summer months. Excessive eutrophication is to be avoided. A TSI > 61 is considered excessive. Water has more clarity in oligotrophic and mesotrophic lakes, low concentrations of algae and typically an abundance of oxygen throughout the water. This is a desired state in management of a lake.

Three additional areas of inquiry were launched based on the analysis of the data. First and very concerning is the changes observed in water quality emanating from the Pigg River. Precipitation patterns suggest we are entering a period where storm intensity and magnitude will increase. These changes coupled with existing land use appear to be forcing rapid change on the river water entering Leesville Lake. This is a concern that needs our greatest attention.

Two other trends are examined in this year's analysis due to the need to understand the impact in the reservoir. First is the predictions of mid-summer Chlorophyll *a* peaks. This season mid-summer peaks reached over 50 ug/L and are of concern. What might be the possible mechanisms contributing to this are explored. The other issue is oxygen loss in reservoirs and how this is predictive through time. What is driving this phenomenon from August through October, often to levels that are very harmful to aquatic life?



2.1 Analysis of Trophic State⁴

In this analysis, trends of all the measurable trophic state indices (TSI) are evaluated for all of the sampling data collected during this project. The usefulness of this is many-fold. First, we can examine several parameters that are used to predict TSI or lake health (Carlson 1977). The use of multiple parameters always strengthens any scientific investigation. Second, each parameter measured provides a predictor based on differing influences within the reservoir. Secchi depth is influenced by both sediment input and phytoplankton growth, whereas total phosphorus (TP) simply reflects the concentrations of this limiting nutrient but also dynamics within the reservoir. Additionally, Chlorophyll *a* concentrations reflect use of TP for phytoplankton growth within the limitations of shading (sediment inputs) and grazing by zooplankton (*Daphnia* abundance). It is interesting and useful to note how each parameter (Secchi Depth, TP and Chlorophyll *a*) differ in predictive power. While each parameter differs, often the predictions are within similar ranges. We are also interested in trends over time. What are the trends we observe in the reservoir? How is the reservoir changing over time? These observations will guide our management decisions and conclusions as well as future work.

It is important to understand sediment input in this reservoir and how it may influence trophic state. Within reservoirs of the southeastern United States, sediment input constantly occurs. While sediment consists of many forms, clay is the predominate component in this region. Clay is problematic for many reasons. First, it stays in suspension for extended periods of time. Secondly, it binds with phosphorus helping to transfer this nutrient into reservoirs and depositing it into the sediments causing long term problems. It also competes for phosphorus and shades select species of phytoplankton. While lowering phytoplankton growth can be beneficial, clay often limits desirable forms of plankton and replacing them with undesirable species.

⁴ *Photograph of Leesville Lake taken by Jade Woll*

In this analysis we use the three main stations in the reservoir for ease of comparison: Dam, MM6 and Toler Bridge. This demonstrates the spatial pattern from the headwaters to the dam. Reservoirs are typically most productive (eutrophic) in the headwaters with decreasing productivity near the dam. Mid stations in a reservoir (MM6 for Leesville Lake) reflect an area of mixing. This is the portion of the reservoir where the river flow (area higher in sediment and nutrients with greater input of water and water movement) meets the lake portions (area low in sediment and nutrients with very slow water movement). This area can be highly productive due to a multitude of factors.

Leesville Lake is unique due to headwater input from Smith Mountain Lake (a slightly eutrophic reservoir) and the Pigg River (a highly timbered and agricultural developed watershed). This unique combination has a very profound impact on water quality. This trophic state analysis (Section 2.1), precipitation and Pigg River inputs (Section 2.2), predictions of mid-summer chlorophyll peak (Section 2.3) and SML oxygen loss (Section 2.4) explore this unique relationship in the context of Leesville Lake water quality. We try to quantify these inputs and speculate on impacts. This leads to our management recommendations.

Secchi Depth TSI

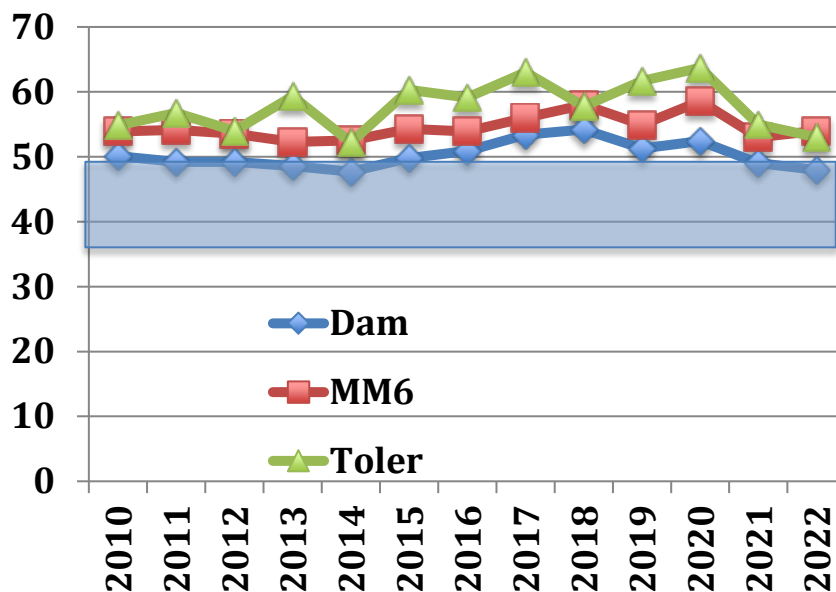


Figure 2.1. Trophic State Index (TSI) based upon Secchi disk (meters) measurements in Leesville Lake from 2010-2022. Y-axis reflects the calculated TSI for each of the three primary sampling stations throughout the reservoir. The shaded box represents the mesotrophic range for TSI where below this range is oligotrophic conditions and above represents eutrophic conditions.

Analysis

In 2022, predictions of trophic state using Secchi depth suggested LVL water clarity continued to improve (Figure 2.1). The reservoir continues to be eutrophic however the station at the dam continued to improve in clarity and measured as mesotrophic for the first time since 2014. This is an encouraging trend based on clarity.

Comparing this trend from the headwaters (Toler Bridge) through the Dam we see a very distinct pattern. Toler Bridge is expected to have the most eutrophic waters based on Secchi calculations with increasing clarity and improved TSI moving down lake to the dam. But this trend is variable and driven by two competing factors. Water from SML tail water release can be extremely clear even to the point of oligotrophic. Pigg River on the other hand can be very turbid to the point of hypereutrophy. Often what we see here is the predominance of tail release over Pigg River inputs. It is clear in 2022 that tailwaters were a strong influence on water quality clarity in the upper portion of the reservoir.

Total Phosphorous TSI

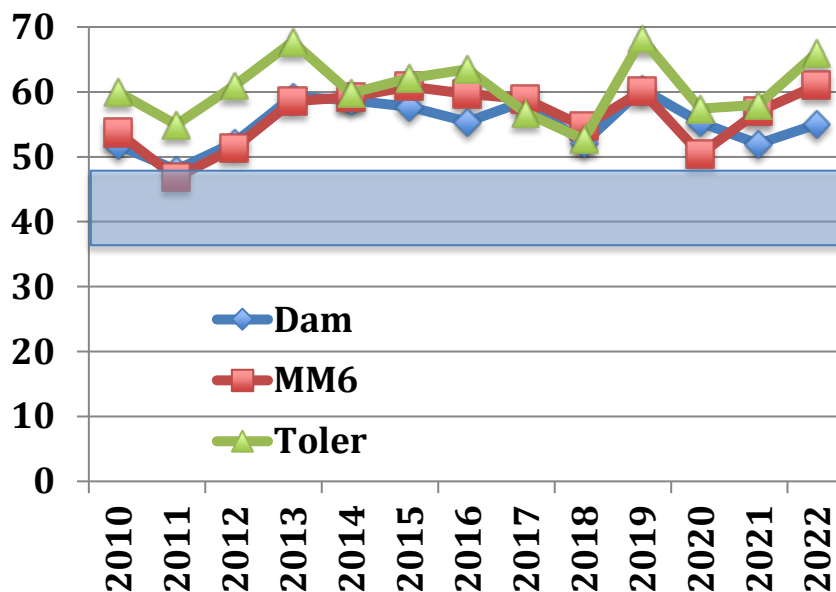


Figure 2.2. Same as Figure 2.1 but TSI based on Total Phosphorus (TP).

Analysis

Interesting that, based upon TP, the reservoir TSI trends back and forth along a eutrophic mean. This index does show greater variability and is dependent upon a more complex analysis. More importantly, this analysis suggests that the nutrients are entering into the lake possibly independent of turbidity. Further, this may be a direct result of a combination of low oxygenated water from SML release combining with Pigg

River inputs associated with turbidity. In this scenario, phosphorus would be released in the anoxic hypolimnion. **So, while water with high clarity is delivered to LVL, the key feature may be the anoxia that is exacerbated and causing a greater release of phosphorus. This is an extremely important observation with management implications.**

Chlorophyll *a* TSI

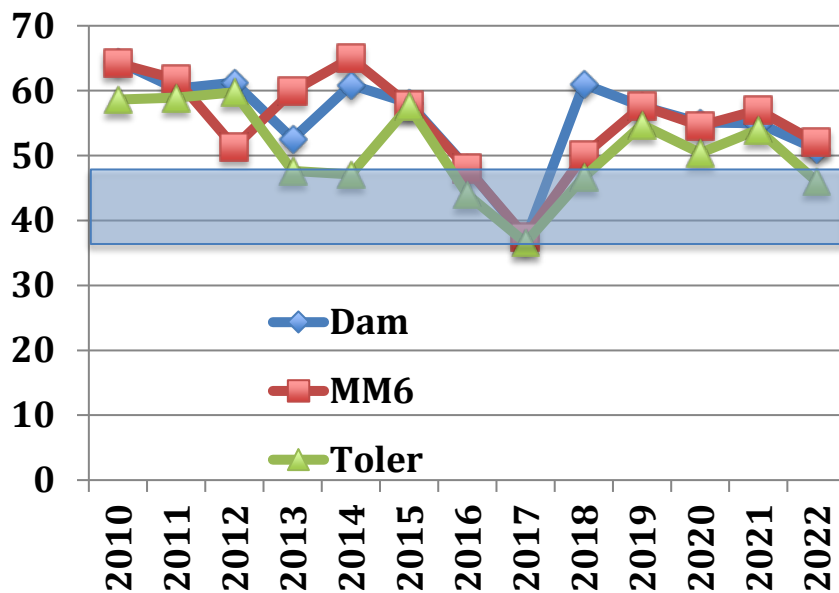


Figure 2.3. Same as Figure 2.1 but TSI is based on Chlorophyll *a*.

Analysis

Trophic state based upon Chlorophyll *a* remained stable in 2022. TSI Chlorophyll *a* (Figure 2.3) continues to suggest the lake is slightly eutrophic and regardless of the other changes in TSI, this measure remains relatively unchanged. This is a good result and suggests the lake is very resistant to change even as nutrient concentrations increase throughout the reservoir. One issue of concern with this interpretation is one of time lags. While we did not see increases in 2022, phosphorus is very pervasive, and the loss of oxygen continues throughout the reservoir suggesting conditions may worsen in the future.

TSI Average

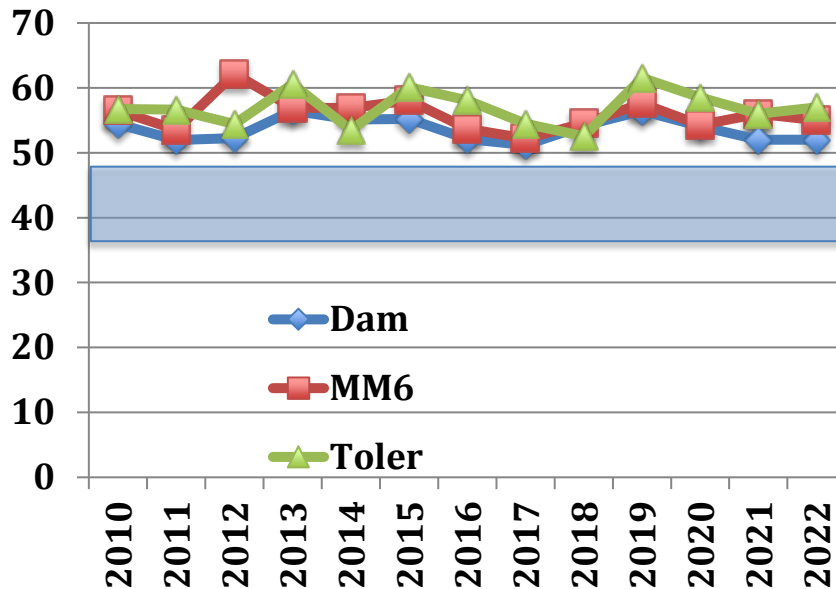


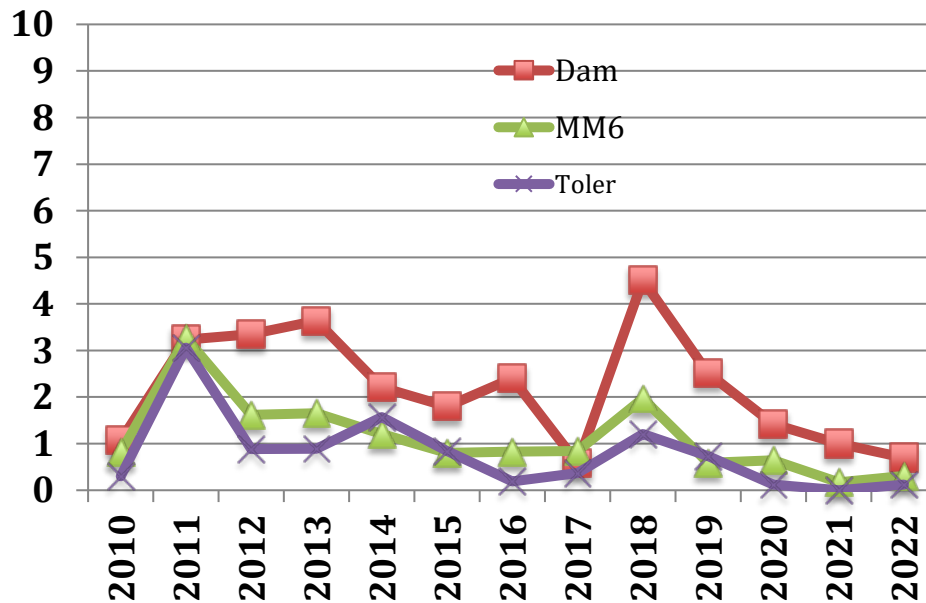
Figure 2.4. Same as Figure 2.1 but TSI presented is the average of TSI for all parameters evaluated (Secchi Depth, Total Phosphorous, Chlorophyll a).

Analysis

Averaging trophic state indices has value in determining if the lake is trending in a particular direction. Based upon multiple parameters the reservoir continues to be amazingly steady. The lake remains mildly eutrophic with some fluctuation but meeting desired uses. While we are observing some worsening of water quality entering the reservoir from the Pigg River, these symptoms are not expressed in the overall TSI or at the Toler Bridge station. Often, time lags are associated with changes thus it is not surprising these changes are not yet reflected in the overall TSI. It is important to note that we are not observing time lags at this point and can be confident the water quality in the reservoir is stable.

Daphnia Productivity

Figure 2.5. Average *Daphnia* concentrations in Leesville Lake from 2010-2022. Numbers on y-axis represent *Daphnia*/liter.



Analysis

The abundance of *Daphnia* in the reservoir not only impacts the population of phytoplankton through grazing, but also impacts the influence of fisheries on water quality. Implications of this are two-fold. First, lower populations reduce the grazing pressure on phytoplankton. For 2022, we again recorded one of the lowest concentrations of *Daphnia* on record in this study. It is now becoming clear that in Leesville Lake, *Daphnia* populations respond to phytoplankton abundance *rather than* graze and control phytoplankton populations.

Theoretically, food chain construction in a reservoir suggests predatory fish regulate zooplankton by eating fish that regulate zooplankton which in turn control phytoplankton that are stimulated by nutrients such as phosphorus. We again found *Daphnia* with long spines and elongated helmet projections. The implications of this are clear. Invertebrate predation by *Leptodora* appears to be dominate in the reservoir regulating the populations of *Daphnia*. This suggests that plantivorous fish populations are low in turn enhancing the populations of both *Leptodora* and *Daphnia*. Phytoplankton are not excessive in the reservoir and do not appear to be controlled by *Daphnia* grazing.

One additional analysis was undertaken again. Based on the literature (Sobolewski 2016), lakes in catchments with greater than 60% agricultural land use exhibit poorer water quality as measured by the following system than those in less agricultural dominated watersheds. Greater than 60% agricultural land use in the watershed had lakes with 0-5 on the following scale. Lakes in catchments with agricultural land use less than 60% (60-35) tended to have much better water quality (8-10).

Table 2.1.1 – measures of water quality for lake from around the world. Leesville Lake water quality is quite good based on this scale.

Pollutant Measures	Low	Medium	High	LVL 2021	LVL 2022
Secchi Depth (m)	>2.10	1.15-2.10	<1.15	2.15 = 2 pts.	2.33 = 2 pts.
Conductivity (uS/cm)	<289	289-402	>402	135 = 2 pts	168 = 2pts.
Total Nitrogen (mg/m3)	<1.04	1.04-1.67	>1.67	Not Measured	0.12 = 2 pts.
Total Phosphorus (mg/m3)	<0.043	0.043-0.08	>0.08	0.04 = 2 pts	0.06 = 1 pt.
Chl a (ug/L)	<12.5	12.5-31.5	>31.5	13.9 = 1 pt	8.23 = 2 pts
Points	2	1	0	7/8 points	9/10 points

The combination of lower than 60% agriculture in the watershed and influence of SML tailwater release keep Leesville Lake in the good zone of water quality (Table 2.1). Leesville Lake scored 9 points in the table as we were able to include nitrogen which puts it into the excellent range. These are averages and suggest the water quality is excellent yet at times when the lake is dominated by either Pigg River input or SML tailwater release these values can be skewed toward lower levels of quality. This situation must be continually monitored to determine if conditions are progressing toward these conditions.

2.2 Statistical Analysis

We conducted a Partial Least Squares Analysis to determine how water quality at main stem stations throughout LVL respond both on a spatial scale (from Dam up through Pigg River and SML Tail Water Release) and seasonally (April – October). Data was gathered from April 2015 through October 2022 then analyzed for each month. Hence, each analysis for each month represents data collected during that month from 2015-2022 for each station.

For this analysis, four parameters were selected. These parameters are the most responsive in the lake to pollution and change in water quality. We used surface measures of Dissolved Oxygen % and Turbidity and Total Phosphorus. The additional parameter was Secchi Depth. Tests were run comparing all parameters against the observations at LVL dam. Hence, we are asking the question – what stations using the four selected parameters – are most similar to LVL dam at each of the monitored months. The data is displayed as correlation showing how the lake is structured. Therefore, a stronger correlation (closer to 1) suggests the water quality is more closely associated with a station.

Table 2.2.1 – Correlation matrix for parameters related to water quality at LVL Dam. Data represents correlation between the LVL Dam and associated stations at each month. Each correlation represents 160 observations over the period of time from 2015-2022.

Month	Tailwater	Pigg	Toler	MM6
April	0.895	0.934	0.978	0.991
May	0.929	0.856	0.856	0.966
June	0.860	0.734	0.821	0.930
July	0.879	0.940	0.934	0.993
August	0.824	0.855	0.878	0.995
Sept.	0.856	0.464	0.723	0.987
Oct.	0.975	0.279	0.649	0.953

Table 2.2.2 - Correlation matrix for parameters related to water quality at SML Tail Water. Data represents correlation between the Tail Water and associated stations at each month. Each correlation represents 160 observations over the period of time from 2015-2022.

Month	Pigg	Toler	MM6	LVL Dam
April	0.876	0.905	0.901	0.895
May	0.931	0.908	0.960	0.929
June	0.932	0.986	0.938	0.860
July	0.961	0.975	0.913	0.879
August	0.923	0.969	0.849	0.824
Sept.	0.608	0.864	0.861	0.856

Oct.	0.428	0.768	0.957	0.975
------	-------	-------	-------	-------

This analysis is very insightful on the operation of the SML dam and water quality in LVL. As presented in Table 1, water quality at LVL dam is most closely aligned with MM6. This is expected as the stations are most closely aligned in space in the reservoir. More interesting is the close alignment with SML tail release. This suggests the strong regulating impact this release has on LVL and the close functional alliance each dam operates under. Hence, both SML and LVL dams appear very close in water quality. The other observation is the strong deviation away from Pigg River and Toler Bridge station in September and October. This requires a series of interpretations to understand.

If the deviation from Pigg River was due to reservoir or lacustrine processes this would strongly occur during the summer months (June-August). This is when the reservoir is strongly stratified and reservoir processes exert the greatest influence on water quality. Correlations are still quite strong between all stations through August. It is in September and October as to when the strong deviations occur. Water quality at LVL dam is very different than Pigg River and at Toler Bridge. All of these correlations strongly suggest SML Tailwaters and hence SML water quality strongly drive overall water quality in LVL. It is in September and October when we see the very low dissolved oxygen and poor water quality in the upper portions of the LVL and the strong difference with LVL dam.

Analyzing further, SML tailwater correlations weaken with Pigg River and Toler late in the season (Table 2) similar to LVL dam (Table 1). This strengthens the argument that SML operations are in strong control of LVL water quality. There are several concerning aspects to this conclusion. First, the very low dissolved oxygen concentrations from SML tailwater late in the season degrades the upper portion of LVL. This problem is not being controlled and may be getting worse as hydrology changes throughout the area. Secondly, the low dissolved oxygen concentrations late in the season appear to increase the availability of total phosphorus. This is very concerning as this will stimulate phytoplankton (measured as chlorophyll *a*) and worsen the overall water quality in LVL. To date, LVL has been very resilient to such changes but we are observing rising Trophic State Index (TSI) due to increasing total phosphorus concentrations. This will need further analysis and monitoring.

Section 3: Conclusions and Management Implications

Water quality indicators continue to suggest Leesville Lake is mildly eutrophic and continues to be stable around this condition. It is important to state that while some water quality indicators are worsening Leesville Lake appears very resistant to those inputs and has remained in good condition (Figure 2.4). Leesville Lake is maintaining a constant TSI index between 50-60. All indicators in 2022 suggest this condition of the reservoir should continue into the foreseeable future. While it is always the aim to improve the condition of the resource being monitored, this result is encouraging and

perhaps an improvement in light of the problems surrounding the lake throughout the watershed.

Current trends continue to raise concern over inputs into LVL at the headwaters. In this report's statistical analysis, good evidence is presented suggesting LVL is strongly controlled by SML tail water release and hence operations at SML dam. It is also concluded that tail water release, low dissolved oxygen and nutrient inputs from Pigg River are the greatest threats. Continued work on Pigg River will help us understand the depth of this problem and how to exhibit some managerial control. Closer monitoring of Smith Mountain Lake hypolimnetic oxygen loss is warranted and close work with AEP is the best option to get this problem under control.

Overall, we make the following conclusions from our study of the reservoir:

1. Leesville Lake remains slightly eutrophic lake. It has maintained this status throughout the monitoring period of study (2010-2022) and this result is currently stable and not expected to worsen or improve in the foreseeable future.
2. The individual TSI parameters exhibit greater variability providing insight into reservoir operation and external input driving water quality.
3. TSI Secchi suggest increasing clarity as a trend in LVL. This is believed to be the result of increased influence from SML tail water release. TSI phosphorus and TSI Chlorophyll tend to show an upward trend and this is a concern.
4. Leesville Lake behaves as a pump storage reservoir with headwaters impacted by tail release from the upper reservoir and this impact is seen throughout the reservoir. Pumping operations have a very strong impact on LVL water quality.
5. The influence of SML tail water throughout the reservoir is generally a positive result as hypolimnion in SML contains water that is very clear and approaching oligotrophic conditions. However, oxygen depletion is very problematic late in the season (Sept-Oct.) and seems to be worsening. Low dissolved oxygen (<5 mg/L) persists in tail water release at the end of the season. These low oxygen conditions can be detected down through the reservoir past the station at Toler Bridge.
6. This oxygen loss when coupled with the high nutrient input from the Pigg River is cause greater eutrophication in LVL due to phosphorus release. This trend is worsening although not being expressed as Chlorophyll a biomass yet. Time lags are a concern.
7. In the forebay of SML, water below a depth of 5 contains less than 5 mg/L dissolved oxygen and reaches 0 mg/L between 30-40 meters of depth. Total average phosphorus in the reservoir exceeded 40 ppb for the first time in last 10 years and Secchi depth remained below 2 meters for third year in a row. While some areas in the dam area of the lake are oligotrophic water near the dam is mesotrophic.

Management recommendations:

5. It is now better understood that SML tail release controls water quality in LVL. The two greatest threats to water quality in LVL are the high nutrient inputs from Pigg River and low oxygen levels of SML release late in the season. These two phenomena work together to compound the problem.
6. Monitoring of the Pigg River by the Leesville Lake Association's Water Quality Committee must continue (see separate report of these findings). This is the only current study in this watershed and water quality of the Pigg River is critical to the health of LVL. This river must be studied and monitored to help make beneficial management decisions for Leesville Lake. Every effort needs to be extended to understand nutrient pollution and control it.
7. Land use and deleterious inputs in all watersheds (Pigg River, Blackwater and Roanoke) need to be addressed. While Pigg River Watershed is of the greatest concern of influence in Leesville Lake Water Quality our studies suggest that deteriorating water quality from SML may be of greater concern due to low oxygen tail release during the later part of summer.
8. It is clear from our water monitoring of Leesville Lake and data collected at the tail release that water does not meet permit standards late in the season. The following must be noted and addressed by AEP:
 - c. License requirements associated with the Smith Mountain Hydroelectric Project (Project) require the licensee, Appalachian Power Company (Appalachian), to implement a Water Quality Monitoring Plan (Plan) as part of license Article 405. The order approving the Plan was issued on April 15, 2011.
 - d. Develop and file, in accordance with the requirements of Article 401(a) for Condition F.4 found in Part I of the Virginia Department of Environmental Quality's (Virginia DEQ) water quality certification (WQC), a feasibility study and plan for physical or mechanical alterations of water release procedures, developed in consultation with the Water Quality Technical Review Committee (WQTRC1), to address violations of water quality standards for DO caused by turbine discharge from Smith Mountain Lake, should the operating practices employed prove insufficient at improving DO levels in Smith Mountain's turbine discharge.

References

- Burns, N. 1995. Using hypolimnetic dissolved oxygen depletion rates for monitoring lakes. N. Z. J. Mar. Freshwat. Res. 29:1-11.
- Carigan, R. and D. Lean. 1991. Regeneration of dissolved substances in a seasonally anoxic lake: The relative importance of processes occurring in the water column and in sediments. Limnology and Oceanography. 36:683-707.

Carlson, R. 1977. A trophic state index for lakes. *Limnology and Oceanography*. 22:361-369.

Dillon, P., and F. Rigler. 1974. The phosphorus-chlorophyll relationships in lakes. *Limnology and Oceanography*. 19:767-773.

Federal Energy Regulatory Commission. Office of Energy Projects. (2009, August). *Final Environmental Impact Statement for Hydropower License, Smith Mountain Pumped Storage Project, FERC Project Number 2210 Virginia*. Retrieved from <http://www.smithmtn.com/Project%20Relicensing/FinalEISAugust2009.pdf>

Federal Energy Regulatory Commission. (2009, December 15). United States of America 129 FERC ¶ 62,201, Federal Energy Regulatory Commission, Appalachian Power Company Project No. 2210-169, Order Issuing New License. Retrieved from <http://www.smithmtn.com/>

Gregory, K. 2019. Human influence on the morphological adjustment of river channels: The evolution of pertinent concepts in river science. *River Res. Applic.* 35:1097-1106.

Heck, D., D. Johnson, C. Love, B. Pohlad, M. Puccio and C. Thomas. 2019. Smith Mountain Lake Water Quality Monitoring Program. Ferrum College, Ferrum Virginia.

Kleinschmidt, 2020. Water quality monitoring program and dissolved oxygen enhancement evaluation. Smith Mountain Hydroelectric Project. FERC No. 2210.

Leesville Lake Association. *About the Lake*. Retrieved from <http://www.leesvillelake.org/AboutLake.htm>

Leesville Lake Association. (2009, July 11). *Minutes, Leesville Lake Association, July 11, 2009, Annual General Membership Meeting*. Retrieved from <http://www.leesvillelake.org/Minutes.htm>

Leesville Lake Association. (2008, April 10). *Minutes, Leesville Lake Association, April 10, 2008, Quarterly General Meeting*. Retrieved from <http://www.leesvillelake.org/Minutes.htm>

Leesville Lake Association. (2003, September 25). *Minutes, Leesville Lake Association, September 25, 2003*. Retrieved from <http://www.leesvillelake.org/Minutes.htm>

Leesville Lake Association. *Articles of Incorporation of Leesville Lake Association, Inc.* Retrieved from <http://www.leesvillelake.org/Documents/ArticlesOfInc.htm>

Livingstone, D. and D. Imboden. 1996. The prediction of hypolimnetic oxygen profiles: A plea for a deductive approach. *Can. J. Fish. Aquatic Sci.* 53:924-932.

Lobue, Michael A. (2010, January). *Leesville Lake Water Quality Monitoring Program 2009 Report*. Leesville Lake Association.

Sobolewski, W. 2016. Effect of Agricultural Land Use on the Water Quality of Polish Lakes: a Regional Approach. *Pol. J. Environ. Stud.* 25:2705-2710.

Steinsberger, T., R. Schwefel, A. Wuest and B. Muller. 2020. Hypolimnetic oxygen depletion rates in deep lakes; Effects of trophic state and organic matter accumulation. *Limnology and Oceanography.* 65:3128-3138.

The Louis Berger Group, Inc. (2009, February). *Smith Mountain Project Socioeconomics Study Phase II Report*. Retrieved from <http://www.smithmtn.com/>

The Louis Berger Group, Inc. (2003, August 29). *Smith Mountain Pumped Storage Project FERC No. 2210 Shoreline Management Plan*. Retrieved from <http://www.smithmtn.com/shorelinemanagement/Plan/pdf/Final/FinalSMP.pdf>

Virginia Department of Environmental Quality (2007). *DEQ's 2007 Water Quality Monitoring Strategy*. Retrieved from <http://www.deq.state.va.us/watermonitoring/monstrat.html>
Virginia Department of Game and Inland Fisheries. (2002). *Leesville Reservoir 2002 Management Report*. Retrieved from <http://www.dgif.virginia.gov/fishing/waterbodies/reports/2002%20Leesville%20Reservoir.pdf>

Virginia Department of Game and Inland Fisheries. (2008). *Leesville Reservoir 2008*. Retrieved from <http://www.dgif.virginia.gov/fishing/waterbodies/reports/2008%20Leesville%20Biologist%20Report.pdf>

Virginia Tech. Department of Biological Systems Engineering. (2006, April). *Bacteria Total Maximum Daily Load Development for Pigg River, Snow Creek, Story Creek, and Old Womans Creek*. Retrieved from <http://www.deq.virginia.gov/tmdl/apptmdls/roankrvr/piggec.pdf>.

Yuan, L., and J. Jones. 2020. Rethinking phosphorus-chlorophyll relationships in lakes. *Limnology and Oceanography.* 65:1847-1857.

Appendix A

Background of Water Quality Program

For many years, the Virginia Department of Environmental Quality (DEQ) monitored Leesville Lake water quality either annually or biannually. Beginning in 2006, DEQ placed Leesville Lake on a six-year rotation for water monitoring. However, DEQ collected water quality data in 2009 and 2010.

In an effort to supplement DEQ water quality monitoring, the Leesville Lake Association (LLA) began a Citizen Water Quality Monitoring Program in April 2007. Citizen volunteers monitored bacteria, Secchi depth, temperature, dissolved oxygen (DO), pH, and conductivity. LLA outlined four goals for the program: (a) gain a greater understanding of the lake's water quality, (b) supplement the DEQ water quality monitoring, (c) increase the community's awareness of the importance of water quality, and (d) inform residents about harmful factors that damage water quality and age the lake (Lobue, 2010).

The Virginia DEQ provided LLA with a water quality monitoring probe to measure DO, temperature, and pH. With the DEQ Citizen Water Quality Monitoring Grant, LLA purchased Coliscan Easygel[®] test kits for *E. coli* testing along with Secchi discs and other necessary equipment (Lobue, 2010). Over the next three years, LLA published annual reports of the water quality test results. As part of the water quality monitoring plan required by its new license, Appalachian Power Company committed \$25,000 for a water quality monitoring program.

Under the Federal Power Act (FPA) and the U.S. Department of Energy Organization Act, the Federal Energy Regulatory Commission has the power to approve licenses for up to 50 years for the management of non-federal hydroelectric projects (FERC, 2009, p. ii). The Commission issued the first license for the Smith Mountain Pumped Storage Project to Appalachian Power on April 1, 1960 with a set expiration date of March 31, 2010 (FERC, 2009).

As part of its relicensing process, Appalachian Power was required by the Federal Energy Regulatory Commission to implement a Shoreline Management Plan (SMP). In July 2005, FERC approved a SMP proposed by Appalachian for the Smith Mountain Project. The purpose of this plan is *"to ensure the protection and enhancement of the project's recreational, environmental, cultural, and scenic resources and the project's primary function, the production of electricity."* (FERC, 2009, p. 22). The SMP works to preserve green space, wetlands, and wildlife habitats along the shoreline. Property owners may not remove vegetation within the project boundary unless they have received permission from Appalachian Power. The project boundary for Leesville Lake lies at the 620-foot contour elevation (LLA, 2009).

To renew their license, Appalachian Power Company (Appalachian Power), a unit of American Electric Power (AEP), submitted an application for a new license in March

2008. In August 2009, the Federal Energy Regulatory Commission issued a Final Environmental Impact Statement for the Smith Mountain Project relicensing. While reissuing, the Commission reviewed AEP's methods and proposals for "the protection, mitigation of damage to, and enhancement of fish and wildlife (including related spawning grounds and habitat), the protection of recreational opportunities, and the preservation of other aspects of environmental quality." (FERC, 2009, p. 1). In the final Environmental Impact Statement (EIS), FERC endorsed Appalachian Power's proposed \$25,000 annually to the LLA to support the on-going water quality monitoring program (FERC, 2009, p. 25). The Commission approved the new license, effective April 1, 2010.

FERC recommended a few modifications to Appalachian Power's *Water Quality Monitoring Plan* including a proposal to develop a lake water quality monitoring plan. FERC determined that the primary water quality issues for Smith Mountain and Leesville lakes arise from nutrients and bacteria. Rather than coming from the dams' operations, the nutrients and bacteria come from shoreline development and overall watershed development. In conclusion, FERC recommended the (a) continuation of water-quality monitoring for Smith Mountain Lake, (b) establishment of a water quality monitoring program for Leesville Lake, and (c) ensuring the future health of the lakes by monitoring lake quality to verify that any changes in operational strategy at the Smith Mountain project do not harm water quality.

In summary, a timeline of significant events is outlined below:

- April 1960: First license for Smith Mountain Project issued
- April 2007: Development of Leesville Lake Citizen Water Quality Monitoring Plan
- 2007-2009: LLA annually reports on water quality
- 2008: AEP proposed \$25,000 in 2010 to LLA for water quality monitoring plan
- August 2009: FERC issues a final EIS for Smith Mountain Project relicensing, recommending a water quality plan for Leesville Lake
- April 2010: AP's new license for Smith Mountain Project becomes effective
- June 2010: Lynchburg College begins water quality testing of Leesville Lake
- February 2011: Lynchburg College reports on 2010 water quality
- February 2012: Lynchburg College reports on 2011 water quality
- February 2013: Lynchburg College reports on 2012 water quality
- February 2014: Lynchburg College reports on 2013 water quality
- February 2015: Lynchburg College reports on 2014 water quality

Participants:

In August 2003, a group of Leesville Lake residents formed a non-profit 501(c)(3) corporation called the Leesville Lake Association. The association addresses the issues of debris, shoreline management, environmental and biological health, safety, future development, and fishing for Leesville Lake (LLA, 2003).

In 2007, the Department of Environmental Quality revised the Millennium 2000 Water Quality Monitoring Strategy. The Virginia DEQ maintains the "Water Quality Monitoring

and Assessment (WQMA) Program” with the ultimate goal to *“provide representative data that will permit the evaluation, restoration and protection of the quality of the Commonwealth’s waters at a level consistent with such multiple uses as prescribed by Federal and State laws (VDEQ, 2007).”*

LLA partnered with University of Lynchburg to establish the Water Quality Monitoring Plan. University of Lynchburg agreed to conduct the samplings and testing, and report results. LLA water monitoring volunteers for 2020 were: Tony Capuco, David Waterman and Kathleen Giangli.

For a description of Leesville Lake and communities, refer to Section 2 of Lynchburg College’s report titled *Leesville Lake 2010 Water Quality Monitoring* dated February 28, 2011.

Statement of Goals and Objectives

(Also stated in the 2010 and 2011 Leesville Lake Water Quality Monitoring Reports):

Goals and Objectives of the Leesville Lake Water Quality Monitoring Plan:

The Federal Energy Regulatory Commission recommended that a water quality plan for Leesville Lake be developed. In a collaborative approach, Leesville Lake Association and Lynchburg College developed a plan in February 2010 to continue and expand the testing and monitoring of water quality, to monitor nutrients and trophic status, and to supplement data collected by the Virginia Department of Environmental Quality in order to better understand the current state of Leesville Lake.

Leesville Lake Association

The objectives of the Leesville Lake Association, according to its Articles of Incorporation, are as follows (<http://www.leesvillelake.org>):

- ☐ Plan projects and studies that:
 - a. Monitor and protect the water quality of Leesville Lake
 - b. Contribute to the clean-up and preservation of the lake’s shorelines
 - c. Promote safe recreational use
 - d. Improve the condition of the surrounding land as a high-quality recreational and residential area
 - e. Maintain favorable water levels in Leesville Lake for the Smith Mountain Pumped Storage Hydro Project
- ☐ Educate to individuals, organizations, and the general public information concerning:
 - a. Water quality monitoring results
 - b. Management techniques and practices to preserve the environmental quality of Leesville Lake and its watersheds
 - c. Safe recreational activities

- d. Commercial and government activities that could harm geographic area of Leesville Lake
- e. How to maintain optimum water levels in Leesville Lake

Appendix B

Water Parameter Testing Details

Oxygen

Dissolved oxygen (DO) in Leesville Lake shows a lot about the lake's metabolism. At a certain depth, the concentration of oxygen represents the temporary equilibrium between oxygen-producing processes (such as photosynthesis and aeration) and oxygen-consuming processes (such as decomposition and respiration). The amount of dissolved oxygen that lake water can retain is dependent upon the water's temperature. As temperature increases, the solubility of DO decreases. Because the solubility of gas increases in a liquid as barometric pressure increases, the amount of DO is greater at deeper parts of the lake. Lake eutrophication increases the consumption of dissolved oxygen at the bottom layer of the lake (the hypolimnion), and lowers DO concentrations (Kaulff, 2002, p. 226-236). Dissolved oxygen levels are measured in milligrams per liter (mg/L) or "percent saturation." Percent saturation of dissolved oxygen (DO%) is calculated by taking the amount of oxygen in a liter of water over the total amount of oxygen that the liter can hold.

Large amounts of decaying vegetation lower DO levels in certain areas. In addition to decreasing DO levels, the decomposing material also lowers pH by producing acids. Highly colored acids such as tannic acids, humic acids, and fulvic acids build up and color the water.

DO and percent saturation of dissolved oxygen (DO%) were measured in the field using a Hydrolab probe. Prior to sampling at Leesville Lake, the Hydrolab probe was calibrated at University of Lynchburg.

DO and DO%, along with other Hydrolab parameters, were measured near the dam, at Mile Mark 6, downstream of Toler Bridge, and near the confluence of Pigg River and the lake. Measurements were taken in milligrams per liter. Starting at the surface, readings were typically taken every half meter for 3 meters. At 3 meters and deeper, readings were taken every meter.

Temperature

Measuring temperatures at various depths indicates if the lake is stratified. Freshwater lakes typically are stratified into three zones—the hypolimnion, the epilimnion, and the metalimnion (typically called the thermocline). The hypolimnion, the deep water zone, has little turbulence and contact with the atmosphere. Its respiratory processes use organic matter from the surface layer for fuel. The uppermost layer is the epilimnion, which is turbulent and provides the energy needs of the biota's animals and microbes. In the metalimnion layer, between the hypolimnion and epilimnion, is the temperature gradient called the thermocline. The temperature difference and resulting density

difference of the thermocline disrupts nutrient and gas circulation, resulting in lake stratification (Kaulff, 2002, p. 154).

Temperature was measured at the same test sites as the other Hydrolab parameters by University of Lynchburg. The Hydrolab probe measured the temperature of the lake at specific depths in degrees Celsius. Before taking readings out in the field, the temperature probe was calibrated.

pH

pH indicates the alkalinity or acidity of water. For freshwater lakes, this parameter typically lies between 6 and 8. Measuring the pH shows the softness or hardness of water and the biological activities of the water zones. At pH values below 6 and above 8, species diversity and abundance decreases, although the few remaining species can be in high abundance.

A lake's pH can change throughout the day due to photosynthesis. When phytoplankton and other aquatic plants use sunlight to synthesize energy, they remove carbon dioxide from the water and raise pH. Thus, the highest pH levels are typically found in the late afternoon while the lowest levels are found before sunrise.

pH levels can also depend on the amount of decaying vegetation. In a lake's deeper waters, decomposing plants lower pH through the production of tannic acids, humic acids and fulvic acids. These acids are colored and are characteristic of marshes and heavily-vegetated areas.

pH readings were taken by using a Quanta Hydrolab in the field at the same test sites as the other hydrolab parameters. The process for calibrating the pH probe prior to field sampling is described in the Quality Control and Quality Assurance section.

Conductivity

Conductivity shows the capacity for water to carry electrical currents. Dissolved inorganic solids that carry positive and negative charges influence conductivity. Examples of anions (negatively charged ions) include chloride, nitrate, sulfate, and phosphate; examples of cations (positively charged ions) include sodium, magnesium, calcium, iron, and aluminum. Oil, phenol, alcohol, and sugar are organic solids that remain neutral in water, and thus do not affect conductivity.

Temperature and geology are other factors that influence conductivity. As temperature increases, so does conductivity. The bedrock of the land over which water flows can affect conductivity. In areas with clay soils, conductivity is higher because the dissolved soil ionizes. Areas composed of granite bedrock do not dissolve into ionic materials, and therefore do not affect conductivity as much as areas with clay. The discharge that flows into streams has the ability to raise or lower conductivity. Sewage overflow, which contains chloride, phosphate, and nitrate ions, increases conductivity, while oil leakages

lower conductivity. The measurement for conductivity is micromhos per centimeter ($\mu\text{mhos/cm}$) or microsiemens per centimeter ($\mu\text{s/cm}$) (<http://water.epa.gov/type/rsl/monitoring/>).

Once established, a body of water's range of conductivity does not typically fluctuate. Noticeable differences in readings can mean that a source of discharge or pollution has entered the water.

University of Lynchburg measured conductivity with Quanta Hydrolab Monitoring Probe at the same test locations as the other Hydrolab parameters. Before sampling, the Hydrolab was calibrated. In the field, readings were taken by applying a voltage between two of the probe's electrodes in the water. The resistance of water creates a drop in voltage that the probe then uses to calculate the conductivity.

Turbidity

Turbidity focuses on levels of sediment pollution in water. Turbidity levels affect the passage of light: soil particles, algae, plankton, and microbes can block light and alter the water color. In addition to reducing light penetration, suspended particles also increase water temperatures due to their absorption of heat.

High turbidity levels also affect aquatic life by reducing photosynthesis, decreasing DO, clogging fish gills, and decreasing fish resistance to disease and growth rates. Once materials settle on the bottom of the lake or river, fish eggs and benthic macro invertebrates can be coated in sediment. According to the Environmental Protection Agency (EPA), high turbidity levels can result from soil erosion, waste discharge, urban runoff, eroding stream banks, large numbers of bottom feeders, and excessive algal growth (<http://water.epa.gov/type/rsl/monitoring/>). It is important to note that turbidity is a measurement often used in coordination with Secchi depth and total dissolved solid (TDS). Secchi depth, which measures a lake's transparency and clarity, is another good indicator of sediment levels. TDS measures sediment in water through filtration.

A turbidity meter was used for this parameter. Consisting of a light and a photoelectric cell, the meter measured the amount of light that was deflected at a 90-degree angle by the particles in the water sample. The units used for turbidity were nephelometric turbidity units, or NTUs.

The Hydrolab probe's transparency tube measured turbidity at the same stops as the other six Hydrolab parameters. Prior to measuring the lake's turbidity, the transparency tube in the probe was calibrated.

Oxidation-Reduction Potential

The oxidation-reduction potential (ORP), also called redox potential, of a lake defines the overall balance between oxidizing and reducing processes (Kaulff, 2002, p. 239). ORP measures the potential electrical energy of a liquid by measuring the specific

electrical charges of either oxidizing or reducing agents. In water with a high pH value, there are more reducing agents (a negative ORP value), whereas in water with a low pH value, there are more oxidizing agents resulting in a positive ORP value (<http://www.livingspringwaterionizer.com/water-essentials/water-ph-and-orp>). Redox reactions are critical for aquatic systems: they lead to organic-matter oxidation, the recycling of nutrients, and the flow of energy from microbes to more complex organisms (Kaulff, 2002, p.246). University of Lynchburg and LLA called for the measurement of ORP in the final proposal to further understand chemical activity and developing eutrophication.

ORP is measured in millivolts (mV) by a sensor on the Hydrolab. Within the ORP sensor is a piece of platinum that built up charge without initiating any chemical reactions. This charge was then measured in comparison to the charge in the water. ORP was measured by the Hydrolab probe at three test sites by University of Lynchburg. For the lab calibration prior to field sampling, the same steps as the pH calibration were followed.

Total Phosphorus

Total phosphorus (TP) was measured to show nutrient levels in the water. TP levels were compared over time to determine if the lake had current or potential algae problems.

Phosphorus is a critical nutrient, often in short supply, for aquatic animals and plants. According to the U.S. Environmental Protection Agency, an increase in phosphorus may accelerate plant growth and algae blooms, lower dissolved oxygen, and contribute to the death of fish, invertebrates, and other aquatic animals. Phosphorus can originate from both natural and human sources such as soil and rocks, sewage, fertilizer, agricultural practices, animal manure, residential and commercial cleaning practices, and water treatment. In bodies of water, phosphorus is either organic or inorganic. Plant or animal tissue contains organic phosphate while inorganic phosphate is required by plants and used by animals (<http://water.epa.gov/type/rsl/monitoring/>).

Total phosphorus levels measure all forms of phosphorus, which are total orthophosphorus, total hydrolyzable phosphorus, and total organic phosphorus. Ortho phosphorus describes the plain phosphorus molecule, hydrolyzable refers to phosphorus that has undergone hydrolysis, and organic phosphorus is the phosphorus in animal or plant tissue (<http://www.uga.edu/sisbl/epa-po4.html>).

University of Lynchburg conducted total phosphorus testing at each test site. Leesville Lake samples were collected in labeled polyethylene bottles that had been cleaned and rinsed with tap water, soap, DI water, 10% HCl, and DI water. Samples were refrigerated until testing. At several test sites, water samples were taken at the surface and at a deeper depth.

The method for determining total phosphorus first involved digesting the sample to change all of the phosphate to orthophosphorus. Samples were then reacted with

ascorbic acid to determine concentrations of both dissolved and un-dissolved ortho phosphorus. University of Lynchburg used a Systea EasyChem analyzer to test for TP in the samples. Samples were tested within 28 days of collection. Below is the Systea EasyChem method used for detecting total phosphorus.

Systea EasyChem Method

Summary:

Under this method for the determination of total phosphorus, the aqueous sample was mixed with sulfuric acid, ammonium molybdate and antimony potassium tartrate to form antimony-1, 2-phosphorous molybdenum acid. The resulting complex was then reduced by ascorbic acid to get a blue heteropoly acid (molybdenum blue). To determine the concentration of ortho-phosphate, the absorbance of the formed blue complex, was measured at 880nm.

Since only orthophosphorus formed a blue color in this test, polyphosphates (and some organic phosphorus compounds) were converted to the ortho phosphorus form by manual sulfuric acid hydrolysis. Organic phosphorus compounds were converted to the orthophosphorus form by manual persulfate digestion. The developed color was then measured automatically.

List of Chemicals:

- Ammonium Molybdate, $(\text{NH}_4)_6\text{Mo}_7\text{O}_{24} \cdot 4\text{H}_2\text{O}$
- Ammonium Persulfate, $(\text{NH}_4)_2\text{S}_2\text{O}_8$
- Antimony Potassium Tartrate, $\text{K}(\text{SbO})\text{C}_4\text{H}_4\text{O}_6 \cdot 3\text{H}_2\text{O}$
- Ascorbic Acid, $\text{C}_6\text{H}_8\text{O}_6$
- Isopropyl Alcohol, $(\text{CH}_3)_2\text{CHOH}$
- Phenolphthalein, $\text{C}_{20}\text{H}_{14}\text{O}_4$
- Potassium Dihydrogen Phosphate, KH_2PO_4
- Sulfuric Acid conc., H_2SO_4

Preparation of Reagents and Standards:

Stock Standards:

- 4.0g of ammonium molybdate were dissolved in 75mL DI water, and then the solution was diluted to 100mL with DI. The solution was transferred to a light-resistant polyethylene container and was stable for one month.
- 14.0mL of concentrated sulfuric acid were mixed with 70mL of DI water. The solution was diluted to 100mL with DI water and transferred to a glass container.
- 0.3g of antimony potassium tartrate were dissolved in 75mL DI water, diluted to 100mL with DI water, and transferred to a light-resistant container at 4°C. The solution was stable for approximately 4 weeks.

Reagents:

- For a range up to 20mg/L, a working reagent made up of 50mL sulfuric acid stock, 5mL antimony stock, 15mL molybdate stock, and 50mL of DI water was made and transferred to an EasyChem reagent bottle.

- For the second reagent, 0.9g of ascorbic acid was dissolved in 40mL of DI water. The solution was then diluted to 100mL with DI water and transferred to an EasyChem reagent bottle.

Standards used in the digestion process:

- 15.5mL of sulfuric acid were added to 30mL of DI water. The solution was cooled, diluted to 50mL with DI water, and transferred to a glass container.
- 2.0mL of 11N sulfuric acid solution were added to 50mL of DI water and diluted to 100mL.
- 0.5g phenolphthalein were dissolved in 50mL isopropyl alcohol and 50mL DI water.

Standards:

- A phosphate stock standard of 1000mg/L was prepared by dissolving 4.395g of potassium dihydrogen phosphate in 1000mL of DI water in a 1000mL volumetric flask.
- The 100ppm and 10ppm phosphate stock standard were prepared by subsequently diluting the 1000ppm.

Dissolved Phosphorus

Dissolved phosphorus is the amount of total phosphorus that is in soluble form. This parameter indicates the amount of phosphorus immediately available for aquatic life and, just like one for total phosphate, shows potential algae growth problems.

Dissolved phosphate plays an important role in the aquatic environment. Inorganic dissolved phosphorus is consumed by plants and changed to organic phosphate as it's incorporated into the plant tissue. The organic phosphate then moves to animal tissues when aquatic animals eat the plants. Dissolved phosphate thus ends up in a continual cycle of inorganic phosphorus, organic phosphorus in plant tissue, organic phosphorus in animal tissue, and back to inorganic phosphorus once the animals die and bacteria converts the phosphorus (<http://www.uga.edu/sisbl/epa-po4.html>). Too much dissolved phosphorus can cause the same problems as increases in total phosphorus.

Dissolved phosphorus testing was completed for all test sites by University of Lynchburg. Leesville Lake samples were collected in labeled polyethylene bottles that had been cleaned and rinsed with tap water, soap, DI water, 10% HCl, and DI water. Samples were refrigerated until testing. At several test locations, water samples were taken at the surface and at a deeper depth.

The method for determining dissolved phosphate first involved filtering the samples to remove any suspended particles. Samples were then tested for phosphorus using the same method as total phosphorus. University of Lynchburg used a Syssta EasyChem analyzer to test for dissolved phosphorus in the samples.

Nitrogen

In addition to phosphorus, nitrogen is also an important element that determines a lake's biota. Inputs of nitrogen include drainage basins and the atmosphere. The largest source of nitrogen comes from atmospheric deposits, which have doubled globally due to fossil fuel emission and other human activities (Kaulff, 2002, p. 270-271).

Excess nitrogen has detrimental effects on lake health. High nutrient levels accelerate eutrophication through algal growth. As the plants grow and decompose, the levels of dissolved oxygen (DO) in water decrease. Reduced DO levels can result in the die-off of fish, foul odors, and reduced recreational and aesthetic value.

To determine nitrogen levels, University of Lynchburg tested water samples for nitrate (NO_3). Samples were collected in acid-washed, labeled polyethylene bottles, placed in a cooler with ice, and then transferred to a refrigerator upon the return to University of Lynchburg. Within 48 hours of collection, the samples were tested for NO_3 using the Syssta EasyChem analyzer according to the following method.

Summary of Method:

In this method used to determine nitrate levels, nitrate was reduced to nitrite using Syssta's Chemical RI. The resulting stream was treated with sulfanilamide and N-1-naphtylethylenediamine dihydrochloride under acidic conditions to form a soluble dye, which was measured colorimetrically at 546nm. The product was the sum of the original nitrite ion present plus the nitrite formed from nitrate. Syssta has shown that, regardless of the sample matrix used, recovery of NO_3 to NO_2 is consistently between 95% and 105% recovery.

To determine the nitrate levels, the nitrite alone was subtracted from the total.

List of Chemicals:

Syssta (1-Reagent) Nitrate Solution contained:

- Hydrochloric acid, (HCl)
- N-1-naphtylethylenediamine dihydrochloride, (NEDD) $\text{C}_{12}\text{H}_{14}\text{N}_2 \cdot 2\text{HCl}$
- Sulfanilamide, $\text{C}_6\text{H}_8\text{N}_2\text{O}_2\text{S}$

Stock Standard contained:

- Potassium Nitrate, KNO_3

Preparation of Reagents and Standards:

Reagents:

- The Syssta (1-Reagent) Nitrate Solution was transferred to an EasyChem reagent bottle and placed in the instrument.

Standards:

- A nitrate stock standard of 1000 mg/L was prepared by dissolving 7.218 grams of potassium nitrate in 1000 mL of DI water in a 1000mL volumetric flask.

- The 100 ppm and 10 ppm nitrate stock standard were prepared by subsequently diluting the 1000 ppm.

Summary of Run:

1. Standards and reagents were prepared by the above steps and then placed in the EasyChem instrument.
2. A standard curve for a range of 0.05-10mg/L (check) was created by the following steps:
 - A 10ppm nitrate standard was placed in the instrument.
 - The instrument made 5, 1, 0.5, 0.10, and 0.05ppm standards through dilutions.
 - The instrument read the optical density of the calibrants. O.D. readings of a 0ppm standard and of two blanks (composed of DI water) were taken.
 - A standard curve was set. The linear correlation coefficient (r^2) was always greater than 0.995.
3. The optical density of the samples was measured. By comparing the O.D. values to the standard curve set in Step 1, the concentration of nitrate in the lake samples was determined.
4. For every 10 samples, a check standard, spike, and a duplicate were included. Thus, for 40 cups of samples, there were 4 check standards of a known 10ppm nitrate solution, 4 spikes from different samples, and 4 different duplicates of lake samples. The check standards, serving as the Quality Control Samples (QCS), fell within 10% of the QCS true value.
5. The analysis ended with a blank to check the validity of the instrument's readings.

Fluorescence

Using a surface sample, University of Lynchburg measured fluorescence. Fluorescence measurements correlate with the concentration of Chlorophyll in water. University of Lynchburg field and lab verified and calibrated the barometer. A fluorescence probe connected to a monitoring screen was lowered into the water at half meter and whole meter intervals by University of Lynchburg.

Integrated Chlorophyll a

Water samples were measured for integrated Chlorophyll a to show the amount of productivity throughout the photic zone. Chlorophyll, a green pigment that synthesizes organic elements from sunlight in plants, is required for algal growth. Chlorophyll a is the most common type of pigment found in algae. High levels of Chlorophyll a demonstrate high algal levels (<http://www.chesapeakebay.net/Chlorophylla.aspx?menuitem=14655>).

University of Lynchburg took water samples at four test sites for Chlorophyll a testing. Water samples were collected in labeled polyethylene bottles that had been cleaned and rinsed with tap water, soap, DI water, 10% HCl, and DI water. Samples were placed in a cooler half-filled with ice at the site of the collection, and then stored in a refrigerator back at University of Lynchburg.

To determine Chlorophyll *a* levels, University of Lynchburg used the Chlorophyll *a* filtration method. Within 48 hours, the water samples were filtered through a vacuum pump. First, to prevent phytoplankton from clogging the filter, some magnesium carbonate was squirted onto a 0.45 micron 4.25 cm glass fiber filter. Then, about 150 mL or 200 mL of the lake sample was poured and drained through the filter using a vacuum pump. The filter was then folded, placed in aluminum foil, labeled, and refrigerated until it was tested.

Secchi Depth

Measured Secchi depth is one of the simplest ways to determine lake eutrophication and light transparency. The amount of nutrients in lake water determines a lake's cloudiness by accelerating the growth of phytoplankton (microscopic animals) and therefore the growth of zooplankton (microscopic animals). Inorganic solids from fertilizers, soil erosion, and sewage also increase a lake's cloudiness. Secchi disk transparency, Chlorophyll *a*, and total phosphorus together define a lake's trophic status (degree of eutrophication).

Typically Secchi depth is lowest during the spring and summer months, when water runoff and phytoplankton productivity is most vigorous. Water clarity often increases, sometimes doubling Secchi depths, during the fall and winter months. Weather is another factor: a drought will lead to increased water clarity while storms with heavy rain increase runoff and subsequently decrease Secchi depth.

A Secchi disk, consisting of a 20 cm black and white round disk attached to a line, is used to measure Secchi depth. The disk is lowered into the water until the lines separating the black and white sections on the disk are no longer distinguishable. Secchi depth is then recorded at that depth in the water column. University of Lynchburg measured Secchi depth at all of the eight stops. The rope attached to the disk was marked in meter increments. Measurements were recorded in meters and taken to the tenth decimal place. Volunteers from LLA also took Secchi depth readings on or around similar dates as University of Lynchburg.

Trophic State

Secchi depth, integrated Chlorophyll *a*, and total phosphorus (TP) are used to determine a lake's trophic status. Exposing a lake's health, a trophic state shows the lake's degree of eutrophication. There are 3 main categories under the Trophic State Index (TSI); eutrophic, mesotrophic, and oligotrophic. Eutrophic lakes are highly productive and concentrated in nutrients; mesotrophic lakes experience temperate productivity and have moderate nutrient levels; oligotrophic lakes have little productivity and low nutrient levels. When the TSI value is greater than 51, lakes are classified as eutrophic. Water has more clarity in oligotrophic lakes rather than in eutrophic lakes due to the lower nutrient levels (<http://www.rmbel.info/reports/Static/TSI.aspx>).

E. coli

To determine levels of bacteria and look for health hazards, University of Lynchburg and LLA took *E. coli* readings at Leesville Lake. *Escherichia coli* (*E. coli*) is the accepted indicator organism for bacteria levels in Virginia. For the purposes of this report, *E. coli* levels are representative of coliform levels.

High levels of coliform bacteria found in lakes may point to the presence of human or animal excrement. Coliform bacteria are not harmful; however their presence shows that disease-causing bacteria or viruses may be present. Waterborne diseases such as dysentery, giardiasis, typhoid and other gastrointestinal infections can be contracted by swimming or drinking water from a lake containing human sewage. To assure the safety of water from such diseases, the water must meet the state standard for bacteria. In Virginia, the calendar-month geometric mean concentration of *E. coli* cannot exceed 126 cfu/100 mL, and no sample can exceed a concentration of 235 cfu/100mL (Virginia Tech, 2006).

Conducting a fecal coliform test will show if sewage pollution is the problem. Additional tests can distinguish between human and animal sources if necessary. Nonpoint sources are the primary reason for high bacteria levels. Agriculture, land-applied animal waste, and livestock manure are the main nonpoint sources. Cattle and wildlife directly dumping feces into streams cause a large bacteria load. Nonpoint sources from residential areas include straight pipes, failing septic systems, and pet waste (Virginia Tech, 2006).

Prior to 2011, Leesville Lake Association citizen volunteers used Coliscan Easygel® test kits for *E. coli* testing. Beginning in 2011 water samples collected by both LLA volunteers and University of Lynchburg were tested for *E. coli* with the Colilert™ test method. Samples were collected in sterile 125 ml polypropylene bottles and stored according to standard methods. A Colilert™ media packet was added to each water sample; the mixture was poured into a sterile Quanti-Tray, sealed and incubated. A color change from clear to yellow indicates a positive result for total coliform and fluorescence indicates a positive result for *E. coli*. The number of yellow and fluorescent wells are counted and the values are evaluated using a Most Probable Number (MPN) chart developed by the IDEXX Company, which developed the test method. MPN is used instead of colony forming units (cfus) and is generally considered an equivalent measure of the microbial and bacterial populations. The Colilert™ method has been rated as the "best" in agreement with a reference lab, has the lowest detection limit and the method is EPA approved for ambient water.

Zooplankton

To assess the health and structure of the lake's biological community, water samples were tested for zooplankton levels. Nutrient-rich (eutrophic) lakes, in comparison to nutrient-poor lakes have more zooplankton. As the levels of phytoplankton increase, zooplankton also increase but at a slower rate (Kaulff, 2002).

Appendix C

Quality Assurance (QA) / Quality Control (QC)

Sample Collection, Preservation, and Storage:

Leesville Lake samples were collected in labeled polyethylene bottles that had been cleaned and rinsed with tap water, soap, DI water, a 2M HCl (we used 1M HCl) acid wash and finally more DI water. Each label denoted date, location, station, and depth if relevant.

Samples were refrigerated.

For detecting nitrate, nitrite, orthophosphate, and ammonia, samples were analyzed within 48 hours of collection. For total phosphorus (TP) and Total Kjeldahl nitrogen (TKN), the samples were analyzed within 28 days.

Hydrolab Calibration and Sampling post Calibration:

□□□ A Hydrolab Quanta Water Quality Instrument is used for all in situ water quality measurements. Each parameter is calibrated before use according to procedures established by the manufacturer.

□□ The sensors were cleaned and prepared for the following parameters:

□□ Specific Conductance - A calibration standard was poured to within a centimeter of the top of the cup. Any bubbles within the measurement cell of the specific conductance sensor were tapped out. The conductivity of the calibration standard was 1.412.

□□ Dissolved Oxygen %Saturation and mg/L:

1. Cleaning and Preparation: The o-ring securing the DO membrane was removed, the old electrolyte was shaken out and the DO membrane was rinsed with fresh DO electrolyte. Fresh DO electrolyte was poured into the sensor until a meniscus of electrolyte rose above the entire electrode surface of the sensor. After checking to make sure there were no bubbles in the electrolyte, a new membrane was placed on the top of the DO sensor and secured with the o-ring. There were no wrinkles in the membrane or bubbles in the electrolyte. Excess membrane was trimmed away.
2. Calibration for DO: The Saturated Air-Method was used for the DO calibration. The Calibration cup was filled with DI water until the water was level with the o-ring. No water droplets were on the membrane. The black calibration cup cover, turned upside down, was placed on the top of the Calibration Cup. The barometric pressure, which was 762mmHg, was determined for entry as the calibration standard.

pH and ORP (Redox):

1. Cleaning and Preparation: The pH sensor was clean with a soft cloth wet with rubbing alcohol and then rinsed with DI water. The platinum band at the tip of

the ORP sensor was checked for any discoloration or contamination. Then the reference sleeve was pulled away from the Transmitter and the old electrolyte from the reference sleeve was discarded. Then two KCl salt pellets (or KCl rings) were dropped into the reference sleeve and the sleeve was refilled with reference electrolyte. With the Transmitter sensors pointed toward the floor, the full reference sleeve was pushed back onto its mount until the sleeve had just covered the first o-ring located on the mount. The Transmitter was then turned so that the sensors pointed towards the ceiling, and the sleeve was pushed the rest of the way onto its mount. The sensors were rinsed with DI water. Next, the Low-Ionic Strength Reference (LISRef) was cleaned and prepared. First the plastic LISRef soaking cap was removed and set aside. The sensor tip was then checked for any visible contamination. Following cleaning, the plastic LISRef soaking cap was filled with reference electrolyte, reinstalled over the LISRef tip, and soaked overnight. The plastic LISRef soaking cap was removed for calibration and field use.

2. Calibration for pH and ORP: A two-point calibration was used, with two pH standards. First, a pH standard of 7 was treated as the zero, and then a pH standard of 4 was treated as the slope. Both pH standards, when calibrated separately, were poured to within a centimeter of the top of the cup.

Turbidity:

1. Cleaning and Preparation: A non-abrasive, lint-free cloth was used to clean the quartz glass tube to remove any scratches that might reduce the sensors accuracy. The sensor was then rinsed with DI water.
2. Calibration for Turbidity: A Quick-Cal Cube was cleaned and dried with a non-abrasive, lint-free cloth. The cube was then placed in the turbidity sensors optical area. Turbidity analyzed and also checked at 0 with DI water.

- ☐☐☐ Depth: Zero was entered for the standard at the water's surface.
- ☐☐ After all of the parameters were calibrated, the calibration cup was filled with $\frac{1}{4}$ of tap water to protect the sensors from damage and drying out during transportation to the lake and storage in University of Lynchburg.

- ☐☐☐ The hydrolab was calibrated the morning of each day of lake sampling.

Post Calibration

Pre Sampling at Leesville Lake

- ☐☐ The bottles were washed according to above procedures, labeled, and placed in a milk crate. 18 bottles were taken: 3 for zooplankton, 12 for nutrients, and 3 for whole water.
- ☐☐☐ The Hydrolab was calibrated and the information was recorded.
- ☐☐ An ice chest was half-filled with ice.
- ☐☐☐ Batteries in the Hydrolab were checked.
- ☐☐ At the lake, the following parameters were recorded:

- o Smith Mountain Lake tailwaters: whole water for TP
- o Pigg River near its mouth: Secchi depth, TP, Hydrolab data
- o Toler Bridge (after confluence with Pigg River/riverine zone): Secchi depth, TP, no Hydrolab data was taken because the flow of water was too quick
- o Mile Mark 9 (mixing zone): Secchi depth, TP?
- o Mile Mark 6 (end of mixing zone/beginning of lacustrine): Secchi depth, TP, hydrolab data
- o Tri-County Marina: Secchi depth, TP
- o Leesville Lake Marina: Secchi depth, TP
- o Near dam (end point of lacustrine): Secchi depth, TP, Hydrolab data

No data for E. Coli was collected because of a lack of zithromax packs.

Nitrate Method

Summary of Method:

In this method used to determine nitrate levels, nitrate was reduced to nitrite using Systea's Chemical RI. The resulting stream was treated with sulfanilamide and N-1-naphtylethylenediamine dihydrochloride under acidic conditions to form a soluble dye, which was measured colorimetrically at 546nm. The product was the sum of the original nitrite ion present plus the nitrite formed from nitrate. Systea has shown that, regardless of the sample matrix used, recovery of NO₃ to NO₂ is consistently between 95% and 105% recovery.

To determine the nitrate levels, the nitrite alone was subtracted from the total.

Summary of Run:

1. The lake samples were chilled to about 4°C and analyzed within 48 hours
2. Standards and reagents were prepared by the above steps and then placed in the EasyChem instrument.
3. A standard curve for a range of 0.05-10mg/L (check) was created by the following steps:
 - ☐ A 10ppm nitrate standard was placed in the instrument.

Standards were prepared through dilutions at 5, 1, 0.5, 0.10, and 0.05ppm

The instrument read the optical density of the calibrants. O.D. readings of a 0ppm standard and of two blanks (composed of DI water) were taken.

- ☐ A standard curve was set. The linear correlation coefficient (r^2) was always greater than 0.995.
- 4. The optical density of the samples was measured. By comparing the O.D. values to the standard curve set in Step 1, the concentration of nitrate in the lake samples was determined.
- 5. For every 10 samples, a check standard, spike, and a duplicate were included. Thus, for 40 cups of samples, there were 4 check standards of a known 10ppm nitrate solution, 4 spikes from different samples, and 4 different duplicates of

lake samples. The check standards, serving as the Quality Control Samples (QCS), fell within 10% of the QCS true value.

6. The analysis ended with a blank to check the validity of the instruments readings.

Total Phosphate Method

Summary of Method:

Under this method for the determination of total phosphate, the aqueous sample was mixed with sulfuric acid, ammonium molybdate and antimony potassium tartrate to form antimony-1, 2-phosphorous molybdenum acid. The resulting complex was then reduced by ascorbic acid to get a blue heteropoly acid (molybdenum blue). To determine the concentration of ortho-phosphate, the absorbance of the formed blue complex, was measured at 880nm.

Since only orthophosphate formed a blue color in this test, polyphosphates (and some organic phosphorus compounds) were converted to the orthophosphate form by manual sulfuric acid hydrolysis. Organic phosphorus compounds were converted to the orthophosphate form by manual persulfate digestion. The developed color was then measured automatically.

Summary of Run:

1. The lake samples were chilled to about 4°C and analyzed within 48 hours
2. Standards and reagents were prepared by the above steps and then placed in the EasyChem instrument.
3. A standard curve for a range of 0-5mg/L (check) was created by the following steps:
 - ☐ A 5ppm total phosphate standard was placed in the instrument.
 - ☐

Standards were prepared through dilutions at 5, 2, 1, 0.5, 0.1, and 0ppm

- ☐ The instrument read the optical density of the calibrants. O.D. readings of a 0ppm standard and of two blanks (composed of DI water) were taken.
 - ☐ A standard curve was set. The linear correlation coefficient (r^2) was always greater than 0.995.
4. The optical density of the samples was measured. By comparing the O.D. values to the standard curve set in Step 1, the concentration of nitrate in the lake samples was determined.
 5. For every 5 samples, a blank and a duplicate were included. Halfway through the run and at the end of the run there were 2 check standards. Thus, for 40 cups of samples, there were 2 check standards of a known 1ppm phosphate solution and 2 check standards of a known 0.5ppm phosphate solution, and 8 different duplicates of lake samples. The check standards, serving as the Quality Control Samples (QCS), fell within 10% of the QCS true value.
 6. The analysis ended with a blank to check the validity of the instruments readings.

Quality Assurance/Quality Control

Initial demonstration of laboratory capability was established through the following methods:

Method Detection Limit (MDL): According to the Code of Federal Regulations, the MDL is the minimum concentration that can be determined with 99% confidence that the true concentration is greater than zero. This method guarantees the ability to detect nutrient concentrations at low levels. In order to proceed with testing, the MDL in reagent water for nutrients had to be less than or equal to the concentrations in the table below. These concentrations were taken from the Ambient Water Quality Monitoring Project Plan for the Department of Environmental Quality:

Nitrate	0.04 mg/L
Nitrite	0.01 mg/L
Orthophosphate	0.01 mg/L
Total Phosphate	0.01 mg/L
Ammonia	0.04 mg/L

Initial Precision and Recovery (IPR): This practice establishes the ability to generate acceptable precision and accuracy. 4 Laboratory Control Samples (LCS) were analyzed and the average percent of recovery (X) along with the standard deviation of the percent recovery (s) for nitrate was determined. Our tested recovery did not exceed the precision limit and X did not fall outside the 90-110% range for recovery. In instances where recovery was not accomplished analysis was repeated to achieve the acceptable recovery limits.

Matrix spikes (MS) and matrix spike duplicate (MSD) samples were analyzed to demonstrate method accuracy and precision and to monitor matrix interferences.

Out of each set of ten samples, one sample aliquot was analyzed. First, the background concentration (B) of analyte was determined. Then the sample was spiked with the amount of analyte stock solution to produce a concentration in the sample of 1mg/L, or a concentration 1 to 5 times the background concentration. Finally, two additional sample aliquots were spiked with the spiking solution, and the concentrations after spiking (A) were measured.

The percent recovery of analyte in each aliquot was determined using the following equation:

$$P = [100(A - B)]/T$$

The spike recovery percentage had to lie within the QC acceptance criteria of 90 to 110%. The relative percent difference between the two spiked sample results also had to be less than 20%.

Laboratory reagent water blanks were analyzed with each analytical batch to demonstrate freedom from contamination and that detected nitrate is not at a concentration greater than the MDL.

To demonstrate that the analysis system was in control, the LCS procedure was performed on an ongoing basis, with results lying within +/-10% of the true value.

Records defining the quality of data generated, including LCS data and QC charts, were maintained. A statement of laboratory data quality for each analyte, with the average percent recovery (R) and the standard deviation of the percent recovery (s_r). The accuracy as a recovery interval was expressed as $R - 3s_r$ to $R + 3s_r$.

To demonstrate that the analytical system was in control, the laboratory periodically tested an external reference sample. We have not yet conducted this analysis but will strive to this standard in 2012.

Quality Assurance (QA) / Quality Control (QC) Checklist:

General Procedures:

- Checklist of all routine material and equipment:
Checklist should include field data sheets showing sampling sites, QA sites if QC samples are collected, containers, preservatives, and labels including QC labels
- Also a topo map, GPS unit, safety gear, and cell phone
- Print field data sheets and labels from CEDS for the run
- Clean equipment, check its condition, and charge batteries

Sampling Requirements:

- For the collection of organic materials, use non-organic or inert materials such as Teflon or stainless steel
- Water matrices: 1. Rope on spool 2. Stainless steel bucket with fitting for bacteria sample bottle 3. Syringe, filter paper, filter holder etc.

Sampling Equipment Preparation and Cleaning:

- Water Sampling Equipment:
- Daily: Rinse buckets at the end of the day with analyte free water and allow to dry; if a pump/hose was used, pump 5 gallons of analyte free water through system and allow to drain; if using Kemmerer or Alpha Bottle sampling devices, follow manufacturer's instructions using analyte free water
- Weekly: Wash buckets with lab grade soap (Liquinox or Alconox) using a brush to remove particulate matter or surface film; rinse with tap water and then analyte free water, allow to dry
- Monthly: pump 5 gallons of a 5% solution (consists of 1 quart of vinegar mixed with 4 $\frac{3}{4}$ gallons of water) through hose and pump apparatus; pump 5 gallons of analyte free water through hose and pump apparatus and completely drain

- Annually: replace hoses of pump and hose sampling devices
- Sample container handling and preservation:
- Refer to the DCLS laboratory catalog in CEDS for the appropriate preservation procedures. Samples not preserved properly may be rejected by DCLS.
- make sure the lids were on tight
- Sample containers should be stored with the tops fastened.
- Samples should be iced to 4°C in a cooler immediately after collection. In the cooler, samples shall be placed upright and if possible, covered with ice in such a manner that the container openings are above the level of ice. Chlorophyll a filter pad samples will be placed in appropriately sized Ziploc bags and placed on top of the layer of ice. Ziploc bags containing filters should be oriented so that the sealed opening of the Ziploc bag hangs outside the cooler lid when the lid is closed. Bacteria sample bottles should be stored in mesh bags, placed in coolers and surrounded with wet ice.
- Package glass sample containers in bubble wrap or other waterproof protective materials
- Make sure that every cooler used to ship samples to DCLS contains one temperature bottle to determine sample temp upon arrival at DCLS.
- Regional office should date boxed or packaged sample containers upon receipt and stock on shelves with the oldest dated box/packages used first.

Sample identification:

- Identify each sample by the station description, date, time, depth description, collector initials, parameter group code, sample type, container number, preservation used and volume filtered, if applicable.
- Print sample identification information on an adhesive Avery label and applied to the exterior of the container.
- Print labels for established sampling sites from CEDS

Field Sampling Procedures:

- Use protective gloves: latex or nitrile gloves may be used for common sampling conditions; disposable ones are needed for clean metal sampling
- Rinse sample equipment with sample water before taking actual sample. Dispose of rinse water away from sampling site.
- Take surface water samples facing upstream and in the center of main area of flow
- For bacteria samples, do not rinse bottle before collecting sample and always collect as a grab sample, do not composite

Sampling from a boat:

- Bacteria samples: grab from the water in direction of current, do not use a pump or hose
- Sample away from engine in direction of current (if possible)
- Clear the pump and hose using the air bubble method or calculate the clearing time

Secchi disk:

- Use disk 20 cm in diameter attached to a line/chain marked in 0.1 m increments, check these once a year
- Lower Secchi disk on shaded side of boat until black and white quadrants are no longer distinguishable
- Note the above depth, and then depth at which the quadrants are once again distinct
- Secchi depth is the average of the two depths to the closest 0.1 m

Vacuum Filtering Method (In-Line Filtering)

- Nitrogen, phosphorus, and Chlorophyll a
- conduct filtering as soon as possible after collection but no later than 2 hours after sample collection

Preparation:

- Muffle 25 mm diameter glass fiber filters utilized for PNC (Particulate Nitrogen and Particulate Carbon analysis),
- Acid wash the towers, graduated cylinders and plastic sample bottles
- Rinse the forceps with DI water
- Ensure proper delivery of uncontaminated, dry filter samples to DCLS.

Filtration of samples:

- Rinse acid washed and DI washed container with sample water, then fill container with enough sample water to filter more than one sample
- Rinse filtration towers and base with DI water, connect vacuum power pump to battery
- Place filters on bases, place clean NTNP bottles under PP bases, rinse graduated cylinders with sample, and transfer sample to towers
- Turn pump on
- Add MgCO_3 to last 25 ml of Chl a sample
- Close valves or turn off pump to remove filtration vacuum
- Bleed excess pressure off and then open vacuum valves of stacks slowly
- Rinse forceps with DI water
- Remove filters from base
- Record volume filtered
- Remove NTNP bottle from PP cylinder and cap tightly
- Label- station, date, time depth, unit code, collector's initials, group code, container #, volume of sample filtered
- Place samples on ice

Collection of samples for Chlorophyll a using syringe filtration p. 21

- Field filtration is done with positive pressure and a syringe
- Filter approx. 300 ml of site water through a 150cc polypropylene syringe

Field Quality Control Samples

- Equipment Blanks: need to be collected in field between stations, once for each 25

sites sampled, flush/rinse with analyte free water

- Field split samples: collect for each 25 sites sampled, obtain 1 bucket of water and fill 2 identical containers sequentially

Field Testing Procedures (p. 69)

pH/mV/Ion meter

- calibrate meter each day before use with minimum of 2 fresh standard buffer solutions that bracket expected pH
- check calibrations using standard buffer solutions at least once during or end of sampling and record in log sheet, if pH is off by more than 0.2 pH units, flag data collected
- check instrument at least once a month and record in log sheet

Dissolved oxygen and temperature meter

- Calibrate daily when in use, air calibration is the easiest
- Record the % saturated DO in the log sheet
- A DO% saturation confirmation needs to be performed in the middle of run
- Field probe maintenance: average life of membrane is 2-4 weeks, but may vary
- Some gases can contaminate the sensor, evidenced by discoloration of gold cathode
- Check probe performance every month when probe is in daily use
- For the DO meter, make calibration checks daily. Check calibration during sampling and at conclusion of day's sampling. Record onto log sheet; if check is off $\pm 5\%$, flag data
- Monthly, place probe into a clean bucket full of analyte free or uncontaminated water, rinse BOD bottle 1 or 2 times with water, determine DO by Winkler method
- If the oxygen concentration of the air calibration disagrees with average results of Winkler value by more than 0.5 mg/l, have the electrode or meter serviced or replaced
- Check temperature probe against another multiprobe instrument's temp. probe semi-annually

DO and conductivity meter calibration checks

- Daily: check calibration during sampling and at conclusion of day's sampling, record and flag data if off by more than 5%
- Monthly: place probe in bucket of analyte free water, rinse BOD bottle with water from bucket, determine the DO by the Winkler method
- If oxygen concentration of air calibration disagrees with results of Winkler value by more than 0.5 mg/l, service or replace electrode

Thermistor Verification

- Check temperature probe against another multiprobe instrument's temperature probe semi-annually
- Check against 3 points such as an ice/water mixture, room water temperature, and warm water temperature

- Do not use thermistor if the difference is more than 0.5 degrees C

Sample Identification and Corrective Action

- Make entries in field data sheet for all field parameters
- Print label from pre-print label file in computer. Include station ID, date collected, time collected, depth, unit code, collector, group code, preservative, lab processing code, blank/dup designation, priority and container number
- Corrective Action: CAR form must be forwarded to QA officer for review and recommendations

Appendix D – Collected Data

Table 1.1. Dam (Lacustrine) Conductivity ($\mu\text{S}/\text{cm}$) measures over study period (2022)

Depth:	29-Apr	31-May	29-Jun	28-Jul	29-Aug	28-Sept	26-Oct
0	0.162	0.167	0.175	0.178	0.174	0.174	0.168
0.5	0.163	0.167	0.17	0.177	0.173	0.174	0.168
1	0.162	0.163	0.174	0.177	0.173	0.174	0.168
1.5	0.163	0.163	0.175	0.177	0.173	0.173	0.167
2	0.162	0.157	0.174	0.176	0.172	0.173	0.167
2.5	0.162	0.145	0.174	0.177	0.173	0.173	0.167
3	0.162	0.145	0.173	0.177	0.173	0.173	0.166
4	0.162	0.145	0.174	0.18	0.173	0.173	0.167
5	0.161	0.146	0.176	0.18	0.173	0.173	0.166
6	0.162	0.148	0.175	0.179	0.174	0.172	0.166
7	0.162	0.147	0.174	0.179	0.174	0.172	0.166
8	0.163	0.147	0.173	0.18	0.174	0.172	0.166
9	0.162	0.148	0.173	0.179	0.174	0.172	0.166
10	0.164	0.147	0.172	0.179	0.174	0.172	0.167
11	0.164	0.147	0.171	0.179	0.174	0.173	0.167
12	0.167	0.145	0.171	0.179	0.174	0.173	0.167
13	0.167	0.145	0.169	0.18	0.174	0.173	0.167
14	0.167	0.144	0.168	0.18	0.174	0.174	0.167

Table 1.2. Dam (Lacustrine) Dissolved Oxygen (mg/L) measures over study period (2022)

Depth:	29-Apr	31-May	29-Jun	28-Jul	29-Aug	28-Sept	26-Oct
0	10.5	10.04	9.17	9.61	10.41	5.92	9.4
0.5	10.6	10.2	9.37	9.53	10.5	6.08	9.39
1	10.5	11.5	9.26	9.42	10.51	6.17	9.38
1.5	10.4	11.8	9.33	9.43	10.3	6.2	9.1
2	10.4	10.1	9.48	9.33	8.14	6.05	8.4
2.5	10.3	7.4	9.48	9.07	8.02	5.94	8.4
3	10.3	6.9	8.3	8.79	6.93	5.83	6.8
4	10.1	6.8	6.8	4.94	5.93	5.59	6.58
5	9.84	6.7	6.2	3.51	4.52	5.48	6.5
6	9.4	6.6	5.5	2.54	3.4	5.39	6.5

7	9.18	6.5	4.7	1.9	2.6	5.39	6.4
8	9.06	6.6	4.35	1.43	1.48	5.39	6.3
9	8.89	6.5	3.92	0.99	1.79	5.2	5.9
10	8.6	6.5	3.67	0.64	1.37	4.3	5.8
11	8.3	6.4	3.4	0.57	1.2	3.46	5.9
12	8.1	6.3	2.9	0.5	0.87	3.7	5.9
13	8	6.2	2.55	0.41	0.6	3.41	5.8
14	7.89	6	2.5	0.35		2.46	5.4

Table 1.3. Dam (Lacustrine) Temperature (°C) measures over study period (2022)

Depth:	29-Apr	31-May	29-Jun	28-Jul	29-Aug	28-Sept	26-Oct
0	17.3	25.3	26.8	28.1	27.3	23.4	18.2
0.5	16.9	24.3	25.9	28.0	27.2	23.3	18.2
1	16.8	22.6	25.7	27.9	27.1	23.2	18.2
1.5	16.7	21.6	25.1	27.8	26.1	23.1	18.1
2	16.7	18.8	24.3	27.7	25.7	23.1	17.9
2.5	16.7	17.4	23.4	27.6	25.5	23.1	17.8
3	16.6	16.7	22.7	27.4	25.3	23.1	17.6
4	16.5	16.6	21.9	26.4	24.9	23.1	17.3
5	16.4	16.4	21.5	23.6	24.7	23.1	17.3
6	15.1	16.2	21.1	22.8	24.5	23.0	17.3
7	14.6	16.1	20.8	22.4	24.3	23.0	17.2
8	14.1	15.9	20.4	21.9	24.0	23.0	17.2
9	13.8	15.8	20.1	21.6	23.9	23.0	17.2
10	13.5	15.5	19.8	21.0	23.6	23.0	17.2
11	13.2	15.5	19.4	20.8	23.5	23.0	17.2
12	12.6	15.2	18.8	20.6	23.3	22.9	17.1
13	12.5	15.2	18.5	20.3	23.2	22.9	17.1
14	12.4	15.1	17.7	19.8		22.8	17.1

Table 1.4. Dam (Lacustrine) Chlorophyll a (ppb) concentrations over study period (2022)

Depth:	29-Apr	31-May	29-Jun	28-Jul	29-Aug	28-Sept	26-Oct
0	1.5	3.3	2.8	5.4	5.8	5.9	14.1
0.5	7.2	4.9	3.7	6.9	7	8	18.1
1	8.2	9.8	3.9	7.3	9.7	11.6	19.1
1.5	8.6	11.4	5.3	8.6	13.7	16.3	12.8
2	9.1	16.4	6.8	10	23.2	16.2	11.4
2.5	9.6	23.3	11.24	10.3	22.8	12.9	10.9

3	8.1	10.4	14.8	10.7	24.8	12.7	7.5
4	7.8	6.1	11.4	7.74	25.9	14.3	7.4
5	7.01	4.5	9.1	5.4	21	12.6	7.7
6	4.9	3.9	8.7	4.7	18.4	11.5	6.6
7	5.5	3.8	6.9	3.2	13.7	12.5	6.6
8	4.2	3.3	7.2	3.1	9.2	11.9	7.5
9	4.8	3.3	5.2	2	9.5	10.6	5.8
10	3.8	3.5	4.3	1.6	7.3	9.8	5.7
11	3	3.2	3.9	1.9	5.5	7.6	6.3
12	3.3	3.3	2.4	1.8	5.4	9.2	5.8
13	3.4	3.1	3	2.1	4.2	7.9	6.1
14	2.9	3.1	2.7	1.6		7.3	6.7

Table 1.5. Dam (Lacustrine) pH measures over study period (2022)

Depth:	29-Apr	31-May	29-Jun	28-Jul	29-Aug	28-Sept	26-Oct
0	7.91	8.07	8.21	8.72	8.7	7.57	7.78
0.5	7.95	8.05	8.2	8.73	8.75	7.55	7.79
1	7.96	8.14	8.19	8.73	8.75	7.5	7
1.5	7.96	8.3	8.11	8.72	8.56	7.5	7.77
2	7.96	7.8	7.99	8.7	8.15	7.5	7.7
2.5	7.96	7.4	7.89	8.65	7.8	7.5	7.6
3	7.96	7.3	7.7	8.54	7.71	7.5	7.6
4	7.91	7.12	7.56	7.63	7.55	7.5	7.5
5	7.8	7.08	7.37	7.28	7.38	7.49	7.4
6	7.57	7.06	7.27	7.15	7.29	7.47	7.4
7	7.51	7.05	7.18	7.07	7.2	7.45	7.3
8	7.41	7.05	7.12	7	7.13	7.45	7.3
9	7.4	7.05	7.1	6.96	7.09	7.44	7.3
10	7.3	7.04	7.04	6.93	7.07	7.3	7.3
11	7.3	7.04	7.01	6.91	7.04	7.3	7.3
12	7.2	7.02	6.97	6.9	7.02	7.2	7.3
13	7.2	7.01	6.94	6.88	6.9	7.2	7.3
14	7.2	6.9	6.91	6.86		7.2	7.3

Table 1.6. Dam (Lacustrine) ORP (mV) measures over study period (2022)

Depth:	29-Apr	31-May	29-Jun	28-Jul	29-Aug	28-Sept	26-Oct
0	349	390	428	402	409	352	359
0.5	360	392	428	402	411	355	360

1	372	395	429	402	413	357	362
1.5	375	394	432	402	415	358	363
2	382	401	434	403	419	360	364
2.5	383	403	435	403	420	361	365
3	385	405	437	403	421	362	366
4	389	405	439	410	423	363	367
5	394	406	440	412	423	365	367
6	396	407	440	413	424	366	368
7	400	408	441	414	425	367	369
8	404	409	441	415	425	368	370
9	406	410	442	416	426	370	371
10	407	410	442	417	426	371	371
11	409	412	443	418	426	372	372
12	409	411	444	419	427	373	373
13	411	414	444	419	427	374	374
14	411	413	445	420		374	374

Table 1.7. Dam (lacustrine) Turbidity (NTU) measures over study period (2022)

Depth:	29-Apr	31-May	29-Jun	28-Jul	29-Aug	28-Sept	26-Oct
0	2.8	1.9	0.5	2.1	1.4	1	1.8
0.5	3.1	2.4	1.2	2.4	1.8	1.1	1.8
1	2.8	2.6	1.4	2.2	1.7	1.3	2
1.5	2.6	2.6	1.6	2.1	2.1	1.5	1.9
2	2.8	6.6	1.7	2	1.9	1.1	2
2.5	2.4	20.6	2	2.1	2.1	1.2	2
3	2.7	23.6	1.8	2.2	1.8	1.3	2.1
4	3	26.8	1.8	2.8	1.6	1.1	2.2
5	3.2	23.5	1.4	1.8	1.8	1.2	3.5
6	2.7	22.3	1.8	2.3	1.9	1.3	2.7
7	3.5	23.4	1.7	2.1	1.4	1.4	2.7
8	2.4	23.1	1.7	2.6	2.2	1.3	4.1
9	2.8	27.2	2.5	2.8	1.7	1.7	3.9
10	2.5	27.1	1.9	3	1.9	1.7	4.4
11	3.1	30.1	1.8	3.1	2	2	4.7
12	2.6	30.7	3	2.8	2.2	2.3	5.3
13	3	33.4	2.8	2.7	2	2.7	6
14	3.1	34.7	2.5	3.2		2.9	10.1

Mile Marker 6

Table 1.9. Mile Marker 6 (Transition) Conductivity ($\mu\text{S}/\text{cm}$) measures over study period (2022)

Depth:	29-Apr	31-May	29-Jun	28-Jul	29-Aug	28-Sept	26-Oct
0	0.162	0.157	0.181	0.178	0.174	0.174	0.17
0.5	0.162	0.158	0.179	0.177	0.175	0.174	0.17
1	0.161	0.151	0.18	0.178	0.174	0.173	0.169
1.5	0.162	0.15	0.18	0.179	0.175	0.173	0.169
2	0.161	0.149	0.183	0.179	0.174	0.173	0.169
2.5	0.162	0.15	0.182	0.179	0.174	0.173	0.169
3	0.161	0.155	0.181	0.18	0.174	0.173	0.169
4	0.161	0.153	0.18	0.18	0.173	0.172	0.168
5	0.161	0.157	0.181	0.18	0.173	0.172	0.168
6	0.16	0.161	0.18	0.18	0.174	0.172	0.168
7	0.16	0.165	0.179	0.183	0.174	0.172	0.167
8	0.16	0.166	0.178	0.184	0.175	0.172	0.167
9	0.16				0.176	0.172	0.167
10	0.16					0.172	

Table 1.10. Mile Marker 6 (Transition) Dissolved Oxygen (mg/L) measures over study period (2022)

Depth:	29-Apr	31-May	29-Jun	28-Jul	29-Aug	38-Sep	26-Oct
0	10.16	10.37	9.55	10.6	9.71	6.5	9.6
0.5	10.11	10.5	9.6	10.78	9.51	6.49	9.6
1	10.06	9.5	9.52	9.9	9.47	6.35	9.5
1.5	9.7	8.4	9.37	9.79	8.78	6.24	9.4
2	9.74	7.8	8.45	7.99	8.17	6.19	9.1
2.5	9.65	7.58	7.7	7.48	6.76	6.17	8.8
3	9.59	7.31	7.03	6.41	5.62	6.15	8.5
4	9.31	7.08	6.12	5.72	5.12	6.05	8.3
5	9.24	7.01	5.57	5.31	4.4	6	8.1
6	9.03	6.73	4.81	4.3	3.1	5.91	7.9
7	9.01	6.49	4.17	3.4	2.5	5.88	7.6
8	8.9	6.45	3.45	3.32	1.9	5.85	7.3
9	8.9				1.77	5.87	7.1
10	8.6					5.77	

Table 1.11. Mile Marker 6 (Transition) Temperature (°C) measures over study period (2022)

Depth:	29-Apr	31-May	29-Jun	28-Jul	29-Aug	26-Sep	28-Oct
0	16.8	22.9	25.5	26.7	27.6	22.7	17.7
0.5	15.8	21.8	25.4	26.3	26.8	22.7	17.7
1	15.6	19.6	24.9	25.9	26.7	22.5	17.7
1.5	15.1	19.2	24.6	25.8	26.5	22.4	17.5
2	14.9	17.9	22.9	25.1	26.3	22.3	17.4
2.5	14.8	17.7	22.9	25.1	25.5	22.3	17.3
3	14.7	16.9	21.9	24.5	25.3	22.3	17.2
4	14.5	16.6	21.5	24.1	24.6	22.1	17.2
5	14.5	16.1	20.8	23.5	24.3	22.1	17.1
6	14.4	15.3	20.1	22.7	23.9	22.1	17
7	14.4	14.6	19.7	21.7	23.8	22	16.9
8	14.3	14.6	19.1	21.5	23.5	22	16.8
9	14.3				23.5	21.9	16.7
10	14.2					21.9	

Table 1.12. Mile Marker 6 (Transition) Chlorophyll a (ppb) concentrations over study period (2022)

Depth:	29-Apr	31-May	29-Jun	28-Jul	29-Aug	28-Sep	26-Oct
0	2.78	8.1	3.6	6.9	9.5	6.6	15.9
0.5	4.7	9.13	5.7	8.6	11.8	12.1	21.3
1	7.3	20.5	7.3	18.7	18.3	14.8	20.2
1.5	7.7	22.2	13.4	19.8	17.2	12.8	20.2
2	9.4	10.4	13.4	15.2	16.7	12.5	21.6
2.5	8	9.5	11.7	9.2	13.8	14.9	19.1
3	8.36	5.6	9.1	8.3	10.1	13.3	20
4	8.6	4.9	6.9	7.1	7.9	10.1	16.1
5	7.2	4.6	5.7	6	7.1	9.5	12.1
6	6.5	3.6	4.7	4.7	6.5	11	12.8
7	8.6	2.6	4.4	4.8	5.9	9.1	12.4
8	6.9	2.6	4.7	4.9	5	9.6	14.8
9	5.7				5.8	7.3	17.5
10	5.8					7.9	

Table 1.13. Mile Marker 6 (Transition) pH measures over study period (2022)

Depth:	29-Apr	31-May	29-Jun	28-Jul	29-Aug	28-Sep	26-Oct
0	7.49	7.95	7.9	8.43	8.14	7.45	7.8
0.5	7.76	7.99	7.94	8.45	8.06	7.45	7.8
1	7.75	7.77	7.9	8.34	7.98	7.44	7.8
1.5	7.67	7.58	7.86	8.17	7.88	7.43	7.77
2	7.66	7.36	7.66	7.91	7.68	7.41	7.7
2.5	7.63	7.27	7.48	7.65	7.51	7.4	7.6
3	7.62	7.18	7.3	7.45	7.29	7.39	7.6
4	7.57	7.16	7.24	7.28	7.12	7.38	7.6
5	7.55	7.13	7.14	7.16	7.01	7.36	7.5
6	7.52	7.11	7.07	7.06	6.9	7.35	7.5
7	7.52	7.08	7	6.96	6.8	7.34	7.4
8	7.51	7.07	6.94	6.89	6.8	7.33	7.4
9	7.5				6.7	7.32	7.4
10	7.4					7.31	

Table 1.14. Mile Marker 6 (Transition) ORP (mV) measures over study period (2022)

Depth:	29-Apr	31-May	29-Jun	28-Jul	29-Aug	28-Sep	26-Oct
0	387	414	406	363	394	382	387
0.5	394	414	407	365	393	383	387
1	408	417	409	370	394	384	388
1.5	411	421	411	377	394	385	389
2	417	422	413	384	396	386	390
2.5	419	423	414	389	396	387	390
3	423	424	415	392	399	387	391
4	424	425	416	391	399	388	391
5	427	426	416	398	400	389	392
6	428	427	417	401	402	390	393
7	430	428	418	403	402	391	393
8	430	428	418	404	402	392	394
9	432				400	392	387
10	433					393	

Table 1.15. Mile Marker 6 (Transition) Turbidity (NTU) measures over study period (2022)

Depth:	29-Apr	31-May	29-Jun	28-Jul	29-Aug	28-Sep	26-Oct
0	3.1	8.5	1.7	2.1	2.3	4.3	2.3
0.5	3.7	8.9	2.2	2.2	3	4.5	2.3
1	3.6	16.9	2.2	2.9	2.8	4.4	2.2
1.5	3.9	16.8	3	3.1	3.2	4.2	2.2
2	4.1	19.6	3.6	3.6	3.3	1.9	2.5
2.5	4.6	18.3	4.3	3.7	3.4	4.8	2.8
3	5.2	16	4.4	4.4	4	4	2.8
4	5.5	17.6	4.6	5.2	4.5	3.6	2.7
5	5.6	16.3	4.4	5.4	4.9	3.7	3
6	5.6	14.1	4.7	4.9	4.3	3.9	3.3
7	5.7	13.2	5.5	10.5	5.3	4.7	4.6
8	5.5	15.6	13.4	13.7	7.6	5	7.6
9	6.1				13.4	5.4	31.5
10	7.8					11.7	

Toler Bridge

Table 1.16. Toler Bridge (Riverine) Conductivity ($\mu\text{S}/\text{cm}$) measures over study period (2022)

Depth:	29-Apr	31-May	29-Jun	28-Jul	29-Aug	28-Sept	26-Oct
0	0.172	0.162	0.183	0.152	0.177	0.186	0.183
0.5	0.174	0.164	0.182	0.155	0.179	0.184	0.183
1	0.174	0.166	0.183	0.172	0.179	0.184	0.183
1.5	0.174	0.165	0.183	0.178	0.179	0.184	0.182
2	0.174	0.166	0.182	0.178	0.179	0.184	0.182
2.5	0.174	0.166	0.181	0.177	0.179	0.184	0.182
3	0.174	0.165	0.18	0.177	0.179	0.184	0.182
4	0.174	0.165	0.181	0.178	0.179	0.184	0.181
5	0.176			0.177	0.179	0.183	0.178

Table 1.17. Toler Bridge (Riverine) Dissolved Oxygen (mg/L) measures over study period (2022)

Depth:	29-Apr	31-May	29-Jun	28-Jul	29-Aug	28-Sept	26-Oct
--------	--------	--------	--------	--------	--------	---------	--------

0	9.68	7.62	8.49	7	5.85	5.41	7.6
0.5	9.5	7.6	8.3	7.06	5.65	5.1	7.5
1	9.53	7.5	8.21	7	5.56	4.92	7.4
1.5	9.49	7.5	8.27	6.97	5.4	4.87	7.2
2	9.43	7.5	8.21	6.79	5.3	4.83	7.2
2.5	9.43	7.5	7.97	6.62	5.15	4.84	7.2
3	9.42	7.5	7.58	6.5	5.1	4.82	7.2
4	9.31	7.56	7.37	6.33	5	4.79	7.2
5	9.24			6.3	4.9	4.78	7.2

Table 1.18. Toler Bridge (Riverine) Temperature (°C) measures over study period (2022)

Depth:	29-Apr	31-May	29-Jun	28-Jul	29-Aug	28-Sept	26-Oct
0	14.2	17	23.9	24.7	24.4	21.2	18.1
0.5	13.9	16.5	23.5	24.3	23.7	21.2	17.8
1	13.7	16.2	23	23.4	23.4	20.7	17.7
1.5	13.5	16.16	23.1	23.1	23.2	20.5	17.7
2	13.5	16	22.9	23	23.2	20.5	17.6
2.5	13.4	16	22.6	22.9	23	20.5	17.6
3	13.4	16	21.6	22.8	23	20.5	17.6
4	13.3	16	21.5	22.7	22.9	20.4	17.6
5	13			22.7	22.8	20.43	17.5

Table 1.19. Toler Bridge (Riverine) Chlorophyll a (ppb) concentrations over study period (2022)

Depth:	29-Apr	31-May	29-Jun	28-Jul	29-Aug	28-Sept	26-Oct
0	2.58	2.1	4.6	11.2	4.2	2.1	5.6
0.5	4.3	2.01	4.8	10.5	7.1	3.6	4.5
1	5.6	2.3	7.9	8.8	7.4	3.9	3.8
1.5	5.4	3.2	7.9	8.7	6.9	4.2	3.5
2	5.14	3.5	8.2	7.3	6.1	4	3.8
2.5	5.1	3.66	9.1	6.9	6.1	3.8	3
3	5.4	3.75	7.3	6.7	6	3.7	2.8
4	4.5	3.93	6.64	6.2	5.8	3.6	3
5	5.6			4.9	5.3	3.55	3.3

Table 1.20. Toler Bridge (Riverine) pH measures over study period (2022)

Depth:	29-Apr	31-May	29-Jun	28-Jul	29-Aug	28-Sept	26-Oct
0	7.61	7.35	7.52	7.51	7.24	7.23	7.4
0.5	7.6	7.27	7.46	7.33	7.09	7.25	7.4
1	7.5	7.24	7.42	7.22	7.03	7.2	7.4
1.5	7.59	7.24	7.4	7.16	6.9	7.21	7.4
2	7.59	7.23	7.3	7.14	6.9	7.2	7.4
2.5	7.59	7.23	7.36	7.1	6.9	7.1	7.4
3	7.6	7.23	7.32	7.11	6.9	7.18	7.3
4	7.59	7.23	7.27	7.08	6.9	7.18	7.3
5	7.58			7.07	6.9	7.18	7.3

Table 1.21. Toler Bridge (Riverine) ORP (mV) measures over study period (2022)

Depth:	29-Apr	31-May	29-Jun	28-Jul	29-Aug	28-Sept	26-Oct
0	315	418	384	381	368	391	394
0.5	331	418	386	384	369	393	394
1	356	417	387	386	371	394	395
1.5	363	417	389	387	371	395	395
2	376	417	391	389	373	395	396
2.5	380	417	392	390	374	397	396
3	390	417	393	391	375	398	396
4	393	417	394	392	376	398	396
5	400			394	377	399	397

Table 1.22. Toler Bridge (Riverine) Turbidity (NTU) measures over study period (2022)

Depth:	29-Apr	31-May	29-Jun	28-Jul	29-Aug	28-Sept	26-Oct
0	2.7	7.7	3.8	6.3	4.4	2.1	2.5
0.5	2.5	7.7	3.8	5.6	4.3	1.5	2.1
1	2.8	7.9	3.9	4.7	4.3	1.4	2
1.5	2.5	8.3	4.5	3.3	4	1.7	2.1
2	2	8.6	4.8	3.7	4.2	1.5	2.4
2.5	2.1	13.7	4.3	3.7	4	2.1	2.4
3	2.2	9.6	4.7	3.8	3.9	2.4	2.6
4	1.9	9	5.1	3.6	4.3	2.4	2.3
5	2.3			4.1	3.9	2.3	2.9

